

For Research Use Only

MTX2 Polyclonal antibody

Catalog Number: 11610-1-AP

Featured Product

7 Publications



Basic Information

Catalog Number:

11610-1-AP

Size:

350 µg/ml

Source:

Rabbit

Isotype:

IgG

Immunogen Catalog Number:

AG2181

GenBank Accession Number:

BC017271

GeneID (NCBI):

10651

UNIPROT ID:

O75431

Full Name:

metaxin 2

Calculated MW:

263 aa, 30 kDa

Observed MW:

25-29 kDa

Purification Method:

Antigen affinity purification

Recommended Dilutions:

WB 1:500-1:1000

IP 0.5-4.0 µg for 1.0-3.0 mg of total protein lysate

IHC 1:50-1:500

IF 1:10-1:100

Applications

Tested Applications:

IF/ICC, IHC, IP, WB, ELISA

Cited Applications:

WB, IF, IHC

Species Specificity:

human, mouse, rat

Cited Species:

human, mouse

Note-IHC: suggested antigen retrieval with **TE buffer pH 9.0; (*) Alternatively, antigen retrieval may be performed with citrate buffer pH 6.0**

Positive Controls:

WB: mouse heart tissue, mouse kidney tissue, rat heart tissue

IP: mouse heart tissue,

IHC: human gliomas tissue,

IF: HepG2 cells,

Background Information

Notable Publications

Author	Pubmed ID	Journal	Application
Bo Zhang	32917887	Cell Death Dis	WB
Chuanxin Zhang	36242049	J Ovarian Res	IF
Li Chen	35313046	Hepatology	WB

Storage

Storage:

Store at -20°C. Stable for one year after shipment.

Storage Buffer:

PBS with 0.02% sodium azide and 50% glycerol pH 7.3.

Aliquoting is unnecessary for -20°C storage

For technical support and original validation data for this product please contact:

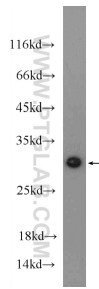
T: 4006900926

E: Proteintech-CN@ptglab.com

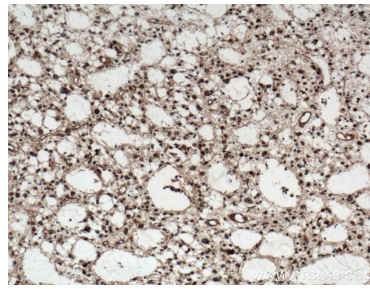
W: ptgcn.com

This product is exclusively available under Proteintech Group brand and is not available to purchase from any other manufacturer.

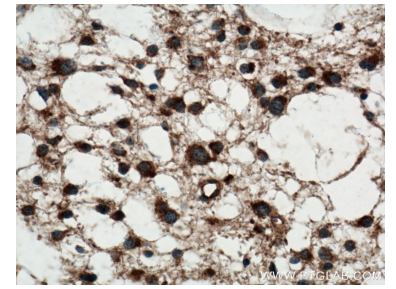
Selected Validation Data



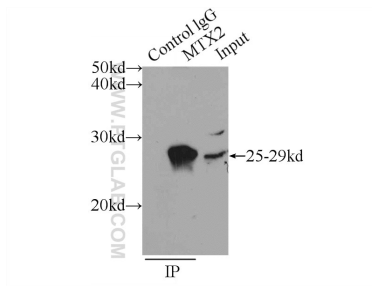
mouse heart tissue were subjected to SDS PAGE followed by western blot with 11610-1-AP (MTX2 Antibody) at dilution of 1:600 incubated at 4 degree celsius over night.



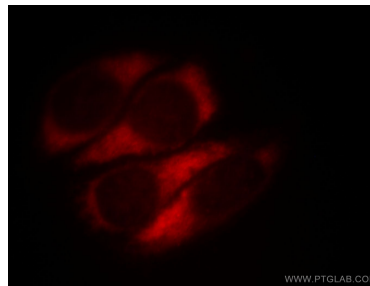
Immunohistochemical analysis of paraffin-embedded human gliomas tissue slide using 11610-1-AP (MTX2 antibody) at dilution of 1:100 (under 10x lens. Heat mediated antigen retrieval with Tris-EDTA buffer (pH 9.0).



Immunohistochemical analysis of paraffin-embedded human gliomas tissue slide using 11610-1-AP (MTX2 antibody) at dilution of 1:100 (under 40x lens. Heat mediated antigen retrieval with Tris-EDTA buffer (pH 9.0).



IP result of anti-MTX2 (IP:11610-1-AP, 3ug; Detection:11610-1-AP 1:300) with mouse heart tissue lysate 4000ug.



Immunofluorescent analysis of HepG2 cells, using MTX2 antibody 11610-1-AP at 1:25 dilution and Rhodamine-labeled goat anti-rabbit IgG (red).