

For Research Use Only

Cyclophilin B Polyclonal antibody

Catalog Number: 11607-1-AP

Featured Product

16 Publications



Basic Information

Catalog Number:

11607-1-AP

Size:

650 ug/ml

Source:

Rabbit

Isotype:

IgG

Immunogen Catalog Number:

AG2161

GenBank Accession Number:

BC032138

GeneID (NCBI):

5479

UNIPROT ID:

P23284

Full Name:

peptidylprolyl isomerase B
(cyclophilin B)

Calculated MW:

216 aa, 24 kDa

Observed MW:

19-24 kDa

Purification Method:

Antigen affinity purification

Recommended Dilutions:

WB 1:1000-1:6000

IHC 1:300-1:1200

IF/ICC 1:20-1:200

Applications

Tested Applications:

WB, IHC, IF/ICC, ELISA

Cited Applications:

WB, IHC, IF

Species Specificity:

human, mouse, rat

Cited Species:

human, mouse, rat, monkey

Note-IHC: suggested antigen retrieval with TE buffer pH 9.0; (*) Alternatively, antigen retrieval may be performed with citrate buffer pH 6.0

Positive Controls:

WB: HeLa cells, U-937 cells, Raji cells, HepG2 cells, mouse liver tissue, NIH/3T3 cells, Jurkat cells, RAW 264.7 cells, rat liver tissue

IHC: human normal colon, human liver cancer tissue, human lymphoma tissue, human pancreas cancer tissue

IF/ICC: HeLa cells,

Background Information

PPIB, also named as CYPB, SCYLP, PPIase B and CYP-S1, belongs to the cyclophilin-type PPIase family and PPIase B subfamily. PPIases accelerate the folding of proteins. It catalyzes the cis-trans isomerization of proline imidic peptide bonds in oligopeptides. PPIB is secreted in biological fluids such as blood or milk and binds to a specific receptor present on the human lymphoblastic cell line Jurkat and on human peripheral blood lymphocytes. The full-length of PPIB has 216aa (24 kDa), and a 33aa-signal peptide could be removed in the mature form (about 19 kDa).

Notable Publications

Author	Pubmed ID	Journal	Application
Pei-Hsuan Chen	31564558	Mol Cell	WB
Yue Fei F	21136946	Proteomics Clin Appl	WB, IHC
Roberta Besio	31171565	Dis Model Mech	

Storage

Storage:

Store at -20°C. Stable for one year after shipment.

Storage Buffer:

PBS with 0.02% sodium azide and 50% glycerol pH 7.3.

Aliquoting is unnecessary for -20°C storage

For technical support and original validation data for this product please contact:

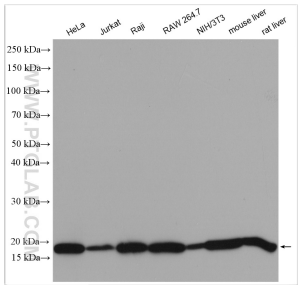
T: 4006900926

E: Proteintech-CN@ptglab.com

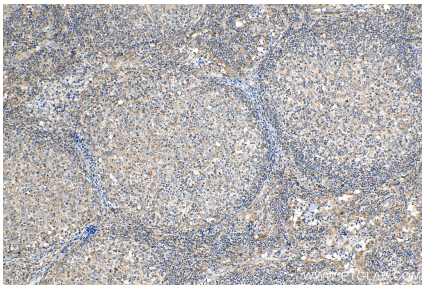
W: ptgcn.com

This product is exclusively available under Proteintech Group brand and is not available to purchase from any other manufacturer.

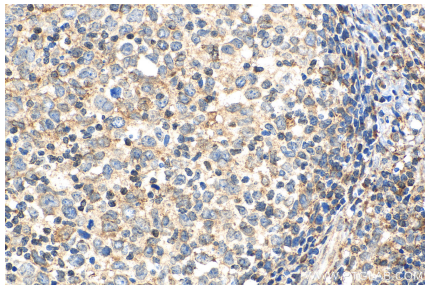
Selected Validation Data



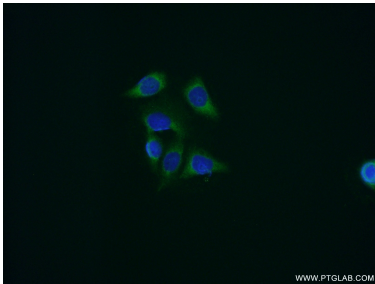
HeLa cells were subjected to SDS PAGE followed by western blot with 11607-1-AP (Cyclophilin B antibody) at dilution of 1:3000 incubated at room temperature for 1.5 hours.



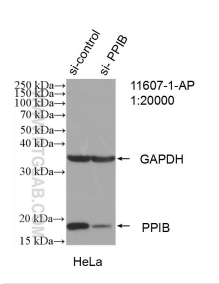
Immunohistochemical analysis of paraffin-embedded human lymphoma tissue slide using 11607-1-AP (Cyclophilin B antibody) at dilution of 1:200 (under 10x lens). Heat mediated antigen retrieval with Tris-EDTA buffer (pH 9.0).



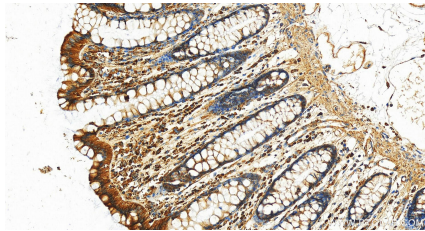
Immunohistochemical analysis of paraffin-embedded human lymphoma tissue slide using 11607-1-AP (Cyclophilin B antibody) at dilution of 1:200 (under 40x lens). Heat mediated antigen retrieval with Tris-EDTA buffer (pH 9.0).



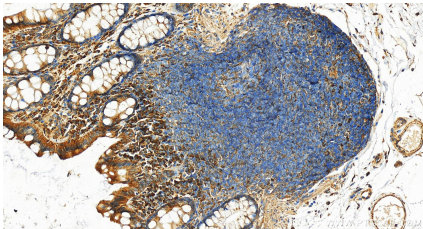
Immunofluorescent analysis of HeLa cells using 11607-1-AP (Cyclophilin B antibody) at dilution of 1:50 and Alexa Fluor 488-conjugated Goat Anti-Rabbit IgG(H+L).



WB result of Cyclophilin B antibody (11607-1-AP; 1:20000; incubated at room temperature for 1.5 hours) with sh-Control and sh-Cyclophilin B transfected HeLa cells.



Immunohistochemical analysis of paraffin-embedded human normal colon slide using 11607-1-AP (Cyclophilin B antibody) at dilution of 1:600 (under 20x lens). Heat mediated antigen retrieval with Tris-EDTA buffer (pH 9.0).



Immunohistochemical analysis of paraffin-embedded human normal colon slide using 11607-1-AP (Cyclophilin B antibody) at dilution of 1:600 (under 20x lens). Heat mediated antigen retrieval with Tris-EDTA buffer (pH 9.0).