

For Research Use Only

C1QA Polyclonal antibody, PBS Only

Catalog Number: 11602-1-PBS



Basic Information

Catalog Number:

11602-1-PBS

Concentration:

1 mg/ml

Source:

Rabbit

Isotype:

IgG

Immunogen Catalog Number:

AG2141

GenBank Accession Number:

BC030153

GeneID (NCBI):

712

UNIPROT ID:

P02745

Full Name:

complement component 1, q
subcomponent, A chain

Calculated MW:

245 aa, 26 kDa

Observed MW:

26-30 kDa

Purification Method:

Antigen affinity purification

Applications

Tested Applications:

WB, IF/ICC, Indirect ELISA

Species Specificity:

human

Background Information

The first component of complement, C1, is a calcium-dependent complex of the 3 subcomponents C1q, C1r, and C1s. C1q is composed of 18 polypeptide chains: six A-chains, six B-chains, and six C-chains. Each chain contains a collagen-like region located near the N terminus and a C-terminal globular region. Deficiency of C1q has been associated with lupus erythematosus and glomerulonephritis. This antibody is raised against C1qA which is the A-chain polypeptide of human complement subcomponent C1q.

Storage

Storage:

Store at -80°C.

The product is shipped with ice packs. Upon receipt, store it immediately at -80°C

Storage Buffer:

PBS only, pH7.3

For technical support and original validation data for this product please contact:

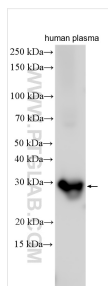
T: 4006900926

E: Proteintech-CN@ptglab.com

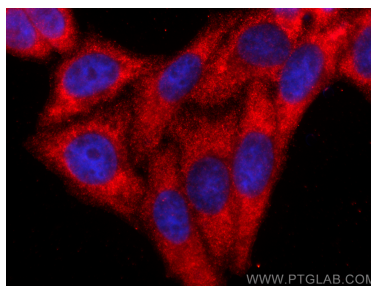
W: ptgcn.com

This product is exclusively available under Proteintech Group brand and is not available to purchase from any other manufacturer.

Selected Validation Data



human plasma was subjected to SDS PAGE followed by western blot with 11602-1-AP (C1qA antibody) at dilution of 1:4000 incubated at room temperature for 1.5 hours. This data was developed using the same antibody clone with 11602-1-PBS in a different storage buffer formulation.



Immunofluorescent analysis of (-20°C Ethanol) fixed HepG2 cells using C1QA antibody (11602-1-AP) at dilution of 1:200 and CoraLite® 594-Conjugated Goat Anti-Rabbit IgG(H+L) (SA00013-4). This data was developed using the same antibody clone with 11602-1-PBS in a different storage buffer formulation.