

For Research Use Only

# IGF2BP2 Polyclonal antibody

Catalog Number: 11601-1-AP

Featured Product

191 Publications



## Basic Information

### Catalog Number:

11601-1-AP

### Source:

Rabbit

### Isotype:

IgG

### Immunogen Catalog Number:

AG2142

### GenBank Accession Number:

BC021290

### GeneID (NCBI):

10644

### UNIPROT ID:

Q9Y6M1

### Full Name:

insulin-like growth factor 2 mRNA binding protein 2

### Calculated MW:

65 kDa

### Observed MW:

55-65 kDa

### Purification Method:

Antigen affinity purification

### Recommended Dilutions:

WB: 1:2000-1:16000

IP: 0.5-4.0 ug for 1.0-3.0 mg of total protein lysate

IHC: 1:50-1:500

## Applications

### Tested Applications:

WB, IHC, IP, ELISA

### Cited Applications:

WB, IHC, IF, IP, CoIP, RIP

### Species Specificity:

human, mouse, rat

### Cited Species:

human, mouse, rat, pig

**Note-IHC: suggested antigen retrieval with TE buffer pH 9.0; (\*) Alternatively, antigen retrieval may be performed with citrate buffer pH 6.0**

### Positive Controls:

**WB** : HeLa cells, HepG2 cells, mouse kidney tissue, rat kidney tissue, human kidney tissue, human heart tissue, COLO 320 cells

**IP** : HEK-293 cells,

**IHC** : human pancreas cancer tissue, human breast cancer tissue, human colon cancer tissue, mouse stomach tissue, mouse brain tissue

## Background Information

Insulin-like growth factor 2 mRNA-binding protein 2 (IGF2BP2), is a member of a family of mRNA binding protein, which can bind to several mammalian cells' mRNAs. Thus it may involve in the regulation of translation of mRNA. IGF2BP2's polymorphisms is risk factor for developing type 2 diabetes. This antibody raise against part of N-terminus of human IGF2BP2. IGF2BP2 has some isoforms with the MW of 54-66 kDa. Some literature has reported that multiple bands can be detected (PMID: 22427968, 36322753, 23069990).

## Notable Publications

Author	Pubmed ID	Journal	Application
Kusuma Suphakhong	36183833	J Biol Chem	WB
Yibo Bian	36230970	Cells	WB, RIP, IHC, IF
Miao Li	30247605	J Clin Endocrinol Metab	RIP

## Storage

### Storage:

Store at -20°C. Stable for one year after shipment.

### Storage Buffer:

PBS with 0.02% sodium azide and 50% glycerol, pH7.3

Aliquoting is unnecessary for -20°C storage

For technical support and original validation data for this product please contact:

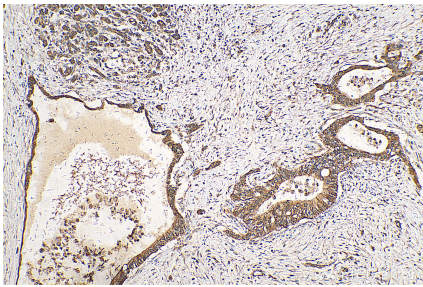
T: 4006900926

E: [Proteintech-CN@ptglab.com](mailto:Proteintech-CN@ptglab.com)

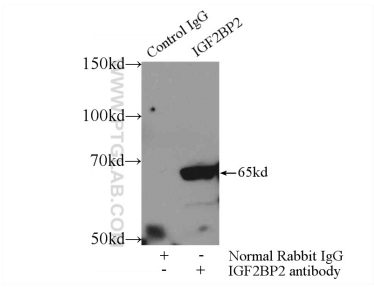
W: [ptgcn.com](http://ptgcn.com)

**This product is exclusively available under Proteintech Group brand and is not available to purchase from any other manufacturer.**

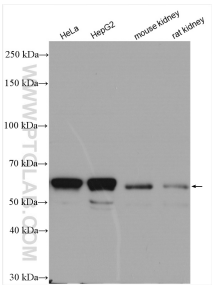
Selected Validation Data



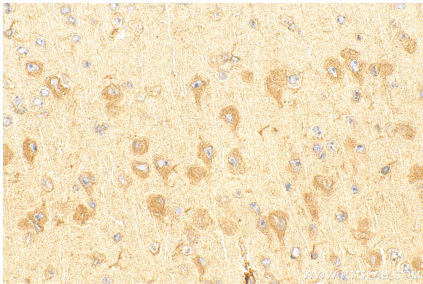
Immunohistochemical analysis of paraffin-embedded human pancreas cancer tissue slide using 11601-1-AP (IGF2BP2 antibody) at dilution of 1:200 (under 10x lens). Heat mediated antigen retrieval with Tris-EDTA buffer (pH 9.0).



IP result of anti-IGF2BP2 (IP:11601-1-AP, 3ug; Detection:11601-1-AP 1:500) with HEK-293 cells lysate 1000ug.



Various lysates were subjected to SDS PAGE followed by western blot with 11601-1-AP (IGF2BP2 antibody) at dilution of 1:8000 incubated at room temperature for 1.5 hours.



Immunohistochemical analysis of paraffin-embedded mouse brain tissue slide using 11601-1-AP (IGF2BP2 antibody) at dilution of 1:500 (under 40x lens). Heat mediated antigen retrieval with Tris-EDTA buffer (pH 9.0).