

For Research Use Only

# IFI30 Polyclonal antibody

Catalog Number: 11597-1-AP

Featured Product

4 Publications



## Basic Information

### Catalog Number:

11597-1-AP

### Concentration:

450 µg/ml

### Source:

Rabbit

### Isotype:

IgG

### Immunogen Catalog Number:

AG2178

### GenBank Accession Number:

BC021136

### GeneID (NCBI):

10437

### UNIPROT ID:

P13284

### Full Name:

interferon, gamma-inducible protein 30

### Calculated MW:

261 aa, 29 kDa

### Observed MW:

29 kDa

### Purification Method:

Antigen affinity purification

### Recommended Dilutions:

WB 1:2000-1:12000

IP 0.5-4.0 µg for 1.0-3.0 mg of total protein lysate

IHC 1:2000-1:8000

IF/ICC 1:50-1:500

## Applications

### Tested Applications:

WB, IHC, IF/ICC, IP, ELISA

### Cited Applications:

WB, IHC

### Species Specificity:

human

### Cited Species:

human

**Note-IHC: suggested antigen retrieval with TE buffer pH 9.0; (\*) Alternatively, antigen retrieval may be performed with citrate buffer pH 6.0**

### Positive Controls:

WB : COLO 320 cells,

IP : COLO 320 cells,

IHC : human liver cancer tissue,

IF/ICC : HeLa cells,

## Background Information

IFI30(interferon, gamma-inducible protein 30) is also named as IP30, GILT, IFI-30, MGC32056, IFI30 and belongs to the GILT family. It can facilitate the processing and presentation to antigen-specific T cells of protein antigens containing disulfide bonds. IFI30 is inducibly up-regulated by IFN-γ, as are MHC class II molecules, the associated invariant chain, and HLA-DM, which catalyses peptide loading in MHCs and the 35 kDa species is the IFI30 proform, and the 30-kDa species is the mature form(PMID:10639150). It can exist as a dimer(PMID:17142755).

## Notable Publications

Author	Pubmed ID	Journal	Application
Yan Fan	34400904	Int J Med Sci	WB,IHC
Wu Xu	39936439	Recent Pat Anticancer Drug Discov	IHC
Xiaoxu Chen	38517387	Aging (Albany NY)	WB

## Storage

### Storage:

Store at -20°C. Stable for one year after shipment.

### Storage Buffer:

PBS with 0.02% sodium azide and 50% glycerol, pH7.3

Aliquoting is unnecessary for -20°C storage

For technical support and original validation data for this product please contact:

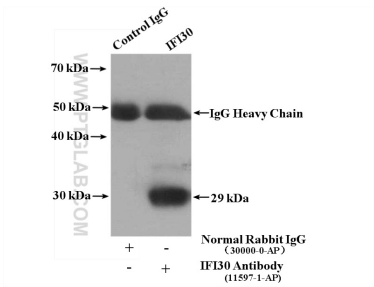
T: 4006900926

E: Proteintech-CN@ptglab.com

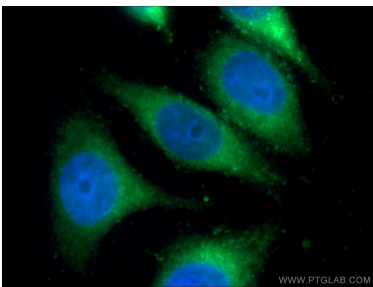
W: ptgcn.com

**This product is exclusively available under Proteintech Group brand and is not available to purchase from any other manufacturer.**

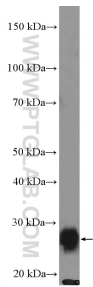
Selected Validation Data



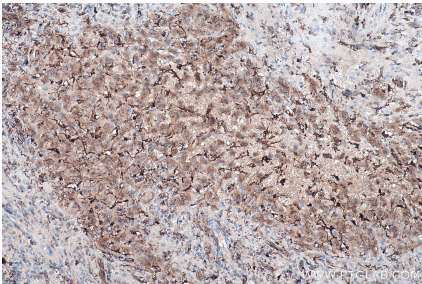
IP result of anti-IFI30 (IP:11597-1-AP, 4ug; Detection:11597-1-AP 1:3000) with COLO 320 cells lysate 2400 ug.



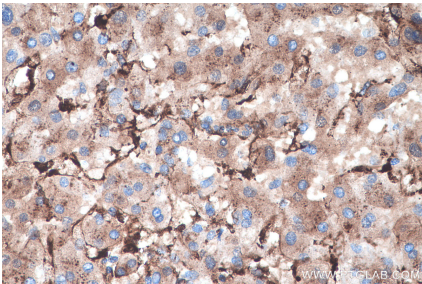
Immunofluorescent analysis of (-20°C Ethanol) fixed HeLa cells using 11597-1-AP (IFI30 antibody) at dilution of 1:100 and Alexa Fluor 488-conjugated Goat Anti-Rabbit IgG(H+L).



COLO 320 cells were subjected to SDS PAGE followed by western blot with 11597-1-AP (IFI30 Antibody) at dilution of 1:6000 incubated at 4 degree celsius over night.



Immunohistochemical analysis of paraffin-embedded human liver cancer tissue slide using 11597-1-AP (IFI30 antibody) at dilution of 1:4000 (under 10x lens). Heat mediated antigen retrieval with Tris-EDTA buffer (pH 9.0).



Immunohistochemical analysis of paraffin-embedded human liver cancer tissue slide using 11597-1-AP (IFI30 antibody) at dilution of 1:4000 (under 40x lens). Heat mediated antigen retrieval with Tris-EDTA buffer (pH 9.0).