

# TFIIE Beta Polyclonal antibody

Catalog Number: 11596-1-AP

2 Publications

## Basic Information

## Catalog Number:

11596-1-AP

## Size:

650 µg/ml

## Source:

Rabbit

## Isotype:

IgG

## Immunogen Catalog Number:

AG2136

## GenBank Accession Number:

BC030572

## GeneID (NCBI):

2961

## UNIPROT ID:

P29084

## Full Name:

general transcription factor IIE,  
polypeptide 2, beta 34kDa

## Calculated MW:

291 aa, 33 kDa

## Observed MW:

34 kDa

## Purification Method:

Antigen affinity purification

## Recommended Dilutions:

WB 1:1000-1:6000

IF/ICC 1:200-1:800

## Applications

## Tested Applications:

WB, IF/ICC, ELISA

## Cited Applications:

WB

## Species Specificity:

human, mouse, rat

## Cited Species:

human, mouse

## Positive Controls:

WB : K-562 cells, A375 cells, Jurkat cells

IF/ICC : A375 cells,

## Background Information

The general transcription factor IIE (TFIIE) is an essential component of the eukaryotic RNA polymerase II initiation complex, which plays pivotal roles in initiation of protein-coding gene transcription (PMID: 7829083). Transcription initiation factor IIE comprises two subunits, TFIIE-alpha and TFIIE-beta, two chains of which together form a tetramer. TFIIE-beta is encoded by GTF2E2 gene and contains TFIIE beta-DNA binding domain. It mainly functions to recruit TFIIH to the initiation complex and stimulate RNA polymerase II kinase activity (PMID: 10792464).

## Notable Publications

Author	Pubmed ID	Journal	Application
Xiaolong Qiao	37845349	Cancer Gene Ther	WB
De Cegli Rossella R	23180766	Nucleic Acids Res	WB

## Storage

## Storage:

Store at -20°C. Stable for one year after shipment.

## Storage Buffer:

PBS with 0.02% sodium azide and 50% glycerol pH 7.3.

Aliquoting is unnecessary for -20°C storage

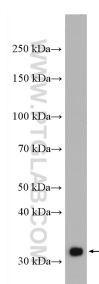
For technical support and original validation data for this product please contact:

T: 4006900926

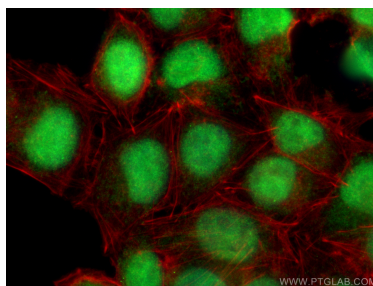
E: [Proteintech-CN@ptglab.com](mailto:Proteintech-CN@ptglab.com)W: [ptgcn.com](http://ptgcn.com)

This product is exclusively available under Proteintech Group brand and is not available to purchase from any other manufacturer.

## Selected Validation Data



K-562 cells were subjected to SDS PAGE followed by western blot with 11596-1-AP (TFIIE beta antibody) at dilution of 1:3000 incubated at room temperature for 1.5 hours.



Immunofluorescent analysis of (4% PFA) fixed A375 cells using TFIIE Beta antibody (11596-1-AP) at dilution of 1:400 and CoraLite® 488-Conjugated AffiniPure Goat Anti-Rabbit IgG(H+L) (SA00013-2), CL594-Phalloidin (red).