

For Research Use Only

RABL2B Polyclonal antibody, PBS Only

Catalog Number: 11588-1-PBS

Featured Product



Basic Information

Catalog Number:

11588-1-PBS

Source:

Rabbit

Isotype:

IgG

Immunogen Catalog Number:

AG2189

GenBank Accession Number:

BC024281

GeneID (NCBI):

11158

UNIPROT ID:

Q9UNT1

Full Name:

RAB, member of RAS oncogene family-like 2B

Calculated MW:

229 aa, 26 kDa

Observed MW:

26 kDa

Purification Method:

Antigen affinity purification

Applications

Tested Applications:

WB, IHC, IP, Indirect ELISA

Species Specificity:

human, mouse

Background Information

Rab-like protein 2B (RABL2B) is a member of a poorly characterised clade of the RAS GTPase superfamily, which plays an essential role in male fertility, sperm intraflagellar transport and tail assembly (PMID: 28553998, PMID: 28138870). A preferential expression of RABL2B in human tissues and lymphoblastoid cell lines was detected which is most pronounced in brain and placenta (PMID: 20138207).

Storage

Storage:

Store at -80°C.

The product is shipped with ice packs. Upon receipt, store it immediately at -80°C

Storage Buffer:

PBS only, pH7.3

For technical support and original validation data for this product please contact:

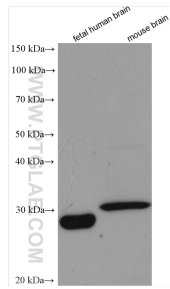
T: 4006900926

E: Proteintech-CN@ptglab.com

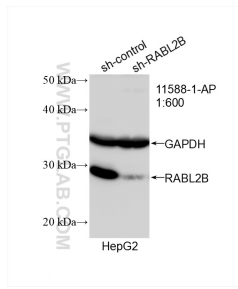
W: ptgcn.com

This product is exclusively available under Proteintech Group brand and is not available to purchase from any other manufacturer.

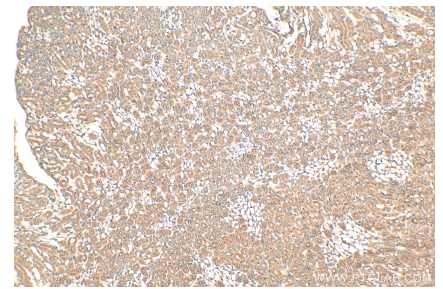
Selected Validation Data



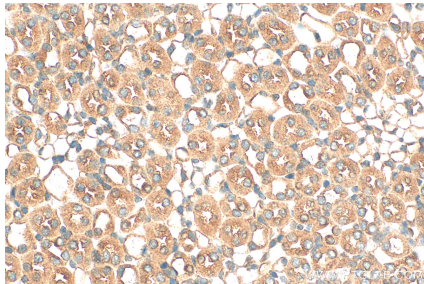
Various lysates were subjected to SDS PAGE followed by western blot with 11588-1-AP (RABL2B antibody) at dilution of 1:1500 incubated at room temperature for 1.5 hours. This data was developed using the same antibody clone with 11588-1-PBS in a different storage buffer formulation.



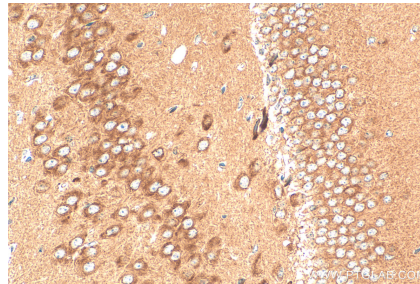
WB result of RABL2B antibody (11588-1-AP; 1:600; incubated at room temperature for 1.5 hours) with sh-Control and sh-RABL2B transfected HepG2 cells. This data was developed using the same antibody clone with 11588-1-PBS in a different storage buffer formulation.



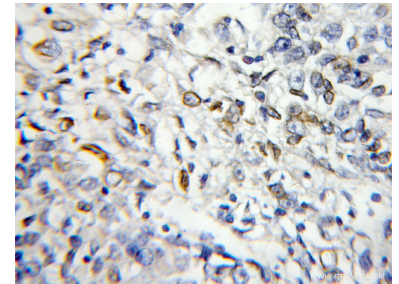
Immunohistochemical analysis of paraffin-embedded mouse kidney tissue slide using 11588-1-AP (RABL2B antibody) at dilution of 1:200 (under 10x lens). Heat mediated antigen retrieval with Tris-EDTA buffer (pH 9.0). This data was developed using the same antibody clone with 11588-1-PBS in a different storage buffer formulation.



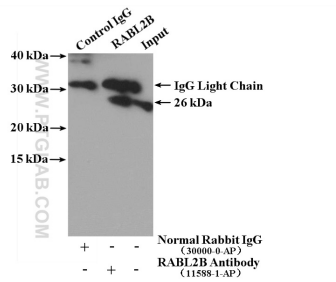
Immunohistochemical analysis of paraffin-embedded mouse kidney tissue slide using 11588-1-AP (RABL2B antibody) at dilution of 1:200 (under 40x lens). Heat mediated antigen retrieval with Tris-EDTA buffer (pH 9.0). This data was developed using the same antibody clone with 11588-1-PBS in a different storage buffer formulation.



Immunohistochemical analysis of paraffin-embedded mouse brain tissue slide using 11588-1-AP (RABL2B antibody) at dilution of 1:200 (under 40x lens). Heat mediated antigen retrieval with Tris-EDTA buffer (pH 9.0). This data was developed using the same antibody clone with 11588-1-PBS in a different storage buffer formulation.



Immunohistochemical analysis of paraffin-embedded human lung cancer using 11588-1-AP (RABL2B antibody) at dilution of 1:50 (under 10x lens). This data was developed using the same antibody clone with 11588-1-PBS in a different storage buffer formulation.



IP result of anti-RABL2B (IP:11588-1-AP, 4ug; Detection:11588-1-AP 1:300) with fetal human brain tissue lysate 4000 ug. This data was developed using the same antibody clone with 11588-1-PBS in a different storage buffer formulation.