

For Research Use Only

RABL2B Polyclonal antibody

Catalog Number: 11588-1-AP

Featured Product

2 Publications



Basic Information

Catalog Number:

11588-1-AP

Concentration:

500 ug/ml

Source:

Rabbit

Isotype:

IgG

Immunogen Catalog Number:

AG2189

GenBank Accession Number:

BC024281

GeneID (NCBI):

11158

UNIPROT ID:

Q9UNT1

Full Name:

RAB, member of RAS oncogene family-like 2B

Calculated MW:

229 aa, 26 kDa

Observed MW:

26 kDa

Purification Method:

Antigen affinity purification

Recommended Dilutions:

WB 1:500-1:3000

IP 0.5-4.0 ug for 1.0-3.0 mg of total protein lysate

IHC 1:50-1:500

Applications

Tested Applications:

WB, IHC, IP, ELISA

Cited Applications:

WB, IF

Species Specificity:

human, mouse

Cited Species:

human

Note-IHC: suggested antigen retrieval with TE buffer pH 9.0; (*) Alternatively, antigen retrieval may be performed with citrate buffer pH 6.0

Positive Controls:

WB : fetal human brain tissue, HepG2 cells, human brain tissue, human heart tissue, human kidney tissue, human liver tissue, mouse brain tissue

IP : fetal human brain tissue,

IHC : mouse kidney tissue, human lung cancer tissue, mouse brain tissue

Background Information

Rab-like protein 2B (RABL2B) is a member of a poorly characterised clade of the RAS GTPase superfamily, which plays an essential role in male fertility, sperm intraflagellar transport and tail assembly (PMID: 28553998, PMID: 28138870). A preferential expression of RABL2B in human tissues and lymphoblastoid cell lines was detected which is most pronounced in brain and placenta (PMID: 20138207).

Notable Publications

Author	Pubmed ID	Journal	Application
Izumi Dateyama	30578315	J Cell Sci	WB, IF
Geralde Powell-Rodgers	39149385	bioRxiv	WB

Storage

Storage:

Store at -20°C. Stable for one year after shipment.

Storage Buffer:

PBS with 0.02% sodium azide and 50% glycerol, pH7.3

Aliquoting is unnecessary for -20°C storage

For technical support and original validation data for this product please contact:

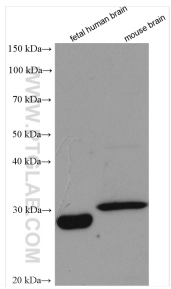
T: 4006900926

E: Proteintech-CN@ptglab.com

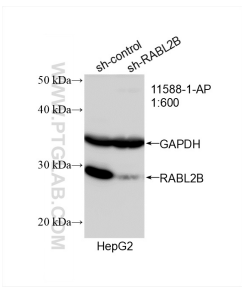
W: ptgcn.com

This product is exclusively available under Proteintech Group brand and is not available to purchase from any other manufacturer.

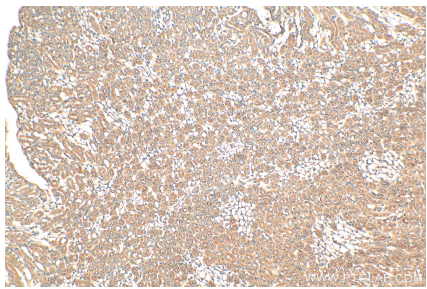
Selected Validation Data



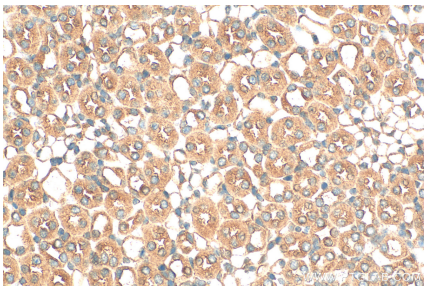
Various lysates were subjected to SDS PAGE followed by western blot with 11588-1-AP (RABL2B antibody) at dilution of 1:1500 incubated at room temperature for 1.5 hours.



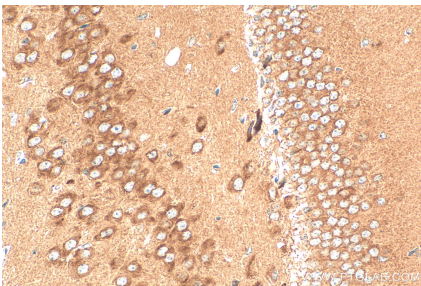
WB result of RABL2B antibody (11588-1-AP; 1:600; incubated at room temperature for 1.5 hours) with sh-Control and sh-RABL2B transfected HepG2 cells.



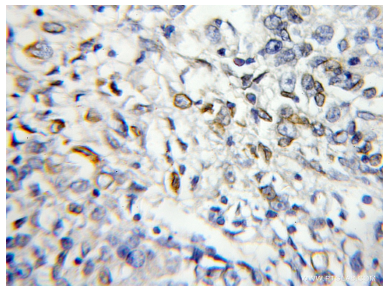
Immunohistochemical analysis of paraffin-embedded mouse kidney tissue slide using 11588-1-AP (RABL2B antibody) at dilution of 1:200 (under 10x lens). Heat mediated antigen retrieval with Tris-EDTA buffer (pH 9.0).



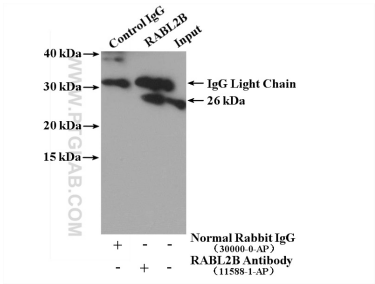
Immunohistochemical analysis of paraffin-embedded mouse kidney tissue slide using 11588-1-AP (RABL2B antibody) at dilution of 1:200 (under 40x lens). Heat mediated antigen retrieval with Tris-EDTA buffer (pH 9.0).



Immunohistochemical analysis of paraffin-embedded mouse brain tissue slide using 11588-1-AP (RABL2B antibody) at dilution of 1:200 (under 40x lens). Heat mediated antigen retrieval with Tris-EDTA buffer (pH 9.0).



Immunohistochemical analysis of paraffin-embedded human lung cancer using 11588-1-AP (RABL2B antibody) at dilution of 1:50 (under 10x lens).



IP result of anti-RABL2B (IP:11588-1-AP, 4ug; Detection:11588-1-AP 1:300) with fetal human brain tissue lysate 4000 ug.