

For Research Use Only

# PLSCR1 Polyclonal antibody

Catalog Number: 11582-1-AP

Featured Product

18 Publications



## Basic Information

### Catalog Number:

11582-1-AP

### Source:

Rabbit

### Isotype:

IgG

### Immunogen Catalog Number:

AG2172

### GenBank Accession Number:

BC021100

### GeneID (NCBI):

5359

### UNIPROT ID:

O15162

### Full Name:

phospholipid scramblase 1

### Calculated MW:

318 aa, 35 kDa

### Observed MW:

35 kDa

### Purification Method:

Antigen affinity purification

### Recommended Dilutions:

WB: 1:1000-1:8000

IP: 0.5-4.0 ug for 1.0-3.0 mg of total protein lysate

IHC: 1:50-1:500

IF-Fro: 1:50-1:500

IF/ICC: 1:20-1:200

## Applications

### Tested Applications:

WB, IHC, IF/ICC, IF-Fro, IP, ELISA

### Cited Applications:

WB, IHC, IF, IP

### Species Specificity:

human, mouse, rat

### Cited Species:

human, mouse

**Note-IHC: suggested antigen retrieval with TE buffer pH 9.0; (\*) Alternatively, antigen retrieval may be performed with citrate buffer pH 6.0**

### Positive Controls:

**WB:** HEK-293 cells, human skeletal muscle tissue, mouse skeletal muscle tissue, mouse lung tissue, A549 cells, HepG2 cells, human placenta tissue

**IP:** mouse lung tissue,

**IHC:** mouse spleen tissue, human kidney tissue, human pancreas cancer tissue

**IF-Fro:** rat brain tissue, mouse brain tissue

**IF/ICC:** HeLa cells,

## Background Information

PLSCR1 (Phospholipid scramblase 1) is a member of the family of membrane proteins that mediate the transbilayer movement of phospholipids ("scrambling") in a Ca<sup>2+</sup> dependent manner, which was identified as an a type II transmembrane protein involved in the calcium-dependent, nonspecific, rapid redistribution of phospholipids. A cysteine-rich palmitoylation motif [184CCCPCC189] of PLSCR1, a thioester linkage to the sulfhydryl groups of cysteines, controls the transportation of PLSCR1 to the cell membrane or nucleus (PMID: 32292520). PLSCR1 is strongly expressed in response to interferon (IFN) treatment and viral infection (PMID: 35138119, 23487022).

## Notable Publications

Author	Pubmed ID	Journal	Application
Luca Marchetti	34524684	Eur J Immunol	IF
Gong Qiaoling Q	21806988	FEBS Lett	WB
Wei-Chao Liao	34773335	Cancer Sci	WB,IP,IF

## Storage

### Storage:

Store at -20°C. Stable for one year after shipment.

### Storage Buffer:

PBS with 0.02% sodium azide and 50% glycerol, pH7.3

Aliquoting is unnecessary for -20°C storage

For technical support and original validation data for this product please contact:

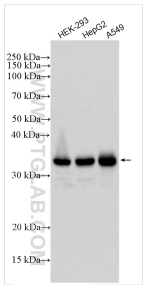
T: 4006900926

E: [Proteintech-CN@ptglab.com](mailto:Proteintech-CN@ptglab.com)

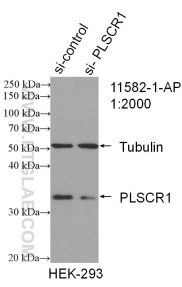
W: [ptgcn.com](http://ptgcn.com)

**This product is exclusively available under Proteintech Group brand and is not available to purchase from any other manufacturer.**

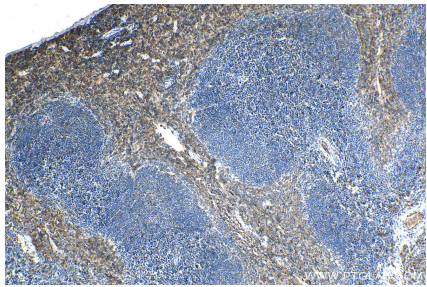
Selected Validation Data



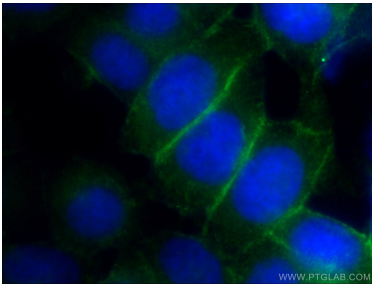
Various lysates were subjected to SDS PAGE followed by western blot with 11582-1-AP (PLSCR1 antibody) at dilution of 1:4000 incubated at room temperature for 1.5 hours.



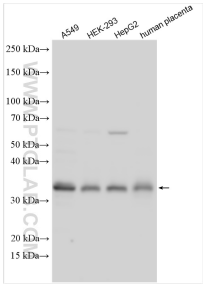
WB result of PLSCR1 antibody (11582-1-AP; 1:2000; incubated at room temperature for 1.5 hours) with sh-Control and sh-PLSCR1 transfected HEK-293 cells.



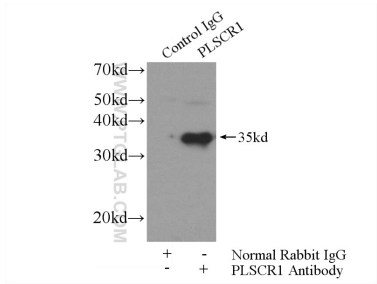
Immunohistochemical analysis of paraffin-embedded mouse spleen tissue slide using 11582-1-AP (PLSCR1 antibody) at dilution of 1:200 (under 10x lens). Heat mediated antigen retrieval with Tris-EDTA buffer (pH 9.0).



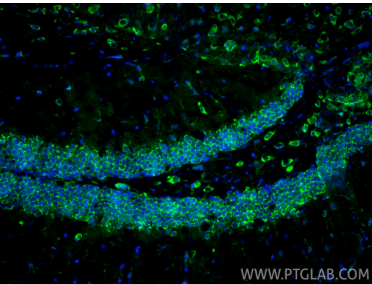
Immunofluorescent analysis of HeLa cells using 11582-1-AP (PLSCR1 antibody) at dilution of 1:50 and Alexa Fluor 488-conjugated AffiniPure Goat Anti-Rabbit IgG(H+L).



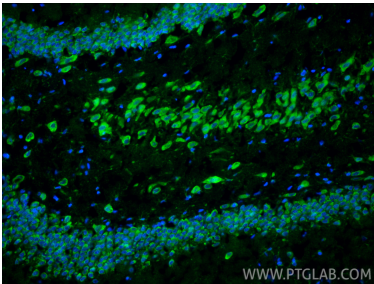
Various lysates were subjected to SDS PAGE followed by western blot with 11582-1-AP (PLSCR1 antibody) at dilution of 1:4000 incubated at room temperature for 1.5 hours.



IP result of anti-PLSCR1 (IP:11582-1-AP, 4ug; Detection:11582-1-AP 1:500) with mouse lung tissue lysate 2800ug.



Immunofluorescent analysis of (4% PFA) fixed frozen OCT-embedded mouse brain tissue using PLSCR1 antibody (11582-1-AP) at dilution of 1:200 and CoraLite®488-Conjugated Goat Anti-Rabbit IgG(H+L) (SA00013-2).



Immunofluorescent analysis of (4% PFA) fixed frozen OCT-embedded rat brain tissue using PLSCR1 antibody (11582-1-AP) at dilution of 1:200 and CoraLite®488-Conjugated Goat Anti-Rabbit IgG(H+L) (SA00013-2).