

For Research Use Only

# SCIN Polyclonal antibody

Catalog Number: 11579-1-AP

Featured Product

4 Publications



## Basic Information

**Catalog Number:**

11579-1-AP

**Size:**

350 µg/ml

**Source:**

Rabbit

**Isotype:**

IgG

**Immunogen Catalog Number:**

AG2168

**GenBank Accession Number:**

BC021090

**GeneID (NCBI):**

85477

**UNIPROT ID:**

Q9Y6U3

**Full Name:**

scinderin

**Calculated MW:**

715 aa, 81 kDa

**Observed MW:**

80 kDa

**Purification Method:**

Antigen affinity purification

**Recommended Dilutions:**

WB 1:500-1:2000

IP 0.5-4.0 µg for 1.0-3.0 mg of total protein lysate

IHC 1:20-1:200

IF 1:10-1:100

## Applications

**Tested Applications:**

IF/ICC, IHC, IP, WB, ELISA

**Cited Applications:**

WB, IF, IHC

**Species Specificity:**

human, mouse, rat

**Cited Species:**

human

**Note-IHC: suggested antigen retrieval with TE buffer pH 9.0; (\*) Alternatively, antigen retrieval may be performed with citrate buffer pH 6.0**

**Positive Controls:**

WB : human placenta tissue,

IP : human placenta tissue,

IHC : human pancreas cancer tissue,

IF : HepG2 cells,

## Background Information

### Notable Publications

Author	Pubmed ID	Journal	Application
Zsofia I. Laszlo	36309735	Acta Neuropathol Commun	WB
Xiaofeng Lai	29744289	FEBS Open Bio	WB,IF
Xin Lin	38292665	World J Clin Oncol	WB,IHC

## Storage

**Storage:**

Store at -20°C. Stable for one year after shipment.

**Storage Buffer:**

PBS with 0.02% sodium azide and 50% glycerol pH 7.3.

Aliquoting is unnecessary for -20°C storage

For technical support and original validation data for this product please contact:

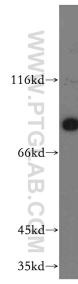
T: 4006900926

E: Proteintech-CN@ptglab.com

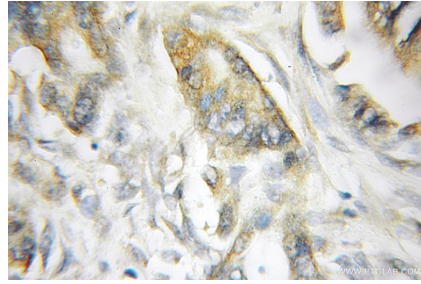
W: ptgcn.com

**This product is exclusively available under Proteintech Group brand and is not available to purchase from any other manufacturer.**

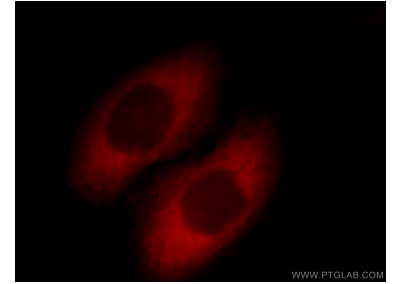
## Selected Validation Data



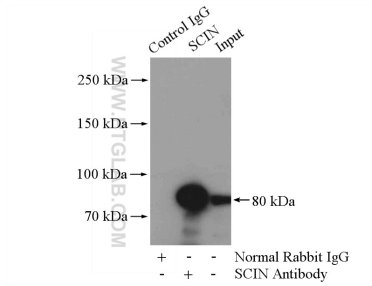
human placenta tissue were subjected to SDS PAGE followed by western blot with 11579-1-AP (SCIN antibody) at dilution of 1:300 incubated at room temperature for 1.5 hours.



Immunohistochemical analysis of paraffin-embedded human pancreas cancer using 11579-1-AP (SCIN antibody) at dilution of 1:50 (under 10x lens).



Immunofluorescent analysis of HepG2 cells, using SCIN antibody 11579-1-AP at 1:25 dilution and Rhodamine-labeled goat anti-rabbit IgG (red).



IP result of anti-SCIN (IP:11579-1-AP, 4ug; Detection:11579-1-AP 1:300) with human placenta tissue lysate 2800ug.