

# DPP9 Polyclonal antibody

Catalog Number: 11568-1-AP

## Basic Information

**Catalog Number:**

11568-1-AP

**Size:**

270 µg/ml

**Source:**

Rabbit

**Isotype:**

IgG

**Immunogen Catalog Number:**

AG2145

**GenBank Accession Number:**

BC037948

**GeneID (NCBI):**

91039

**UNIPROT ID:**

Q86T12

**Full Name:**

dipeptidyl-peptidase 9

**Calculated MW:**

863 aa, 98 kDa

**Observed MW:**

98 kDa

**Purification Method:**

Antigen affinity purification

**Recommended Dilutions:**

WB 1:500-1:1000

IHC 1:50-1:500

IF/ICC 1:10-1:100

## Applications

**Tested Applications:**

IF/ICC, IHC, WB, ELISA

**Species Specificity:**

human, mouse

**Note-IHC: suggested antigen retrieval with TE buffer pH 9.0; (\*) Alternatively, antigen retrieval may be performed with citrate buffer pH 6.0**

**Positive Controls:**

**WB:** HepG2 cells, A2780 cells, MCF-7 cells, mouse heart tissue, PC-3 cells

**IHC:** human ovary tumor tissue,

**IF/ICC:** HepG2 cells, MCF-7 cells, PC-3 cells

## Background Information

Dipeptidyl peptidase 9 (DPP9), is a member of the S9B family in clan SC of the serine proteases. DPP9 has 3 isoforms with MW of 95, 98 and 101 kDa. DPP9 is involved in the regulation of the activity of their substrates and have been linked to a variety of diseases including type 2 diabetes, obesity and cancer.

## Storage

**Storage:**

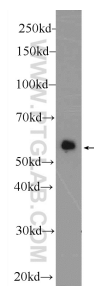
Store at -20°C. Stable for one year after shipment.

**Storage Buffer:**

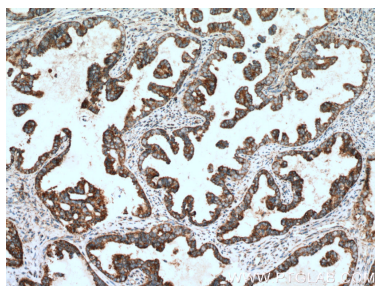
PBS with 0.02% sodium azide and 50% glycerol pH 7.3.

Aliquoting is unnecessary for -20°C storage

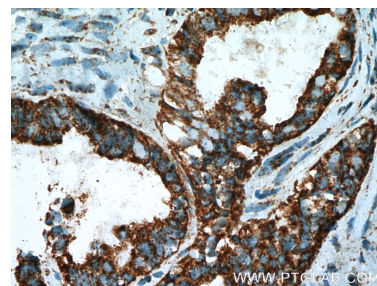
## Selected Validation Data



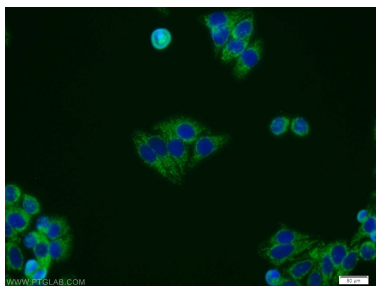
HepG2 cells were subjected to SDS PAGE followed by western blot with 11568-1-AP (DPP9 Antibody) at dilution of 1:600 incubated at room temperature for 1.5 hours.



Immunohistochemical analysis of paraffin-embedded human ovary tumor tissue slide using 11568-1-AP (DPP9 Antibody) at dilution of 1:200 (under 10x lens). Heat mediated antigen retrieval with Tris-EDTA buffer (pH 9.0).



Immunohistochemical analysis of paraffin-embedded human ovary tumor tissue slide using 11568-1-AP (DPP9 Antibody) at dilution of 1:200 (under 40x lens). Heat mediated antigen retrieval with Tris-EDTA buffer (pH 9.0).



Immunofluorescent analysis of HepG2 cells using 11568-1-AP (DPP9 antibody) at dilution of 1:25 and Alexa Fluor 488-conjugated AffiniPure Goat Anti-Rabbit IgG(H+L).