

For Research Use Only

STIM1 Polyclonal antibody

Catalog Number: 11565-1-AP

Featured Product

73 Publications



Basic Information

Catalog Number:

11565-1-AP

Source:

Rabbit

Isotype:

IgG

Immunogen Catalog Number:

AG2140

GenBank Accession Number:

BC021300

GeneID (NCBI):

6786

UNIPROT ID:

Q13586

Full Name:

stromal interaction molecule 1

Calculated MW:

685 aa, 77 kDa

Observed MW:

77-90 kDa

Purification Method:

Antigen affinity purification

Recommended Dilutions:

WB: 1:1000-1:5000

IP: 0.5-4.0 ug for 1.0-3.0 mg of total protein lysate

IHC: 1:200-1:800

IF/ICC: 1:200-1:800

FC (Intra): 0.40 ug per 10⁶ cells in a 100 µl suspension

Applications

Tested Applications:

WB, IHC, IF/ICC, FC (Intra), IP, ELISA

Cited Applications:

WB, IHC, IF, IP, CoIP

Species Specificity:

human, mouse

Cited Species:

human, mouse, rat

Note-IHC: suggested antigen retrieval with TE buffer pH 9.0; (*) Alternatively, antigen retrieval may be performed with citrate buffer pH 6.0

Positive Controls:

WB: HeLa cells, HepG2 cells, Jurkat cells, K-562 cells

IP: HeLa cells,

IHC: mouse lung tissue, human lung cancer tissue

IF/ICC: HEK-293 cells,

FC (Intra): HepG2 cells,

Background Information

STIM1, also named as GOK, is an ER Ca²⁺ sensor. Upon Ca²⁺ store depletion, STIM1 clusters at ER-plasma membrane junctions where it interacts with and gates Ca²⁺-permeable Orai1 ion channels. STIM1 is implicated in tumor growth suppression and stromal-haematopoietic cell interactions. Defects in STIM1 gene can cause immune dysfunction with impaired T-cell activation. STIM1 can inhibit L-type voltage-gated Ca(2+) channels in neurons. Temperature is an important regulator of STIM1 function. The MW of STIM1 is about 80-90 kDa which may be due to the phosphorylation or glycosylation forms. Catalog#11565-1-AP is rabbit polyclonal antibody raised against the N-terminal of human STIM1.

Notable Publications

Author	Pubmed ID	Journal	Application
Yu Chen	34592660	Cell Calcium	WB
Tong Lin	33002827	Phytomedicine	WB
Chunming Gu	36109490	Oncogenesis	WB,IF

Storage

Storage:

Store at -20°C. Stable for one year after shipment.

Storage Buffer:

PBS with 0.02% sodium azide and 50% glycerol, pH7.3

Aliquoting is unnecessary for -20°C storage

For technical support and original validation data for this product please contact:

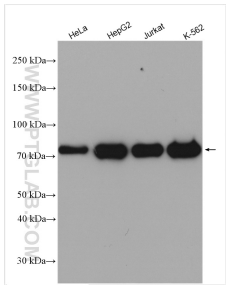
T: 4006900926

E: Proteintech-CN@ptglab.com

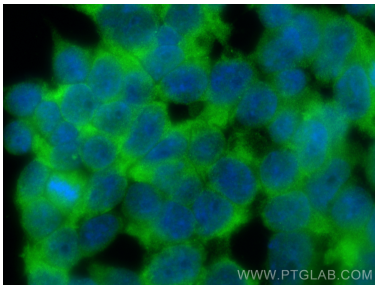
W: ptgcn.com

This product is exclusively available under Proteintech Group brand and is not available to purchase from any other manufacturer.

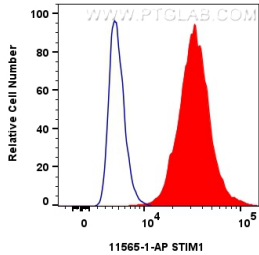
Selected Validation Data



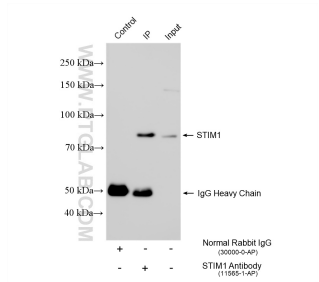
Various lysates were subjected to SDS PAGE followed by western blot with 11565-1-AP (STIM1 antibody) at dilution of 1:2500 incubated at room temperature for 1.5 hours.



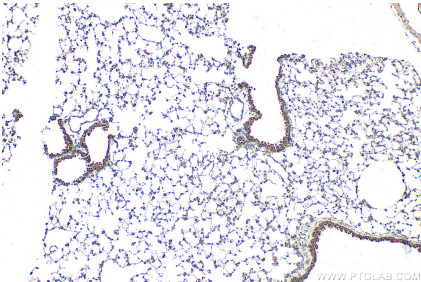
Immunofluorescent analysis of (-20°C Ethanol) fixed HEK-293 cells using STIM1 antibody (11565-1-AP) at dilution of 1:400 and CoraLite®488-Conjugated AffiniPure Goat Anti-Rabbit IgG(H+L).



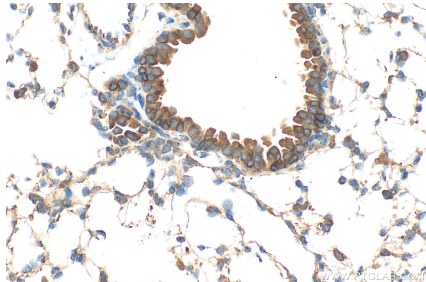
1x10⁶ HepG2 cells were intracellularly stained with 0.4 ug Anti-Human STIM1 (11565-1-AP)(red), or 0.4 ug rabbit IgG isotype control (blue). Cells were fixed with 4% PFA and permeabilized with Flow Cytometry Perm Buffer.



IP result of anti-STIM1 (IP:11565-1-AP, 4ug; Detection:11565-1-AP 1:20000) with HeLa cells lysate 1400 ug.



Immunohistochemical analysis of paraffin-embedded mouse lung tissue slide using 11565-1-AP (STIM1 antibody) at dilution of 1:400 (under 10x lens). Heat mediated antigen retrieval with Tris-EDTA buffer (pH 9.0).



Immunohistochemical analysis of paraffin-embedded mouse lung tissue slide using 11565-1-AP (STIM1 antibody) at dilution of 1:400 (under 40x lens). Heat mediated antigen retrieval with Tris-EDTA buffer (pH 9.0).