

For Research Use Only

# AGTRAP Polyclonal antibody

Catalog Number: 11559-1-AP

Featured Product

5 Publications



## Basic Information

Catalog Number:

11559-1-AP

Size:

300 µg/ml

Source:

Rabbit

Isotype:

IgG

Immunogen Catalog Number:

AG2116

GenBank Accession Number:

BC017328

GeneID (NCBI):

57085

UNIPROT ID:

Q6RW13

Full Name:

angiotensin II receptor-associated protein

Calculated MW:

159 aa, 18 kDa

Purification Method:

Antigen affinity purification

Recommended Dilutions:

IHC 1:10-1:100

IF/ICC 1:20-1:200

## Applications

Tested Applications:

IHC, IF/ICC, ELISA

Cited Applications:

WB, IHC

Species Specificity:

human

Cited Species:

human, mouse, rat

**Note-IHC: suggested antigen retrieval with TE buffer pH 9.0; (\*) Alternatively, antigen retrieval may be performed with citrate buffer pH 6.0**

Positive Controls:

IHC : human pancreas cancer tissue,

IF/ICC : HEK-293 cells,

## Background Information

### Notable Publications

Author	Pubmed ID	Journal	Application
Tao Guo	33753727	Cell Death Dis	IHC
Dandan Wang	35414770	Int J Biol Sci	WB,IHC
Qin Chen	32047817	Biomed Res Int	WB

## Storage

Storage:

Store at -20°C. Stable for one year after shipment.

Storage Buffer:

PBS with 0.02% sodium azide and 50% glycerol pH 7.3.

Aliquoting is unnecessary for -20°C storage

For technical support and original validation data for this product please contact:

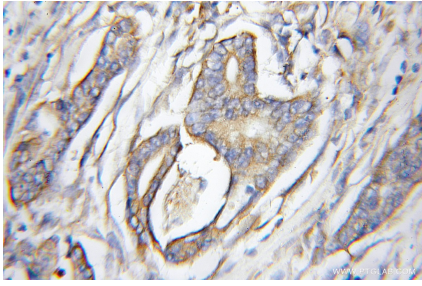
T: 4006900926

E: [Proteintech-CN@ptglab.com](mailto:Proteintech-CN@ptglab.com)

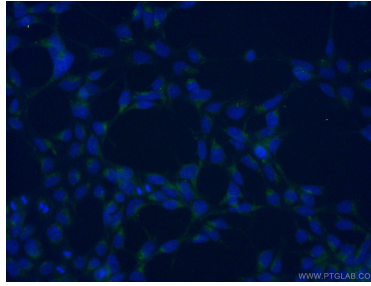
W: [ptgcn.com](http://ptgcn.com)

This product is exclusively available under Proteintech Group brand and is not available to purchase from any other manufacturer.

## Selected Validation Data



Immunohistochemical analysis of paraffin-embedded human pancreas cancer using 11559-1-AP (AGTRAP antibody) at dilution of 1:10 (under 10x lens).



Immunofluorescent analysis of (-20°C Ethanol) fixed HEK-293 cells using 11559-1-AP (AGTRAP antibody) at dilution of 1:50 and Alexa Fluor 488-conjugated AffiniPure Goat Anti-Rabbit IgG(H+L).