

For Research Use Only

ORC5L Polyclonal antibody

Catalog Number: 11542-1-AP 2 Publications



Basic Information

Catalog Number: 11542-1-AP	GenBank Accession Number: BC023652	Purification Method: Antigen affinity purification
Size: 233 µg/ml	GeneID (NCBI): 5001	Recommended Dilutions: WB 1:500-1:1000 IHC 1:20-1:200 IF 1:50-1:500
Source: Rabbit	UNIPROT ID: O43913	
Isotype: IgG	Full Name: origin recognition complex, subunit 5-like (yeast)	
Immunogen Catalog Number: AG2133	Calculated MW: 435 aa, 50 kDa	
	Observed MW: 50 kDa	

Applications

Tested Applications: IF/ICC, IHC, WB, ELISA	Positive Controls: WB : mouse kidney tissue, human kidney tissue, mouse ovary tissue IHC : human pancreas cancer tissue, IF : HepG2 cells,
Cited Applications: IHC	
Species Specificity: human, mouse, rat	
Cited Species: human	
Note-IHC: suggested antigen retrieval with TE buffer pH 9.0; (*) Alternatively, antigen retrieval may be performed with citrate buffer pH 6.0	

Background Information

Origin recognition complex (ORC) plays an essential role in the initiation of chromosome DNA replication and transcriptional silencing. ORC binds in an ATP-dependent manner to several well-defined autonomously replicating sequences that serve as the chromosomal replication origins. ORC5L is one of the 6 subunits of ORC.

Notable Publications

Author	Pubmed ID	Journal	Application
Min Tang	36205357	Cancer Med	IHC
Yushen Su	33732365	Oncol Lett	IHC

Storage

Storage:
Store at -20°C. Stable for one year after shipment.
Storage Buffer:
PBS with 0.02% sodium azide and 50% glycerol pH 7.3.
Aliquoting is unnecessary for -20°C storage

For technical support and original validation data for this product please contact:

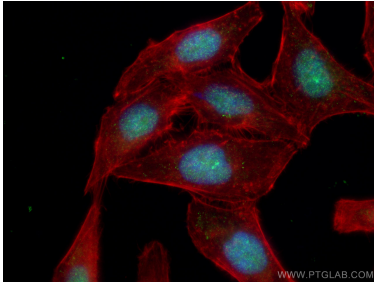
T: 4006900926

E: Proteintech-CN@ptglab.com

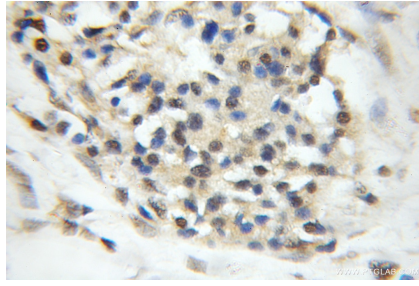
W: ptgcn.com

This product is exclusively available under Proteintech Group brand and is not available to purchase from any other manufacturer.

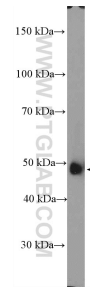
Selected Validation Data



Immunofluorescent analysis of (4% PFA) fixed HepG2 cells using 11542-1-AP (ORC5L antibody), at dilution of 1:200 and CoraLite®488-Conjugated AffiniPure Goat Anti-Rabbit IgG(H+L).



Immunohistochemical analysis of paraffin-embedded human pancreas cancer using 11542-1-AP (ORC5L antibody) at dilution of 1:50 (under 10x lens).



mouse kidney tissue were subjected to SDS PAGE followed by western blot with 11542-1-AP (ORC5L Antibody) at dilution of 1:600 incubated at room temperature for 1.5 hours.