

PLAGL2 Polyclonal antibody

Catalog Number: 11540-1-AP

Featured Product

12 Publications

Basic Information

Catalog Number:

11540-1-AP

Size:

450 µg/ml

Source:

Rabbit

Isotype:

IgG

Immunogen Catalog Number:

AG2137

GenBank Accession Number:

BC023655

GeneID (NCBI):

5326

UNIPROT ID:

Q9UPG8

Full Name:

pleiomorphic adenoma gene-like 2

Calculated MW:

496 aa, 55 kDa

Observed MW:

50-55 kDa, 70 kDa

Purification Method:

Antigen affinity purification

Recommended Dilutions:

WB 1:1000-1:4000

Applications

Tested Applications:

WB, ELISA

Cited Applications:

WB, IP, IF, IHC, ChIP

Species Specificity:

human, mouse

Cited Species:

human, mouse

Positive Controls:

WB: Raji cells, mouse kidney tissue

Background Information

PLAGL2, also named KIAA0198, belongs to the krueppel C2H2-type zinc-finger protein family. It shows weak transcriptional activatory activity. PLAGL2, a proto-oncogene, is implicated in a variety of cancers including acute myeloid leukemia (AML), malignant glioma, colon cancer, and lung adenocarcinoma. PLAGL2 can function as a tumor suppressor by initiating cell cycle arrest and apoptosis. The calculated molecular weight of PLAGL2 is 55 kDa, but the SUMO1-modified form is 68 kDa (PMID: 30535429).

Notable Publications

Author	Pubmed ID	Journal	Application
Kari R. Fischer	36399309	Genes Genomics	WB, IF
Liang Wu	30822775	Pediatr Res	WB, IHC
Daojiang Li	31279780	EBioMedicine	WB, IHC, IF

Storage

Storage:

Store at -20°C. Stable for one year after shipment.

Storage Buffer:

PBS with 0.02% sodium azide and 50% glycerol pH 7.3.

Aliquoting is unnecessary for -20°C storage

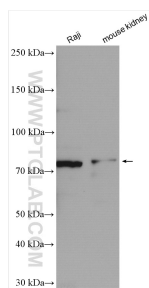
For technical support and original validation data for this product please contact:

T: 4006900926

E: Proteintech-CN@ptglab.comW: ptgcn.com

This product is exclusively available under Proteintech Group brand and is not available to purchase from any other manufacturer.

Selected Validation Data



Various lysates were subjected to SDS PAGE followed by western blot with 11540-1-AP (PLAGL2 antibody) at dilution of 1:2000 incubated at room temperature for 1.5 hours.