

# LRRC8D Polyclonal antibody

 Catalog Number: 11537-1-AP 2 Publications

## Basic Information

<b>Catalog Number:</b> 11537-1-AP  <b>Size:</b> 550 µg/ml  <b>Source:</b> Rabbit  <b>Isotype:</b> IgG  <b>Immunogen Catalog Number:</b> AG2138	<b>GenBank Accession Number:</b> BC024159  <b>GeneID (NCBI):</b> 55144  <b>UNIPROT ID:</b> Q7L1W4  <b>Full Name:</b> leucine rich repeat containing 8 family, member D  <b>Calculated MW:</b> 858 aa, 98 kDa  <b>Observed MW:</b> 98-120 kDa	<b>Purification Method:</b> Antigen affinity purification  <b>Recommended Dilutions:</b> WB 1:500-1:2000 IHC 1:50-1:500 IF 1:50-1:500
---	--	---

## Applications

<b>Tested Applications:</b> IF/ICC, IHC, WB, ELISA  <b>Cited Applications:</b> WB, IHC  <b>Species Specificity:</b> human, mouse, rat  <b>Cited Species:</b> human  <b>Note-IHC: suggested antigen retrieval with TE buffer pH 9.0; (*) Alternatively, antigen retrieval may be performed with citrate buffer pH 6.0</b>	<b>Positive Controls:</b>  <b>WB:</b> mouse brain tissue, HEK-293 cells  <b>IHC:</b> human brain tissue,  <b>IF:</b> HeLa cells,
--	--

## Background Information

LRRC8D (or LRRC5L) gene encodes a 98-kDa multi-pass membrane protein leucine-rich repeat-containing protein 8D, which contains 13 LRRs (leucine-rich repeats). The molecular function of this protein is so far not well understood. Recently, LRRC8D gene was found to be up-regulated after IL-2 deprivation in immortalised Interleukin-2(IL-2)-dependent human T cells, indicating a possible involvement of LRRC8D in cancer development. This LRRC8D antibody can't cross-recognize LRRC8A.

## Notable Publications

Author	Pubmed ID	Journal	Application
Magdalena Jahn	33596608	Cell Physiol Biochem	IHC
Greta Pintacuda	36950384	Cell Genom	WB

## Storage

**Storage:**  
 Store at -20°C. Stable for one year after shipment.  
**Storage Buffer:**  
 PBS with 0.02% sodium azide and 50% glycerol pH 7.3.  
 Aliquoting is unnecessary for -20°C storage

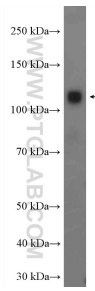
For technical support and original validation data for this product please contact:

T: 4006900926

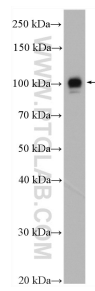
E: [Proteintech-CN@ptglab.com](mailto:Proteintech-CN@ptglab.com)W: [ptgcn.com](http://ptgcn.com)

**This product is exclusively available under Proteintech Group brand and is not available to purchase from any other manufacturer.**

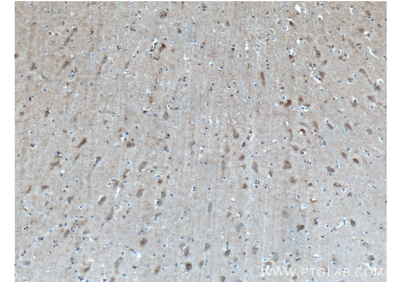
## Selected Validation Data



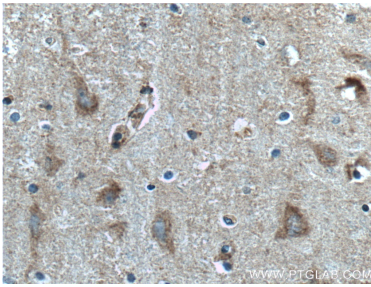
mouse brain tissue were subjected to SDS PAGE followed by western blot with 11537-1-AP (LRRC8D antibody) at dilution of 1:1000 incubated at room temperature for 1.5 hours.



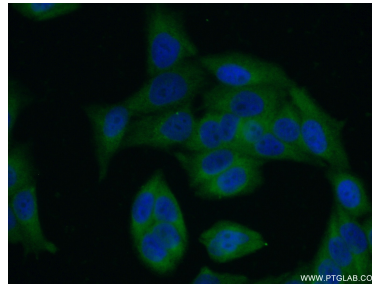
HEK-293 cells were subjected to SDS PAGE followed by western blot with 11537-1-AP (LRRC8D antibody) at dilution of 1:600 incubated at room temperature for 1.5 hours.



Immunohistochemical analysis of paraffin-embedded human brain tissue slide using 11537-1-AP (LRRC8D antibody) at dilution of 1:200 (under 10x lens. Heat mediated antigen retrieval with Tris-EDTA buffer (pH 9.0).



Immunohistochemical analysis of paraffin-embedded human brain tissue slide using 11537-1-AP (LRRC8D antibody) at dilution of 1:200 (under 40x lens. Heat mediated antigen retrieval with Tris-EDTA buffer (pH 9.0).



Immunofluorescent analysis of (-20°C Ethanol) fixed HeLa cells using 11537-1-AP (LRRC8D antibody) at dilution of 1:50 and Alexa Fluor 488-conjugated AffiniPure Goat Anti-Rabbit IgG(H+L).