

For Research Use Only

# DCI Polyclonal antibody

Catalog Number: 11535-1-AP



## Basic Information

<b>Catalog Number:</b> 11535-1-AP	<b>GenBank Accession Number:</b> BC020228	<b>Purification Method:</b> Antigen affinity purification
<b>Size:</b> 500 µg/ml	<b>GeneID (NCBI):</b> 1632	<b>Recommended Dilutions:</b> WB 1:1000-1:8000 IHC 1:20-1:200 IF 1:10-1:100
<b>Source:</b> Rabbit	<b>UNIPROT ID:</b> P42126	
<b>Isotype:</b> IgG	<b>Full Name:</b> dodecenoyl-Coenzyme A delta isomerase (3,2 trans-enoyl-Coenzyme A isomerase)	
<b>Immunogen Catalog Number:</b> AG2094	<b>Calculated MW:</b> 302 aa, 33 kDa	
	<b>Observed MW:</b> 31 kDa	

## Applications

<b>Tested Applications:</b> IF/ICC, IHC, WB, ELISA	<b>Positive Controls:</b>
<b>Species Specificity:</b> human, mouse, rat	<b>WB:</b> HEK-293 cells, human lung tissue, human brain tissue, human kidney tissue, BxPC-3 cells, COLO 320 cells
<b>Note-IHC: suggested antigen retrieval with TE buffer pH 9.0; (*) Alternatively, antigen retrieval may be performed with citrate buffer pH 6.0</b>	<b>IHC:</b> human prostate cancer tissue,
	<b>IF:</b> BxPC-3 cells,

## Background Information

EC11(enoyl-CoA delta isomerase 1, mitochondrial) is also named as DCI(dodecenoyl-CoA isomerase) and belongs to the enoyl-CoA hydratase/isomerase family. It is able to isomerize both 3-cis and 3-trans double bonds into the 2-trans form in a range of enoyl-CoA species. The full length protein has a transit peptide and 2 isoforms produced by alternative splicing and can exist as a homotrimer(PMID:15351645).

## Storage

**Storage:**  
Store at -20°C. Stable for one year after shipment.  
**Storage Buffer:**  
PBS with 0.02% sodium azide and 50% glycerol pH 7.3.  
Aliquoting is unnecessary for -20°C storage

For technical support and original validation data for this product please contact:

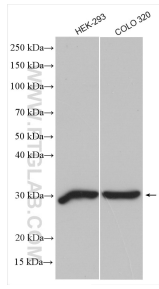
T: 4006900926

E: Proteintech-CN@ptglab.com

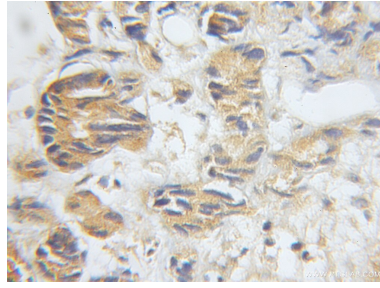
W: ptgcn.com

**This product is exclusively available under Proteintech Group brand and is not available to purchase from any other manufacturer.**

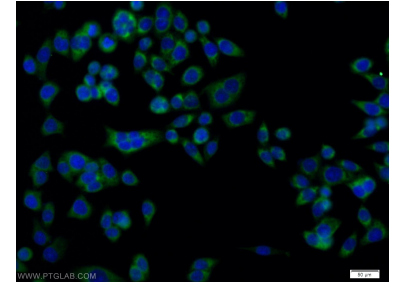
## Selected Validation Data



Various lysates were subjected to SDS PAGE followed by western blot with 11535-1-AP (DCI antibody) at dilution of 1:4000 incubated at room temperature for 1.5 hours.



Immunohistochemical analysis of paraffin-embedded human prostate cancer using 11535-1-AP (DCI antibody) at dilution of 1:50 (under 10x lens).



Immunofluorescent analysis of BxPC-3 cells using 11535-1-AP (DCI antibody) at dilution of 1:25 and Alexa Fluor 488-conjugated AffiniPure Goat Anti-Rabbit IgG(H+L).