

MEPCE Polyclonal antibody

Catalog Number: 11526-1-AP

Featured Product

4 Publications

Basic Information

Catalog Number:

11526-1-AP

Size:

400 µg/ml

Source:

Rabbit

Isotype:

IgG

Immunogen Catalog Number:

AG2092

GenBank Accession Number:

BC018935

GeneID (NCBI):

56257

UNIPROT ID:

Q7L2J0

Full Name:

methylphosphate capping enzyme

Calculated MW:

689 aa, 74 kDa

Observed MW:

74 kDa

Purification Method:

Antigen affinity purification

Recommended Dilutions:

WB 1:500-1:1000

IHC 1:20-1:200

Applications

Tested Applications:

IHC, WB, ELISA

Cited Applications:

WB, IP

Species Specificity:

human

Cited Species:

human, zebrafish

Note-IHC: suggested antigen retrieval with TE buffer pH 9.0; (*) Alternatively, antigen retrieval may be performed with citrate buffer pH 6.0

Positive Controls:

WB : HeLa cells, MCF-7 cells, K-562 cells

IHC : human colon cancer tissue,

Background Information

MEPCE is a Component of the 7SK snRNP complex, and a S-adenosyl-L-methionine-dependent methyltransferase that adds a methylphosphate cap at the 5'-end of 7SK snRNA, which leads to its stabilization.

Notable Publications

Author	Pubmed ID	Journal	Application
Eilebrecht Sebastian S	21957495	RNA Biol	WB
Kamaleldin E Elagib	24369834	Dev Cell	WB
Eilebrecht Sebastian S	21087998	Nucleic Acids Res	WB

Storage

Storage:

Store at -20°C. Stable for one year after shipment.

Storage Buffer:

PBS with 0.02% sodium azide and 50% glycerol pH 7.3.

Aliquoting is unnecessary for -20°C storage

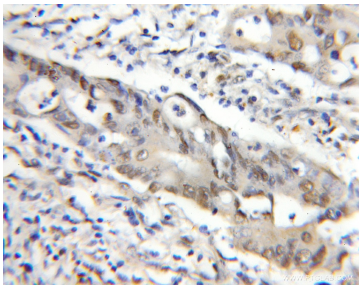
For technical support and original validation data for this product please contact:

T: 4006900926

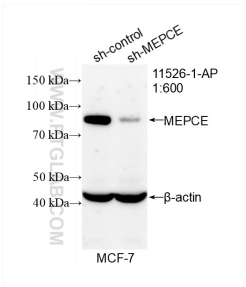
E: Proteintech-CN@ptglab.comW: ptgcn.com

This product is exclusively available under Proteintech Group brand and is not available to purchase from any other manufacturer.

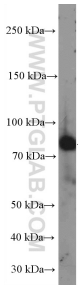
Selected Validation Data



Immunohistochemical analysis of paraffin-embedded human colon cancer using 11526-1-AP (MEPCE antibody) at dilution of 1:50 (under 10x lens).



WB result of MEPCE antibody (11526-1-AP; 1:600; incubated at room temperature for 1.5 hours) with sh-Control and sh-MEPCE transfected MCF-7 cells.



HeLa cells were subjected to SDS PAGE followed by western blot with 11526-1-AP (MEPCE Antibody) at dilution of 1:600 incubated at room temperature for 1.5 hours.