

For Research Use Only

MCC Polyclonal antibody

Catalog Number: 11525-1-AP

Featured Product

4 Publications



Basic Information

Catalog Number:

11525-1-AP

Size:

500 µg/ml

Source:

Rabbit

Isotype:

IgG

Immunogen Catalog Number:

AG2089

GenBank Accession Number:

BC018919

GeneID (NCBI):

4163

UNIPROT ID:

P23508

Full Name:

mutated in colorectal cancers

Calculated MW:

829 aa, 93 kDa

Observed MW:

98 kDa, 113-118 kDa

Purification Method:

Antigen affinity purification

Recommended Dilutions:

WB 1:500-1:2000

IP 0.5-4.0 µg for 1.0-3.0 mg of total protein lysate

IHC 1:50-1:500

IF 1:10-1:100

Applications

Tested Applications:

WB, IP, IF/ICC, IHC, ELISA

Cited Applications:

WB, IF, IHC

Species Specificity:

human, mouse

Cited Species:

human, mouse

Note-IHC: suggested antigen retrieval with TE buffer pH 9.0; (*) Alternatively, antigen retrieval may be performed with citrate buffer pH 6.0

Positive Controls:

WB: fetal human brain tissue, HeLa cells, human brain tissue, L02 cells, mouse liver tissue

IP: PC-3 cells,

IHC: human prostate cancer tissue,

IF: PC-3 cells,

Background Information

MCC (mutated in colorectal cancers) gene been previously been identified by virtue of its mutation in human colorectal tumors. As a candidate for the putative colorectal tumor suppressor gene located at 5q21, MCC protein suppresses cell proliferation and the Wnt/b-catenin pathway in colorectal cancer cells. In addition, MCC is involved in cell migration via binding with Scrib and b-catenin,

Notable Publications

Author	Pubmed ID	Journal	Application
F A Benthani	29035389	Oncogene	IF
Hui Song	34926519	Front Med (Lausanne)	WB,IHC,IF
Corbo Claudia C	22623141	Proteomics	WB

Storage

Storage:

Store at -20°C. Stable for one year after shipment.

Storage Buffer:

PBS with 0.02% sodium azide and 50% glycerol pH 7.3.

Aliquoting is unnecessary for -20°C storage

For technical support and original validation data for this product please contact:

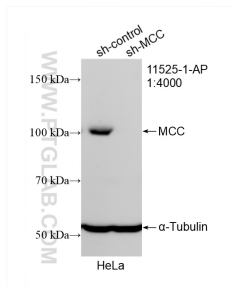
T: 4006900926

E: Proteintech-CN@ptglab.com

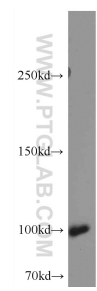
W: ptgcn.com

This product is exclusively available under Proteintech Group brand and is not available to purchase from any other manufacturer.

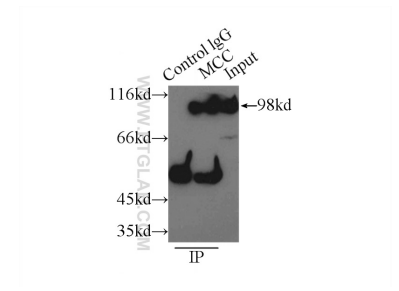
Selected Validation Data



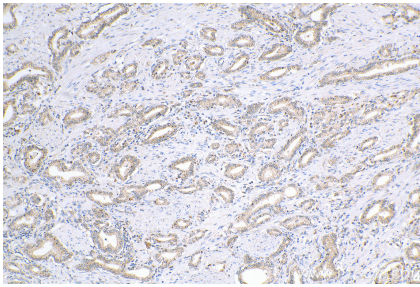
WB result of MCC antibody (11525-1-AP; 1:4000; incubated at room temperature for 1.5 hours) with sh-Control and sh-MCC transfected HeLa cells.



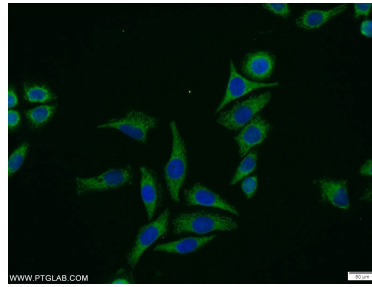
fetal human brain tissue were subjected to SDS PAGE followed by western blot with 11525-1-AP (MCC Antibody) at dilution of 1:1000 incubated at room temperature for 1.5 hours.



IP result of anti-MCC (IP:11525-1-AP, 3ug; Detection:11525-1-AP 1:500) with PC-3 cells lysate 5000ug.



Immunohistochemical analysis of paraffin-embedded human prostate cancer tissue slide using 11525-1-AP (MCC antibody) at dilution of 1:200 (under 10x lens). Heat mediated antigen retrieval with Tris-EDTA buffer (pH 9.0).



Immunofluorescent analysis of PC-3 cells using 11525-1-AP (MCC antibody) at dilution of 1:25 and Alexa Fluor 488-conjugated AffiniPure Goat Anti-Rabbit IgG(H+L).