

PTP4A1/PRL1 Polyclonal antibody

Catalog Number: 11508-1-AP

Featured Product

7 Publications

Basic Information

Catalog Number:

11508-1-AP

Size:

300 µg/ml

Source:

Rabbit

Isotype:

IgG

Immunogen Catalog Number:

AG2067

GenBank Accession Number:

BC023975

GeneID (NCBI):

7803

UNIPROT ID:

Q93096

Full Name:

protein tyrosine phosphatase type

IVA, member 1

Calculated MW:

20 kDa

Observed MW:

18-20 kDa

Purification Method:

Antigen affinity purification

Recommended Dilutions:

WB 1:500-1:1000

IHC 1:50-1:500

Applications

Tested Applications:

IHC, WB, ELISA

Cited Applications:

WB, IHC

Species Specificity:

human, mouse

Cited Species:

human, mouse

Note-IHC: suggested antigen retrieval with TE buffer pH 9.0; (*) Alternatively, antigen retrieval may be performed with citrate buffer pH 6.0

Positive Controls:

WB : MCF-7 cells, HeLa cells, HepG2 cells

IHC : human pancreas cancer tissue,

Background Information

PTP4A1 (protein tyrosine phosphatase type IVA, member 1), also named as PRL1, HH72, PRL-1, PTP(CAAX1), PTPCAAX1, DKFZp779M0721, belongs to the protein-tyrosine phosphatase family, which play an important role in maintaining appropriate tyrosine phosphorylation levels in the cell during development and tissue regeneration (PMID:19341304). PTP4A1 is a PTPase and that it is highly expressed in growing hepatic cells and some tumor cell lines and is located primarily in the cell nucleus, and its overexpression modulates the growth of cells (PMID:8196618). PTP4A1 can exist as dimer, trimer and higher oligomers in vivo (PMID: 15571731, 18224294).

Notable Publications

Author	Pubmed ID	Journal	Application
Chang Zhou	26722251	Oncol Lett	WB
Zhou Chang C	23696794	PLoS One	WB
Jessica Yun	35020952	Int J Cancer	WB, IHC

Storage

Storage:

Store at -20°C. Stable for one year after shipment.

Storage Buffer:

PBS with 0.02% sodium azide and 50% glycerol pH 7.3.

Aliquoting is unnecessary for -20°C storage

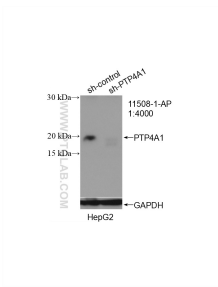
For technical support and original validation data for this product please contact:

T: 4006900926

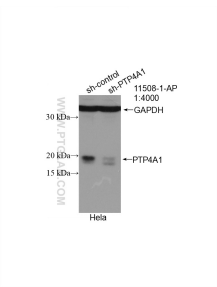
E: Proteintech-CN@ptglab.comW: ptgcn.com

This product is exclusively available under Proteintech Group brand and is not available to purchase from any other manufacturer.

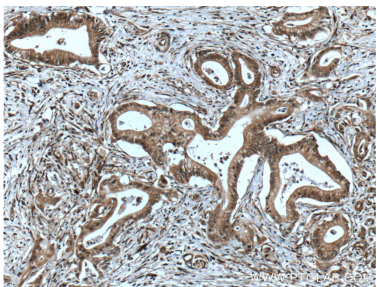
Selected Validation Data



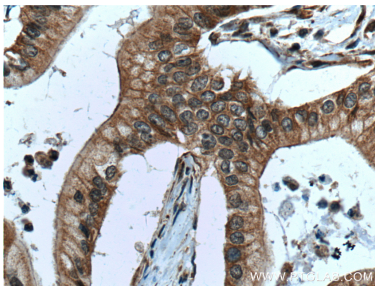
WB result of PTP4A1/PRL1 antibody (11508-1-AP; 1:4000; incubated at room temperature for 1.5 hours) with sh-Control and sh-PTP4A1/PRL1 transfected HepG2 cells.



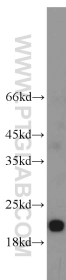
WB result of PTP4A1/PRL1 antibody (11508-1-AP; 1:4000; incubated at room temperature for 1.5 hours) with sh-Control and sh-PTP4A1/PRL1 transfected HeLa cells.



Immunohistochemical analysis of paraffin-embedded human pancreas cancer tissue slide using 11508-1-AP (PTP4A1/PRL1 antibody) at dilution of 1:100 (under 10x lens. Heat mediated antigen retrieval with Tris-EDTA buffer (pH 9.0).



Immunohistochemical analysis of paraffin-embedded human pancreas cancer tissue slide using 11508-1-AP (PTP4A1/PRL1 antibody) at dilution of 1:100 (under 40x lens. Heat mediated antigen retrieval with Tris-EDTA buffer (pH 9.0).



MCF7 cells were subjected to SDS PAGE followed by western blot with 11508-1-AP (PTP4A1/PRL1 antibody) at dilution of 1:800 incubated at room temperature for 1.5 hours.