

For Research Use Only

APOL1 Polyclonal antibody

Catalog Number: 11486-2-AP

Featured Product

24 Publications



Basic Information

Catalog Number:

11486-2-AP

Size:

500 µg/ml

Source:

Rabbit

Isotype:

IgG

Immunogen Catalog Number:

AG2016

GenBank Accession Number:

BC017331

GeneID (NCBI):

8542

UNIPROT ID:

O14791

Full Name:

apolipoprotein L, 1

Calculated MW:

44 kDa

Observed MW:

39 kDa

Purification Method:

Antigen affinity purification

Recommended Dilutions:

WB 1:1000-1:6000

IP 0.5-4.0 µg for 1.0-3.0 mg of total protein lysate

IHC 1:50-1:4000

IF 1:200-1:800

Applications

Tested Applications:

FC, IF/ICC, IHC, IP, WB, ELISA

Cited Applications:

WB, IP, IF, IHC

Species Specificity:

human

Cited Species:

human, Trypanosoma brucei

Note-IHC: suggested antigen retrieval with TE buffer pH 9.0; (*) Alternatively, antigen retrieval may be performed with citrate buffer pH 6.0

Positive Controls:

WB: A375 cells, HepG2 cells, A2780 cells, human plasma, SW 1990 cells, A549 cells, SKOV-3 cells, HeLa cells, MCF-7 cells

IP: HepG2 cells, human plasma tissue

IHC: human kidney tissue, human liver tissue, human pancreas tissue, human spleen tissue, human testis tissue

IF: HEK-293 cells, HepG2 cells

Background Information

Human apolipo-protein L1 (APOL1) is a minor component of plasma high density lipoprotein (HDL) particles, acting as an interacting protein of apolipoprotein A1 (ApoA1). The human ApoL protein family was thought to be predominantly involved in lipid transport and metabolism. APOL1 is also involved in host innate immunity against Trypanosoma parasites. Once activated, APOL1 can lyse the parasite and protect human from infection. Genetic variants in APOL1 gene, which are found in African ancestry with high frequency, associate with chronic kidney disease, like focal segmental glomerulosclerosis (FSGS), HIV-associated nephropathy (HIVAN), and hypertensive nephropathy. APOL1 share structural and functional similarities with proteins of the Bcl-2 family and may have roles in apoptosis and autophagy. It is notable that APOL1 exists only in human and a few other primate species, and mouse does not express an APOL1 orthologue. This antibody recognizes the endogenous APOL1 of 39-45 kDa in blood lysate.

Notable Publications

Author	Pubmed ID	Journal	Application
David H Vanderpe	36449077	Pflugers Arch	IF
Xiaohui Liu	29123261	Br J Cancer	IHC
Russell Thomson	24808134	Proc Natl Acad Sci U S A	WB

Storage

Storage:

Store at -20°C. Stable for one year after shipment.

Storage Buffer:

PBS with 0.02% sodium azide and 50% glycerol pH 7.3.

Aliquoting is unnecessary for -20°C storage

For technical support and original validation data for this product please contact:

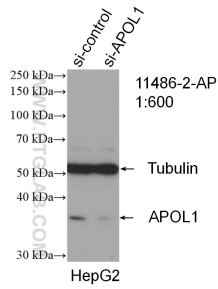
T: 4006900926

E: Proteintech-CN@ptglab.com

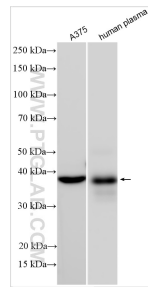
W: ptgcn.com

This product is exclusively available under Proteintech Group brand and is not available to purchase from any other manufacturer.

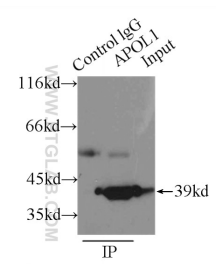
Selected Validation Data



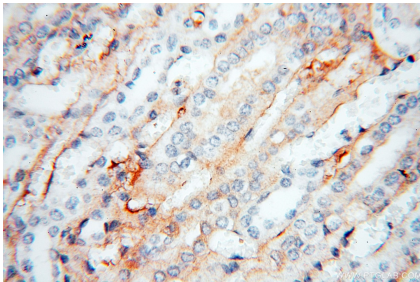
WB result of APOL1 antibody (11486-2-AP; 1:600; incubated at room temperature for 1.5 hours) with sh-Control and sh-APOL1 transfected HepG2 cells.



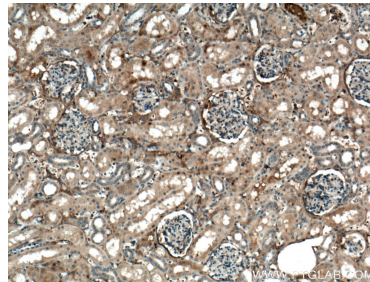
Various lysates were subjected to SDS PAGE followed by western blot with 11486-2-AP (APOL1 antibody) at dilution of 1:3000 incubated at room temperature for 1.5 hours.



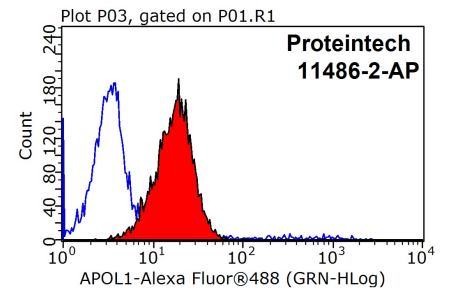
IP result of anti-APOL1 (IP:11486-2-AP, 3ug; Detection:11486-2-AP 1:500) with HepG2 cells lysate 6000ug.



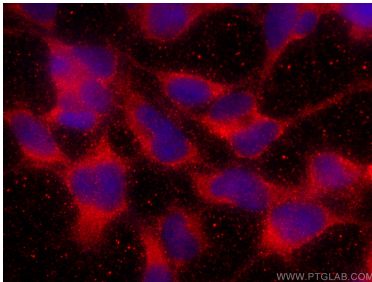
Immunohistochemical analysis of paraffin-embedded human kidney using 11486-2-AP (APOL1 antibody) at dilution of 1:50 (under 40x lens).



Immunohistochemical analysis of paraffin-embedded human kidney tissue slide using 11486-2-AP (APOL1 antibody) at dilution of 1:200 (under 10x lens. Heat mediated antigen retrieval with Tris-EDTA buffer (pH 9.0).



1X10⁶ HepG2 cells were stained with 0.2ug APOL1 antibody (11486-2-AP, red) and control antibody (blue). Fixed with 90% MeOH blocked with 3% BSA (30 min). Alexa Fluor 488-conjugated AffiniPure Goat Anti-Rabbit IgG(H+L) with dilution 1:1000.



Immunofluorescent analysis of (-20°C Ethanol) fixed HEK-293 cells using APOL1 antibody (11486-2-AP) at dilution of 1:400 and CoraLite@594-Conjugated AffiniPure Goat Anti-Rabbit IgG(H+L).