

# MPG Polyclonal antibody

Catalog Number: 11481-2-AP

3 Publications

## Basic Information

## Catalog Number:

11481-2-AP

## Size:

133 µg/ml

## Source:

Rabbit

## Isotype:

IgG

## Immunogen Catalog Number:

AG2034

## GenBank Accession Number:

BC014991

## GeneID (NCBI):

4350

## UNIPROT ID:

P29372

## Full Name:

N-methylpurine-DNA glycosylase

## Calculated MW:

293 aa, 32 kDa

## Observed MW:

33 kDa

## Purification Method:

Antigen affinity purification

## Recommended Dilutions:

WB 1:500-1:1000

IP 0.5-4.0 µg for 1.0-3.0 mg of total protein lysate

IHC 1:20-1:200

## Applications

## Tested Applications:

IHC, IP, WB, ELISA

## Cited Applications:

WB

## Species Specificity:

human, mouse, rat

## Cited Species:

human, mouse

**Note-IHC: suggested antigen retrieval with TE buffer pH 9.0; (\*) Alternatively, antigen retrieval may be performed with citrate buffer pH 6.0**

## Positive Controls:

WB : HepG2 cells, Jurkat cells, MCF-7 cells

IP : HepG2 cells,

IHC : human prostate cancer tissue,

## Background Information

N-methylpurine DNA glycosylase (MPG), an initiator glycosylase of the base excision repair (BER) pathway, typically repairs alkyl-induced DNA adducts, many of which are associated with genomic instability and tumorigenic risk [PMID:22801474]. MPG initiates BER by removing TMZ-induced N3-methyladenine and N7-methylguanine base lesions, leaving abasic sites (AP sites) in DNA for further processing by BER [PMID:21377995]. MPG involves in modulating the genotoxic threshold response induced by the Sn2 alkylating agent ethyl methanesulfonate (EMS) [PMID:21071726].

## Notable Publications

Author	Pubmed ID	Journal	Application
Mizuki Yamamoto	25829532	J Radiat Res	WB
Xuedan Sun	32149459	EMBO Rep	WB
Bowen Li	35712126	J Oncol	WB

## Storage

## Storage:

Store at -20°C. Stable for one year after shipment.

## Storage Buffer:

PBS with 0.02% sodium azide and 50% glycerol pH 7.3.

Aliquoting is unnecessary for -20°C storage

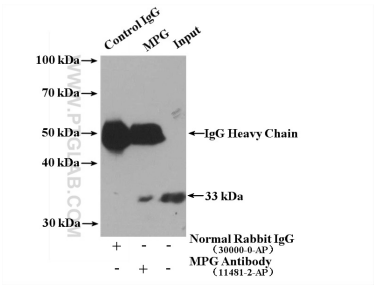
For technical support and original validation data for this product please contact:

T: 4006900926

E: [Proteintech-CN@ptglab.com](mailto:Proteintech-CN@ptglab.com)W: [ptgcn.com](http://ptgcn.com)

**This product is exclusively available under Proteintech Group brand and is not available to purchase from any other manufacturer.**

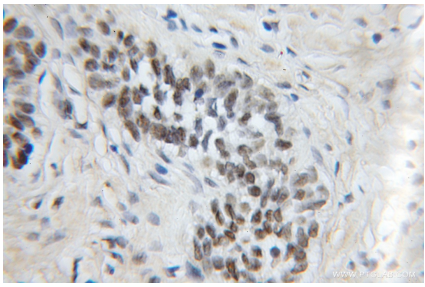
Selected Validation Data



IP result of anti-MPG (IP:11481-2-AP, 4ug; Detection:11481-2-AP 1:300) with HepG2 cells lysate 2200 ug.



HepG2 cells were subjected to SDS PAGE followed by western blot with 11481-2-AP (MPG antibody) at dilution of 1:100 incubated at room temperature for 1.5 hours.



Immunohistochemical analysis of paraffin-embedded human prostate cancer using 11481-2-AP (MPG antibody) at dilution of 1:50 (under 10x lens).