

For Research Use Only

# SPDEF Polyclonal antibody

Catalog Number: 11467-1-AP **8 Publications**



## Basic Information

**Catalog Number:**

11467-1-AP

**Size:**

600 µg/ml

**Source:**

Rabbit

**Isotype:**

IgG

**Immunogen Catalog Number:**

AG2020

**GenBank Accession Number:**

BC021299

**GeneID (NCBI):**

25803

**UNIPROT ID:**

O95238

**Full Name:**

SAM pointed domain containing ets transcription factor

**Calculated MW:**

335 aa, 38 kDa

**Observed MW:**

38-44 kDa

**Purification Method:**

Antigen affinity purification

**Recommended Dilutions:**

WB 1:500-1:2000

## Applications

**Tested Applications:**

WB, ELISA

**Cited Applications:**

WB, IF, IHC

**Species Specificity:**

human

**Cited Species:**

human, rat, mouse

**Positive Controls:**

WB : MCF-7 cells,

## Background Information

### Notable Publications

Author	Pubmed ID	Journal	Application
Yu-Hua Lin	34139546	Phytomedicine	WB,IF
Jian Fang	35297435	Food Funct	WB
Linhao Zhang	32144600	Dig Dis Sci	WB

## Storage

**Storage:**

Store at -20°C. Stable for one year after shipment.

**Storage Buffer:**

PBS with 0.02% sodium azide and 50% glycerol pH 7.3.

Aliquoting is unnecessary for -20°C storage

For technical support and original validation data for this product please contact:

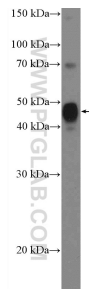
T: 4006900926

E: Proteintech-CN@ptglab.com

W: ptgcn.com

**This product is exclusively available under Proteintech Group brand and is not available to purchase from any other manufacturer.**

## Selected Validation Data



MCF-7 cells were subjected to SDS PAGE followed by western blot with 11467-1-AP (SPDEF Antibody) at dilution of 1:1000 incubated at room temperature for 1.5 hours.