

For Research Use Only

# COX4I2 Polyclonal antibody, PBS Only

Catalog Number: 11463-1-PBS

Featured Product



## Basic Information

Catalog Number:

11463-1-PBS

Concentration:

1 mg/ml

Source:

Rabbit

Isotype:

IgG

Immunogen Catalog Number:

AG1987

GenBank Accession Number:

BC057779

GeneID (NCBI):

84701

UNIPROT ID:

Q96KJ9

Full Name:

cytochrome c oxidase subunit IV  
isoform 2 (lung)

Calculated MW:

171 aa, 20 kDa

Observed MW:

17-18 kDa

Purification Method:

Antigen affinity purification

## Applications

Tested Applications:

WB, IHC, IF/ICC, IP, Indirect ELISA

Species Specificity:

human, mouse, rat

## Background Information

COX4I2, also named as COX4L2 and COXIV-2, belongs to the cytochrome c oxidase IV family. It is one of the nuclear-coded polypeptide chains of cytochrome c oxidase, the terminal oxidase in mitochondrial electron transport. COXIV(cytochrome c oxidase IV) has two isoforms (isoform 1 and 2). Isoform 1(COX4I1) is ubiquitously expressed and isoform 2 is highly expressed in lung tissues. This antibody was generated against full length COX4I2 protein.

## Storage

Storage:

Store at -80°C.

The product is shipped with ice packs. Upon receipt, store it immediately at -80°C

Storage Buffer:

PBS Only

For technical support and original validation data for this product please contact:

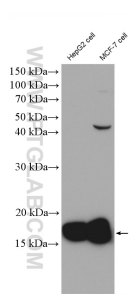
T: 4006900926

E: [Proteintech-CN@ptglab.com](mailto:Proteintech-CN@ptglab.com)

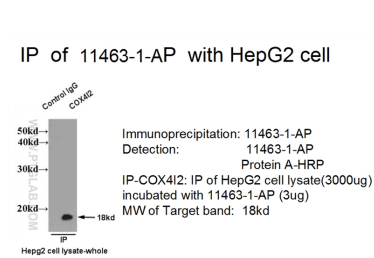
W: [ptgcn.com](http://ptgcn.com)

This product is exclusively available under Proteintech Group brand and is not available to purchase from any other manufacturer.

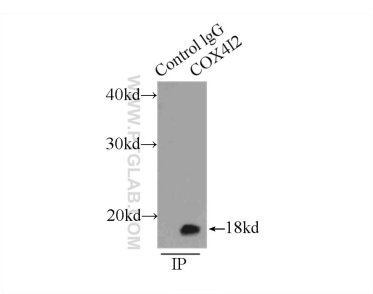
Selected Validation Data



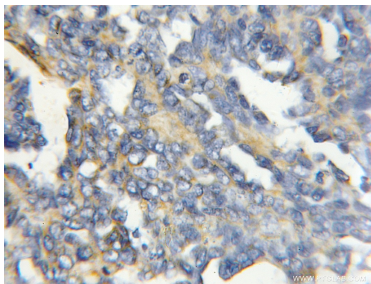
Various lysates were subjected to SDS PAGE followed by western blot with 11463-1-AP (COX4l2 antibody) at dilution of 1:1500 incubated at 4 degree celsius over night. This data was developed using the same antibody clone with 11463-1-PBS in a different storage buffer formulation.



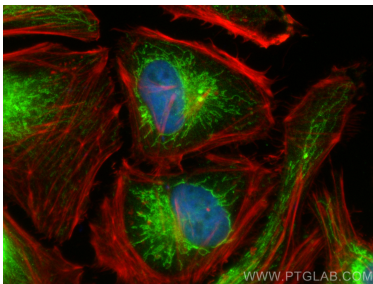
IP result of anti-COX4l2 (11463-1-AP for IP and Detection) with HepG2 cell lysate. This data was developed using the same antibody clone with 11463-1-PBS in a different storage buffer formulation.



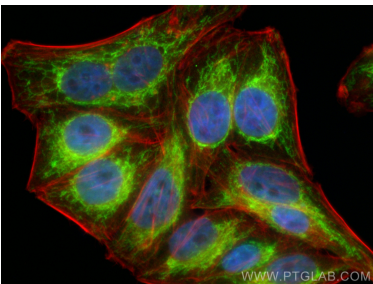
IP result of anti-COX4l2 (IP:11463-1-AP, 3ug; Detection:11463-1-AP 1:1000) with HepG2 cells lysate 8000ug. This data was developed using the same antibody clone with 11463-1-PBS in a different storage buffer formulation.



Immunohistochemical analysis of paraffin-embedded human ovary tumor using 11463-1-AP (COX4l2 antibody) at dilution of 1:50 (under 10x lens). This data was developed using the same antibody clone with 11463-1-PBS in a different storage buffer formulation.



Immunofluorescent analysis of (4% PFA) fixed HeLa cells using COX4l2 antibody (11463-1-AP) at dilution of 1:400 and CoraLite@488-Conjugated Goat Anti-Rabbit IgG(H+L) (SA00013-2), CL594-phalloidin (red). This data was developed using the same antibody clone with 11463-1-PBS in a different storage buffer formulation.



Immunofluorescent analysis of (4% PFA) fixed HepG2 cells using COX4l2 antibody (11463-1-AP) at dilution of 1:400 and CoraLite@488-Conjugated Goat Anti-Rabbit IgG(H+L) (SA00013-2), CL594-phalloidin (red). This data was developed using the same antibody clone with 11463-1-PBS in a different storage buffer formulation.