

For Research Use Only

# SKIV2L Polyclonal antibody

Catalog Number: 11462-1-AP

Featured Product

11 Publications



## Basic Information

**Catalog Number:**

11462-1-AP

**Size:**

850 µg/ml

**Source:**

Rabbit

**Isotype:**

IgG

**Immunogen Catalog Number:**

AG1977

**GenBank Accession Number:**

BC015758

**GeneID (NCBI):**

6499

**UNIPROT ID:**

Q15477

**Full Name:**

superkiller viralicidic activity 2-like  
(S. cerevisiae)

**Calculated MW:**

1246 aa, 138 kDa

**Observed MW:**

138 kDa

**Purification Method:**

Antigen affinity purification

**Recommended Dilutions:**

WB 1:1000-1:8000

IP 0.5-4.0 µg for 1.0-3.0 mg of total protein lysate

## Applications

**Tested Applications:**

IP, WB, ELISA

**Cited Applications:**

IF, IHC, WB

**Species Specificity:**

human

**Cited Species:**

human

**Positive Controls:**

WB : HEK-293 cells, COLO 320 cells, human kidney tissue, HepG2 cells, Jurkat cells

IP : HepG2 cells,

## Background Information

The Ski complex is a multiprotein complex required for exosome-mediated RNA surveillance, including the regulation of normal mRNA and the decay of nonfunctional mRNA. Component of the SKI complex which is thought to be involved in exosome-mediated RNA decay and associates with transcriptionally active genes in a manner dependent on PAF1 complex (PAF1C) [PMID:22444670]. SKIV2L, one component of the Ski complex, acts as an RNA helicase with a role in exosome recruitment or activation. It is involved in the degradation of RNAs by the exosome and may have a role in autophagy [PMID:11719186].

## Notable Publications

Author	Pubmed ID	Journal	Application
Katarzyna Kalisiak	27679475	Nucleic Acids Res	WB
Katarzyna Kalisiak	28204585	Nucleic Acids Res	WB
Stuart Weston	33184176	Proc Natl Acad Sci U S A	WB

## Storage

**Storage:**

Store at -20°C. Stable for one year after shipment.

**Storage Buffer:**

PBS with 0.02% sodium azide and 50% glycerol pH 7.3.

Aliquoting is unnecessary for -20°C storage

For technical support and original validation data for this product please contact:

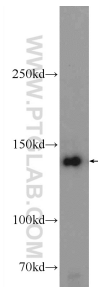
T: 4006900926

E: Proteintech-CN@ptglab.com

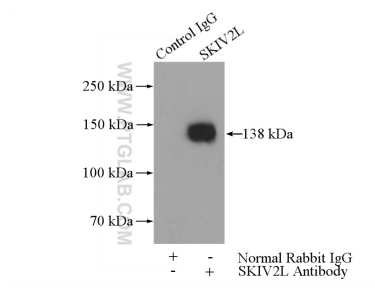
W: ptgcn.com

This product is exclusively available under Proteintech Group brand and is not available to purchase from any other manufacturer.

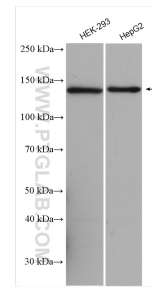
## Selected Validation Data



HEK-293 cells were subjected to SDS PAGE followed by western blot with 11462-1-AP (SKIV2L Antibody) at dilution of 1:600 incubated at room temperature for 1.5 hours.



IP result of anti-SKIV2L (IP:11462-1-AP, 4ug; Detection:11462-1-AP 1:600) with HepG2 cells lysate 3200ug.



Various lysates were subjected to SDS PAGE followed by western blot with 11462-1-AP (SKIV2L antibody) at dilution of 1:4000 incubated at room temperature for 1.5 hours.