

For Research Use Only

# COX6A1 Polyclonal antibody

Catalog Number: 11460-1-AP

Featured Product

14 Publications



## Basic Information

### Catalog Number:

11460-1-AP

### Concentration:

350 ug/ml

### Source:

Rabbit

### Isotype:

IgG

### Immunogen Catalog Number:

AG2006

### GenBank Accession Number:

BC007723

### GeneID (NCBI):

1337

### UNIPROT ID:

P12074

### Full Name:

cytochrome c oxidase subunit VIa

polypeptide 1

### Calculated MW:

85 aa, 9 kDa

### Observed MW:

9.5 kDa

### Purification Method:

Antigen affinity purification

### Recommended Dilutions:

WB 1:2000-1:12000

IHC 1:50-1:500

IF/ICC 1:50-1:500

## Applications

### Tested Applications:

WB, IHC, IF/ICC, ELISA

### Cited Applications:

WB, IF

### Species Specificity:

human, mouse, rat

### Cited Species:

human, mouse, rat, pig

### Positive Controls:

WB : mouse liver tissue, NIH/3T3 cells, rat liver tissue

IHC : human pancreas cancer tissue,

IF/ICC : MCF-7 cells, SH-SY5Y cells

**Note-IHC: suggested antigen retrieval with TE buffer pH 9.0; (\*) Alternatively, antigen retrieval may be performed with citrate buffer pH 6.0**

## Background Information

COX6A1(Cytochrome c oxidase subunit 6A1, mitochondrial) is also named as COX6AL and belongs to the cytochrome c oxidase subunit 6A family. This protein is one of the nuclear-coded polypeptide chains of cytochrome c oxidase, the terminal oxidase in mitochondrial electron transport.

## Notable Publications

Author	Pubmed ID	Journal	Application
Weicheng Wu	30237463	Cell Death Dis	WB
Yilin Kang	31682224	Elife	WB
Nicole M Sayles	35263592	Cell Rep	WB

## Storage

### Storage:

Store at -20°C. Stable for one year after shipment.

### Storage Buffer:

PBS with 0.02% sodium azide and 50% glycerol pH 7.3.

Aliquoting is unnecessary for -20°C storage

For technical support and original validation data for this product please contact:

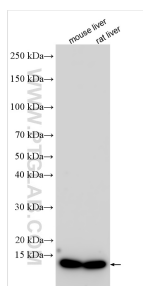
T: 4006900926

E: [Proteintech-CN@ptglab.com](mailto:Proteintech-CN@ptglab.com)

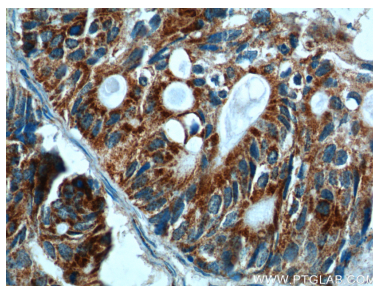
W: [ptgcn.com](http://ptgcn.com)

This product is exclusively available under Proteintech Group brand and is not available to purchase from any other manufacturer.

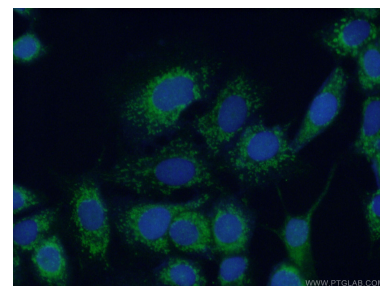
## Selected Validation Data



Various lysates were subjected to SDS PAGE followed by western blot with 11460-1-AP (COX6A1 antibody) at dilution of 1:6000 incubated at room temperature for 1.5 hours.



Immunohistochemical analysis of paraffin-embedded human pancreas cancer tissue slide using 11460-1-AP (COX6A1 Antibody) at dilution of 1:200 (under 40x lens).



Immunofluorescent analysis of (10% Formaldehyde) fixed MCF-7 cells using 11460-1-AP (COX6A1 antibody) at dilution of 1:50 and Alexa Fluor 488-conjugated AffiniPure Goat Anti-Rabbit IgG(H+L).