

For Research Use Only

# S100A16 Polyclonal antibody

Catalog Number: 11456-1-AP

Featured Product

15 Publications



## Basic Information

### Catalog Number:

11456-1-AP

### Concentration:

700 ug/ml

### Source:

Rabbit

### Isotype:

IgG

### Immunogen Catalog Number:

AG2023

### GenBank Accession Number:

BC019099

### GeneID (NCBI):

140576

### UNIPROT ID:

Q96FQ6

### Full Name:

S100 calcium binding protein A16

### Calculated MW:

103 aa, 12 kDa

### Observed MW:

9-12 kDa

### Purification Method:

Antigen affinity purification

### Recommended Dilutions:

WB 1:1000-1:6000

IHC 1:50-1:500

IF/ICC 1:200-1:800

## Applications

### Tested Applications:

WB, IHC, IF/ICC, ELISA

### Cited Applications:

WB, IHC, IF, IP, CoIP

### Species Specificity:

human, mouse

### Cited Species:

human, mouse, rat

**Note-IHC: suggested antigen retrieval with TE buffer pH 9.0; (\*) Alternatively, antigen retrieval may be performed with citrate buffer pH 6.0**

### Positive Controls:

WB : A431 cells, DU 145 cells, MCF-7 cells

IHC : human lung cancer tissue, human bowen disease, human colon cancer tissue, mouse lung tissue

IF/ICC : MCF-7 cells,

## Background Information

S100A16 is a member of the S100 protein family. S100A16 is expressed in a variety of human tissues. S100A16 expression is especially high in tissues rich in epithelial cells. Functionally, S100A16 has been linked to several aspects of tumorigenesis, for example, cell proliferation, differentiation, migration, invasion, and epithelial-mesenchymal transition (EMT). Accordingly, S100A16 has been suggested to have both tumour-promoting and suppressive roles in human cancers. S100A16-mediated cellular functions are suggested to be mediated by the regulation of various signaling pathways/proteins including EMT-related proteins E-cadherin and Vimentin, PI3K-AKT, p53, MMP1-1, MMP-2, MMP-9, JNK/p38, etc. (PMID: 37509106).

## Notable Publications

Author	Pubmed ID	Journal	Application
Xiaoying You	34650982	Front Cell Dev Biol	WB,IP
Sapkota Dipak D	24086685	PLoS One	WB,IHC,IP
Xu Sun	28876468	J Surg Oncol	IHC

## Storage

### Storage:

Store at -20°C. Stable for one year after shipment.

### Storage Buffer:

PBS with 0.02% sodium azide and 50% glycerol pH 7.3.

Aliquoting is unnecessary for -20°C storage

For technical support and original validation data for this product please contact:

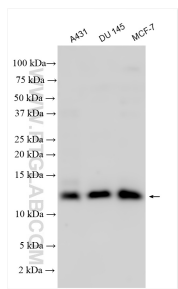
T: 4006900926

E: Proteintech-CN@ptglab.com

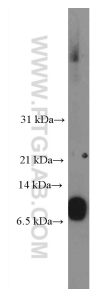
W: ptgcn.com

**This product is exclusively available under Proteintech Group brand and is not available to purchase from any other manufacturer.**

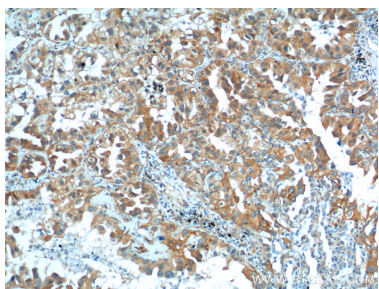
Selected Validation Data



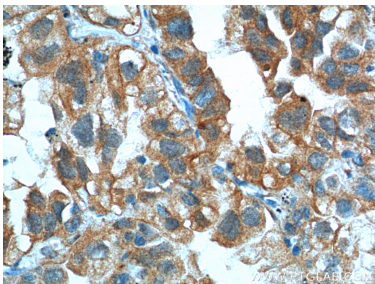
Various lysates were subjected to SDS PAGE followed by western blot with 11456-1-AP (S100A16 antibody) at dilution of 1:3000 incubated at room temperature for 1.5 hours.



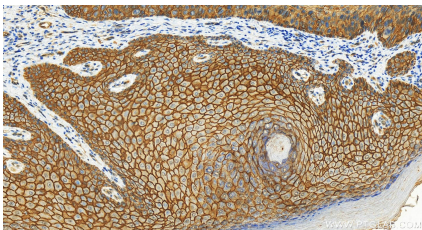
A431 cells were subjected to SDS PAGE followed by western blot with 11456-1-AP (S100A16 Antibody) at dilution of 1:600 incubated at room temperature for 1.5 hours.



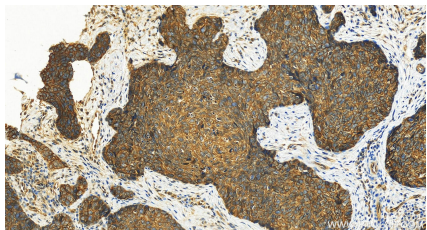
Immunohistochemical analysis of paraffin-embedded human lung cancer tissue slide using 11456-1-AP (S100A16 Antibody) at dilution of 1:200 (under 10x lens).



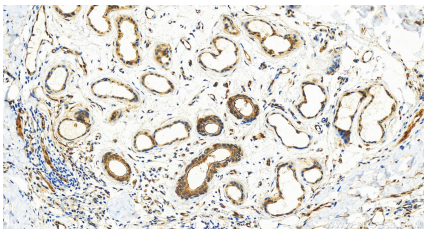
Immunohistochemical analysis of paraffin-embedded human lung cancer tissue slide using 11456-1-AP (S100A16 Antibody) at dilution of 1:200 (under 40x lens).



Immunohistochemical analysis of paraffin-embedded human bowen disease slide using 11456-1-AP (S100A16 antibody) at dilution of 1:600 (under 20x lens). Heat mediated antigen retrieval with Tris-EDTA buffer (pH 9.0).



Immunohistochemical analysis of paraffin-embedded human bowen disease slide using 11456-1-AP (S100A16 antibody) at dilution of 1:600 (under 20x lens). Heat mediated antigen retrieval with Tris-EDTA buffer (pH 9.0).



Immunohistochemical analysis of paraffin-embedded human bowen disease slide using 11456-1-AP (S100A16 antibody) at dilution of 1:600 (under 20x lens). Heat mediated antigen retrieval with Tris-EDTA buffer (pH 9.0).



Immunofluorescent analysis of (4% PFA) fixed MCF-7 cells using S100A16 antibody (11456-1-AP) at dilution of 1:400 and CoraLite®488-Conjugated Goat Anti-Rabbit IgG(H+L).