

For Research Use Only

Human IgA Heavy Chain Polyclonal antibody



Catalog Number: 11449-1-AP **9 Publications**

Basic Information

Catalog Number: 11449-1-AP	GenBank Accession Number: BC016369	Purification Method: Antigen affinity purification
Size: 850 µg/ml	GeneID (NCBI): 3493	Recommended Dilutions: WB 1:500-1:2000 IHC 1:5000-1:20000 IF 1:200-1:800
Source: Rabbit	Full Name: immunoglobulin heavy constant alpha 1	
Isotype: IgG	Calculated MW: 496 aa, 53 kDa	
Immunogen Catalog Number: AG2007	Observed MW: 53 kDa	

Applications

Tested Applications: IF-P, IHC, WB, ELISA	Positive Controls: WB : human plasma tissue, human lung tissue IHC : human tonsillitis tissue, IF : human tonsillitis tissue,
Cited Applications: WB, IHC, IF	
Species Specificity: human	
Cited Species: human, mouse, pig	

Note-IHC: suggested antigen retrieval with TE buffer pH 9.0; (*) Alternatively, antigen retrieval may be performed with citrate buffer pH 6.0

Background Information

Ig alpha is the major immunoglobulin class in body secretions. It may serve both to defend against local infection and to prevent access of foreign antigens to the general immunologic system. This antibody recognizes the Chain C region of human Ig alpha-1 (IGHA1).

Notable Publications

Author	Pubmed ID	Journal	Application
Airu Liu	36118029	Front Cell Infect Microbiol	IHC
Yan Yan	33188798	J Infect	IHC
Anne Kathrin Wessig	35296708	Sci Rep	WB

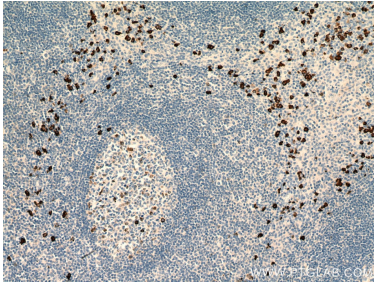
Storage

Storage:
Store at -20°C. Stable for one year after shipment.
Storage Buffer:
PBS with 0.02% sodium azide and 50% glycerol pH 7.3.
Aliquoting is unnecessary for -20°C storage

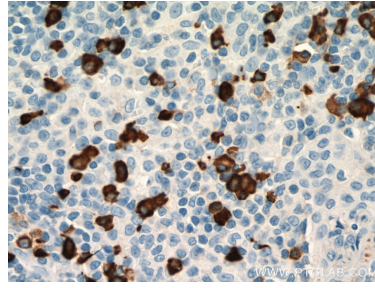
For technical support and original validation data for this product please contact:
T: 4006900926 E: Proteintech-CN@ptglab.com W: ptgcn.com

This product is exclusively available under Proteintech Group brand and is not available to purchase from any other manufacturer.

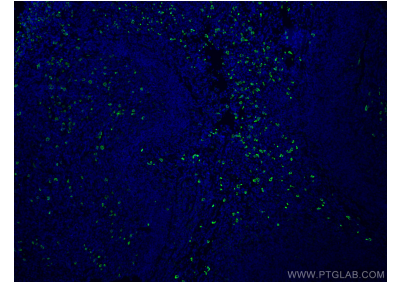
Selected Validation Data



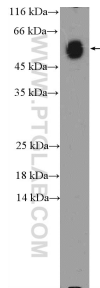
Immunohistochemical analysis of paraffin-embedded human tonsillitis tissue slide using 11449-1-AP (Human IgA Heavy Chain antibody) at dilution of 1:10000 (under 10x lens. Heat mediated antigen retrieval with Tris-EDTA buffer (pH 9.0).



Immunohistochemical analysis of paraffin-embedded human tonsillitis tissue slide using 11449-1-AP (Human IgA Heavy Chain antibody) at dilution of 1:10000 (under 40x lens. Heat mediated antigen retrieval with Tris-EDTA buffer (pH 9.0).



Immunofluorescent analysis of (4% PFA) fixed human tonsillitis tissue using Human IgA Heavy Chain antibody (11449-1-AP) at dilution of 1:400 and CoraLite®488-Conjugated AffiniPure Goat Anti-Rabbit IgG(H+L).



human plasma (0.3 ug) were subjected to SDS PAGE followed by western blot with 11449-1-AP (Human IgA Heavy Chain antibody) at dilution of 1:1000. (1 Sec exposure) incubated at room temperature for 1.5 hours.