

For Research Use Only

GRK6 Polyclonal antibody

Catalog Number: 11439-1-AP

Featured Product

2 Publications



Basic Information

Catalog Number:

11439-1-AP

Size:

200 µg/ml

Source:

Rabbit

Isotype:

IgG

Immunogen Catalog Number:

AG1992

GenBank Accession Number:

BC017272

GeneID (NCBI):

2870

UNIPROT ID:

P43250

Full Name:

G protein-coupled receptor kinase 6

Calculated MW:

66 kDa

Observed MW:

66 kDa

Purification Method:

Antigen affinity purification

Recommended Dilutions:

WB 1:500-1:2000

IP 0.5-4.0 µg for 1.0-3.0 mg of total protein lysate

IHC 1:50-1:500

Applications

Tested Applications:

IHC, IP, WB, ELISA

Cited Applications:

WB, IHC

Species Specificity:

human

Cited Species:

human

Note-IHC: suggested antigen retrieval with TE buffer pH 9.0; (*) Alternatively, antigen retrieval may be performed with citrate buffer pH 6.0

Positive Controls:

WB : HEK-293 cells, human kidney tissue

IP : HEK-293 cells,

IHC : human renal cell carcinoma tissue,

Background Information

Notable Publications

Author	Pubmed ID	Journal	Application
Fan Yang	26347956	Nat Commun	WB
Sumei Yao	34136390	Front Oncol	WB, IHC

Storage

Storage:

Store at -20°C. Stable for one year after shipment.

Storage Buffer:

PBS with 0.02% sodium azide and 50% glycerol pH 7.3.

Aliquoting is unnecessary for -20°C storage

For technical support and original validation data for this product please contact:

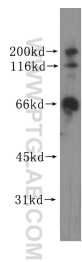
T: 4006900926

E: Proteintech-CN@ptglab.com

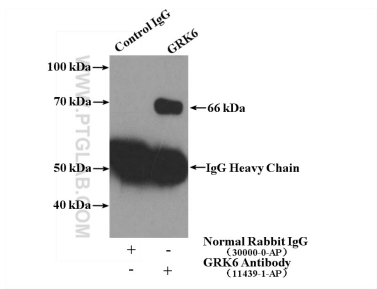
W: ptgcn.com

This product is exclusively available under Proteintech Group brand and is not available to purchase from any other manufacturer.

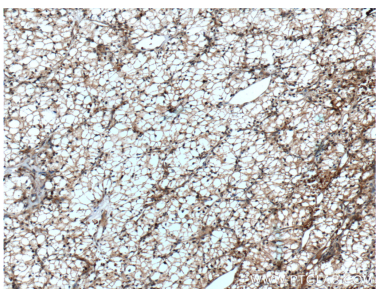
Selected Validation Data



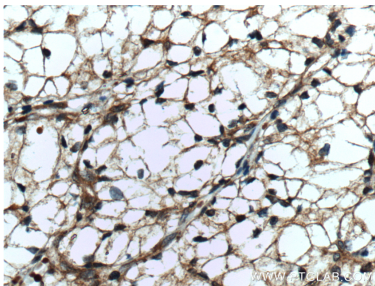
HEK-293 cells were subjected to SDS PAGE followed by western blot with 11439-1-AP (GRK6 antibody) at dilution of 1:500 incubated at room temperature for 1.5 hours.



IP result of anti-GRK6 (IP:11439-1-AP, 4ug; Detection:11439-1-AP 1:500) with HEK-293 cells lysate 1120ug.



Immunohistochemical analysis of paraffin-embedded human renal cell carcinoma tissue slide using 11439-1-AP (GRK6 Antibody) at dilution of 1:100 (under 10x lens). Heat mediated antigen retrieval with Tris-EDTA buffer (pH 9.0).



Immunohistochemical analysis of paraffin-embedded human renal cell carcinoma tissue slide using 11439-1-AP (GRK6 Antibody) at dilution of 1:100 (under 40x lens). Heat mediated antigen retrieval with Tris-EDTA buffer (pH 9.0).