

For Research Use Only

HAT1 Polyclonal antibody

Catalog Number: 11432-1-AP

Featured Product

9 Publications



Basic Information

Catalog Number:

11432-1-AP

Size:

600 µg/ml

Source:

Rabbit

Isotype:

IgG

Immunogen Catalog Number:

AG1952

GenBank Accession Number:

BC018682

GeneID (NCBI):

8520

UNIPROT ID:

O14929

Full Name:

histone acetyltransferase 1

Calculated MW:

419 aa, 50 kDa

Observed MW:

46 kDa

Purification Method:

Antigen affinity purification

Recommended Dilutions:

WB 1:1000-1:8000

IP 0.5-4.0 µg for 1.0-3.0 mg of total protein lysate

IHC 1:20-1:200

IF 1:50-1:500

Applications

Tested Applications:

IF/ICC, IF-P, IHC, IP, WB, ELISA

Cited Applications:

WB, IF, IHC

Species Specificity:

human, mouse, rat

Cited Species:

human, rat, mouse

Note-IHC: suggested antigen retrieval with **TE buffer pH 9.0**; (*) Alternatively, antigen retrieval may be performed with **citrate buffer pH 6.0**

Positive Controls:

WB: HeLa cells, HEK-293 cells, MDA-MB-231 cells, NIH/3T3 cells, C6 cells

IP: HepG2 cells,

IHC: human lymphoma tissue,

IF: mouse ovary tissue, HepG2 cells

Background Information

Notable Publications

Author	Pubmed ID	Journal	Application
Yan Sun	34564701	Cell Death Dis	WB
Yong-Wei Nie	27005820	Biochem Biophys Res Commun	IF
Minjie Chen	33662521	Alcohol	WB

Storage

Storage:

Store at -20°C. Stable for one year after shipment.

Storage Buffer:

PBS with 0.02% sodium azide and 50% glycerol pH 7.3.

Aliquoting is unnecessary for -20°C storage

For technical support and original validation data for this product please contact:

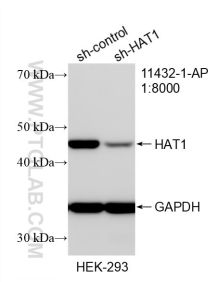
T: 4006900926

E: Proteintech-CN@ptglab.com

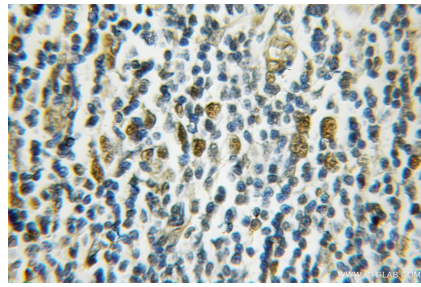
W: ptgcn.com

This product is exclusively available under Proteintech Group brand and is not available to purchase from any other manufacturer.

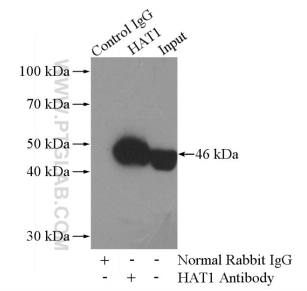
Selected Validation Data



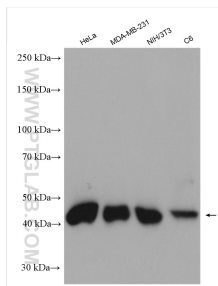
WB result of HAT1 antibody (11432-1-AP; 1:8000; incubated at room temperature for 1.5 hours) with sh-Control and sh-HAT1 transfected HEK-293 cells.



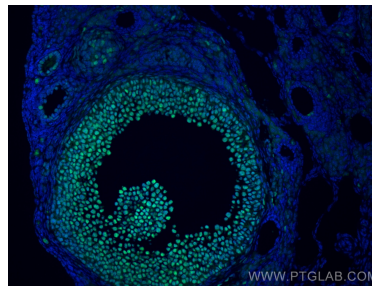
Immunohistochemical analysis of paraffin-embedded human lymphoma using 11432-1-AP (HAT1 antibody) at dilution of 1:50 (under 10x lens).



IP result of anti-HAT1 (IP:11432-1-AP, 4ug; Detection:11432-1-AP 1:500) with HepG2 cells lysate 3200ug.



Various lysates were subjected to SDS PAGE followed by western blot with 11432-1-AP (HAT1 antibody) at dilution of 1:4000 incubated at room temperature for 1.5 hours.



Immunofluorescent analysis of (4% PFA) fixed mouse ovary tissue using HAT1 antibody (11432-1-AP) at dilution of 1:200 and CoraLite®488-Conjugated AffiniPure Goat Anti-Rabbit IgG(H+L).