

For Research Use Only

EIF3M Polyclonal antibody

Catalog Number: 11423-1-AP

Featured Product

5 Publications



Basic Information

Catalog Number:

11423-1-AP

Concentration:

200 ug/ml

Source:

Rabbit

Isotype:

IgG

Immunogen Catalog Number:

AG1994

GenBank Accession Number:

BC019103

GeneID (NCBI):

10480

UNIPROT ID:

Q7L2H7

Full Name:

eukaryotic translation initiation factor 3, subunit M

Calculated MW:

374 aa, 43 kDa

Observed MW:

35-43 kDa

Purification Method:

Antigen affinity purification

Recommended Dilutions:

WB 1:500-1:3000

IP 0.5-4.0 ug for 1.0-3.0 mg of total protein lysate

IHC 1:20-1:200

IF/ICC 1:200-1:800

Applications

Tested Applications:

WB, IHC, IF/ICC, IP, ELISA

Cited Applications:

WB, IHC, IF, CoIP

Species Specificity:

human, mouse, rat

Cited Species:

human

Note-IHC: suggested antigen retrieval with TE buffer pH 9.0; (*) Alternatively, antigen retrieval may be performed with citrate buffer pH 6.0

Positive Controls:

WB : HeLa cells, HepG2 cells, MCF-7 cells, mouse brain tissue, rat brain tissue

IP : HeLa cells,

IHC : human pancreas cancer tissue,

IF/ICC : A431 cells,

Background Information

EIF3M gene encodes eukaryotic translation initiation factor (eIF) subunit M, also called GA17 or PCID1. eIF-3 complex is required for several steps in the initiation of protein synthesis, and recent studies indicate that regulation of oncogene expression and neoplastic transformation are controlled by eIF subunits. The most uncharacterized non-core subunit EIF3M was confirmed to be highly expressed in human cancer cell lines and colon cancer patient tissues and mediate regulation of tumorigenesis-related genes in human colon cancer.

Notable Publications

Author	Pubmed ID	Journal	Application
Chen Chen	34499080	J Cell Biol	WB
Xinwei Liu	33791168	Am J Cancer Res	IF, CoIP
Goh S-H SH	20838379	Oncogene	WB, IHC

Storage

Storage:

Store at -20°C. Stable for one year after shipment.

Storage Buffer:

PBS with 0.02% sodium azide and 50% glycerol pH 7.3.

Aliquoting is unnecessary for -20°C storage

For technical support and original validation data for this product please contact:

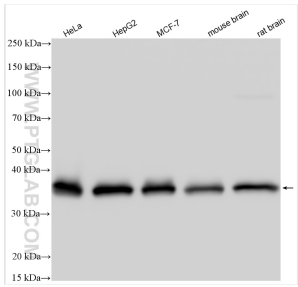
T: 4006900926

E: Proteintech-CN@ptglab.com

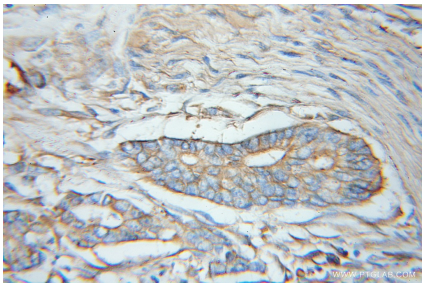
W: ptgcn.com

This product is exclusively available under Proteintech Group brand and is not available to purchase from any other manufacturer.

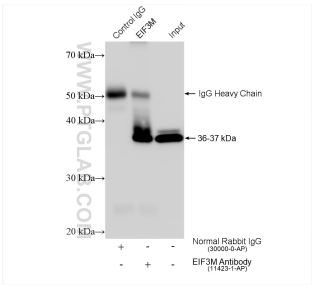
Selected Validation Data



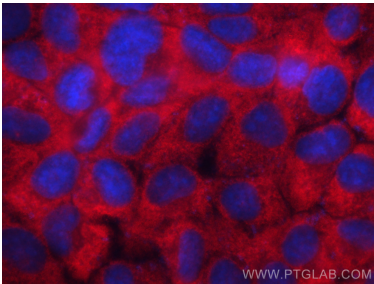
Various lysates were subjected to SDS PAGE followed by western blot with 11423-1-AP (EIF3M antibody) at dilution of 1:1500 incubated at room temperature for 1.5 hours.



Immunohistochemical analysis of paraffin-embedded human pancreas cancer using 11423-1-AP (EIF3M antibody) at dilution of 1:50 (under 10x lens).



IP result of anti-EIF3M (IP:11423-1-AP, 4ug; Detection:11423-1-AP 1:2000) with HeLa cells lysate 1080 ug.



Immunofluorescent analysis of (-20°C Methanol) fixed A431 cells using EIF3M antibody (11423-1-AP) at dilution of 1:400 and CoraLite®594-Conjugated Goat Anti-Rabbit IgG(H+L) (SA00013-4).