

For Research Use Only

COX7A2L Polyclonal antibody, PBS Only

Catalog Number: 11416-1-PBS

Featured Product



Basic Information

Catalog Number:

11416-1-PBS

Concentration:

1 mg/ml

Source:

Rabbit

Isotype:

IgG

Immunogen Catalog Number:

AG1980

GenBank Accession Number:

BC007095

GeneID (NCBI):

9167

UNIPROT ID:

O14548

Full Name:

cytochrome c oxidase subunit VIIa polypeptide 2 like

Calculated MW:

114 aa, 13 kDa

Observed MW:

14 kDa

Purification Method:

Antigen affinity purification

Applications

Tested Applications:

WB, IHC, Indirect ELISA

Species Specificity:

human, mouse, rat

Background Information

Cytochrome c oxidase (COX) is the terminal component of the mitochondrial respiratory chain, catalyzes the electron transfer from reduced cytochrome c to oxygen. The mitochondrially encoded subunits function in electron transfer, and the nuclear encoded subunits may function in the regulation and assembly of the complex. COX7A2L (cytochrome c oxidase subunit 7A-related protein), also known as COX7AR or COX7RP, is an inner mitochondrial membrane protein. This gene is expressed in all tissues, and upregulated in a breast cancer cell line after estrogen treatment. Recently it was found that DNA methylation of COX7A2L had a significant association with therapy response in patients with breast cancer. In Alzheimer's disease the expression of COX7A2L was reduced.

Storage

Storage:

Store at -80°C.

The product is shipped with ice packs. Upon receipt, store it immediately at -80°C

Storage Buffer:

PBS only, pH7.3

For technical support and original validation data for this product please contact:

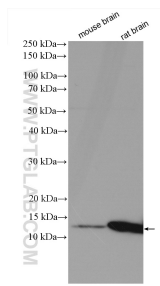
T: 4006900926

E: Proteintech-CN@ptglab.com

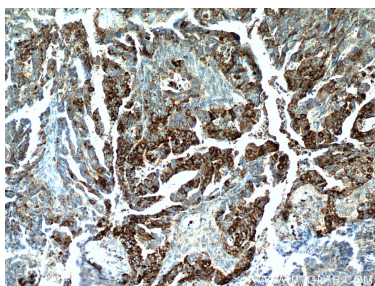
W: ptgcn.com

This product is exclusively available under Proteintech Group brand and is not available to purchase from any other manufacturer.

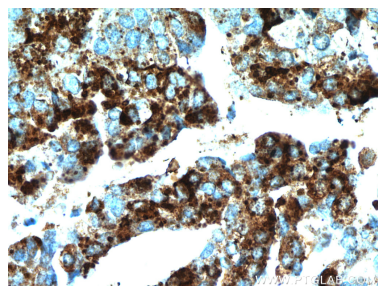
Selected Validation Data



Various lysates were subjected to SDS PAGE followed by western blot with 11416-1-AP (COX7A2L antibody) at dilution of 1:1000 incubated at room temperature for 1.5 hours. This data was developed using the same antibody clone with 11416-1-PBS in a different storage buffer formulation.



Immunohistochemical analysis of paraffin-embedded human ovary tumor using 11416-1-AP (COX7A2L antibody) at dilution of 1:50 (under 10x lens). This data was developed using the same antibody clone with 11416-1-PBS in a different storage buffer formulation.



Immunohistochemical analysis of paraffin-embedded human ovary tumor using 11416-1-AP (COX7A2L antibody) at dilution of 1:50 (under 40x lens). This data was developed using the same antibody clone with 11416-1-PBS in a different storage buffer formulation.