

NAT2 Polyclonal antibody

Catalog Number: 11410-1-AP

Basic Information

Catalog Number:

11410-1-AP

Size:

500 µg/ml

Source:

Rabbit

Isotype:

IgG

Immunogen Catalog Number:

AG1953

GenBank Accession Number:

BC015878

GeneID (NCBI):

10

UNIPROT ID:

P11245

Full Name:

N-acetyltransferase 2 (arylamine N-acetyltransferase)

Calculated MW:

33.5 kDa

Observed MW:

38 kDa

Purification Method:

Antigen affinity purification

Recommended Dilutions:

WB 1:2000-1:12000

IHC 1:50-1:500

Applications

Tested Applications:

WB, IHC, ELISA

Species Specificity:

human, mouse, rat

Note-IHC: suggested antigen retrieval with TE buffer pH 9.0; (*) Alternatively, antigen retrieval may be performed with citrate buffer pH 6.0

Positive Controls:

WB : rat liver tissue,

IHC : human small intestine tissue, human breast cancer tissue

Background Information

NAT2 (Arylamine N-acetyltransferase 2) is well-known for its role in phase II metabolism of xenobiotics and drugs (PMID:36156098). NAT2 and its isozyme, arylamine N-acetyltransferase 1 (NAT1), play key roles in the detoxification of carcinogenic arylamines and xenobiotics by catalyzing acetyl-coenzyme A (CoA)-dependent biotransformation of arylamines to N-arylacetamides. Endogenous NAT2 expression is limited to the liver and small and large intestines, suggesting that NAT2 plays organ-specific roles (PMID:24467436).

Storage

Storage:

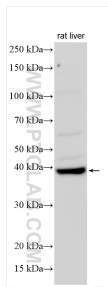
Store at -20°C. Stable for one year after shipment.

Storage Buffer:

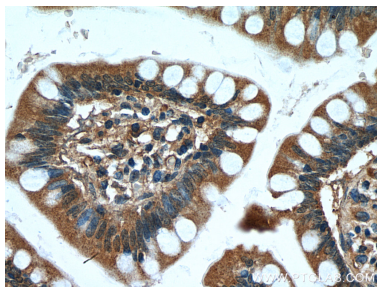
PBS with 0.02% sodium azide and 50% glycerol pH 7.3.

Aliquoting is unnecessary for -20°C storage

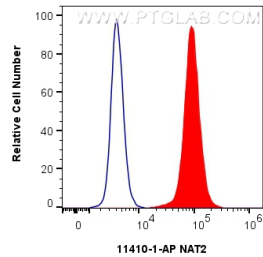
Selected Validation Data



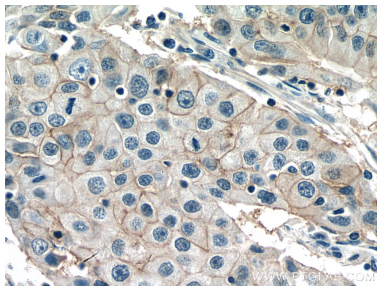
Various lysates were subjected to SDS PAGE followed by western blot with 11410-1-AP (NAT2 antibody) at dilution of 1:6000 incubated at room temperature for 1.5 hours.



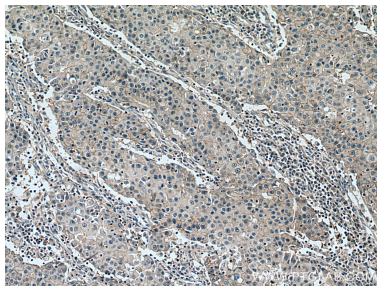
Immunohistochemical analysis of paraffin-embedded human small intestine tissue slide using 11410-1-AP (NAT2 antibody) at dilution of 1:200 (under 40x lens).



1x10⁶ MCF-7 cells were intracellularly stained with 0.8 ug NAT2 Polyclonal antibody (11410-1-AP) and CoraLite®488-Conjugated AffiniPure Goat Anti-Rabbit IgG(H+L) (SA00013-2)(red), or 0.8 ug Rabbit IgG control Rabbit PolyAb (30000-0-AP) (blue). Cells were fixed with 4% PFA and permeabilized with Flow Cytometry Perm Buffer (PF00011-C).



Immunohistochemical analysis of paraffin-embedded human breast cancer tissue slide using 11410-1-AP (NAT2 antibody) at dilution of 1:200 (under 40x lens). Heat mediated antigen retrieval with Tris-EDTA buffer (pH 9.0).



Immunohistochemical analysis of paraffin-embedded human breast cancer tissue slide using 11410-1-AP (NAT2 antibody) at dilution of 1:200 (under 10x lens). Heat mediated antigen retrieval with Tris-EDTA buffer (pH 9.0).