

For Research Use Only

XPO6 Polyclonal antibody

Catalog Number: 11408-1-AP

Featured Product

7 Publications



Basic Information

Catalog Number:

11408-1-AP

Size:

450 µg/ml

Source:

Rabbit

Isotype:

IgG

Immunogen Catalog Number:

AG1898

GenBank Accession Number:

BC014071

GeneID (NCBI):

23214

UNIPROT ID:

Q96QU8

Full Name:

exportin 6

Calculated MW:

1125 aa, 129 kDa

Observed MW:

128 kDa

Purification Method:

Antigen affinity purification

Recommended Dilutions:

WB 1:500-1:1000

IP 0.5-4.0 µg for 1.0-3.0 mg of total protein lysate

IHC 1:50-1:500

Applications

Tested Applications:

IHC, IP, WB, ELISA

Cited Applications:

WB, IF

Species Specificity:

human, mouse, rat

Cited Species:

Drosophila, human

Note-IHC: suggested antigen retrieval with TE buffer pH 9.0; (*) Alternatively, antigen retrieval may be performed with citrate buffer pH 6.0

Positive Controls:

WB : HeLa cells,

IP : HeLa cells,

IHC : human heart tissue, human kidney tissue, human ovary tissue, human placenta tissue, human skin tissue

Background Information

Human XPO6 gene encodes a Ran-binding protein 20, exportin-6, belonging to the exportin family. Exportin-6 shuttles between the nucleus and the cytoplasm and mediates the nuclear export of actin and profilin-actin complexes in somatic cells. Interaction of exportin-6 and actin is achieved in a RanGTP-dependent manner, actin is a major cytoskeletal element which is normally kept cytoplasmic by exportin-6 driven nuclear export.

Notable Publications

Author	Pubmed ID	Journal	Application
Ewan K S McRae	31653714	RNA	WB
Hugo Boruchowicz	32817212	J Virol	WB
Sergi Marco	34819513	Nat Commun	WB

Storage

Storage:

Store at -20°C. Stable for one year after shipment.

Storage Buffer:

PBS with 0.02% sodium azide and 50% glycerol pH 7.3.

Aliquoting is unnecessary for -20°C storage

For technical support and original validation data for this product please contact:

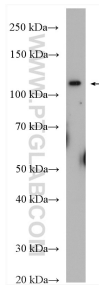
T: 4006900926

E: Proteintech-CN@ptglab.com

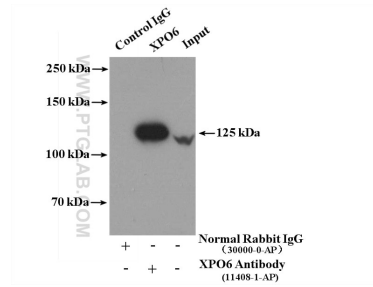
W: ptgcn.com

This product is exclusively available under Proteintech Group brand and is not available to purchase from any other manufacturer.

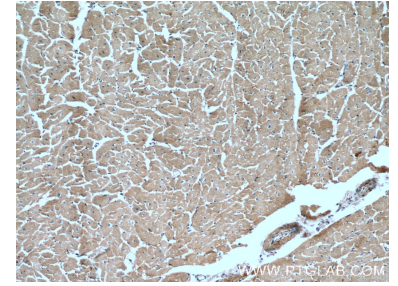
Selected Validation Data



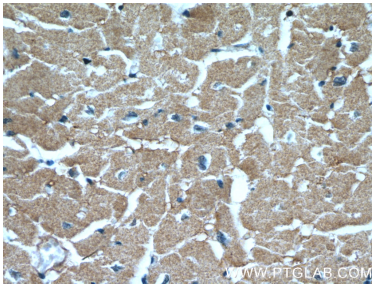
HeLa cells were subjected to SDS PAGE followed by western blot with 11408-1-AP (XPO6 antibody) at dilution of 1:600 incubated at room temperature for 1.5 hours.



IP result of anti-XPO6 (IP:11408-1-AP, 4 μ g; Detection:11408-1-AP 1:300) with HeLa cells lysate 4000 μ g.



Immunohistochemical analysis of paraffin-embedded human heart tissue slide using 11408-1-AP (XPO6 Antibody) at dilution of 1:200 (under 10x lens).



Immunohistochemical analysis of paraffin-embedded human heart tissue slide using 11408-1-AP (XPO6 Antibody) at dilution of 1:200 (under 40x lens).