

For Research Use Only

# Alpha Adaptin Polyclonal antibody

Catalog Number: 11401-1-AP **10 Publications**



## Basic Information

|  |  |   |
|--|--|---|
| <b>Catalog Number:</b><br>11401-1-AP       | <b>GenBank Accession Number:</b><br>BC014214                               | <b>Purification Method:</b><br>Antigen affinity purification                        |
| <b>Size:</b><br>300 µg/ml                  | <b>GeneID (NCBI):</b><br>160   | <b>Recommended Dilutions:</b><br>WB 1:500-1:3000<br>IHC 1:20-1:200<br>IF 1:50-1:500 |
| <b>Source:</b><br>Rabbit                   | <b>UNIPROT ID:</b><br>O95782   |   |
| <b>Isotype:</b><br>IgG                     | <b>Full Name:</b><br>adaptor-related protein complex 2,<br>alpha 1 subunit |   |
| <b>Immunogen Catalog Number:</b><br>AG1927 | <b>Calculated MW:</b><br>977 aa, 108 kDa                                   |   |
|  | <b>Observed MW:</b><br>108 kDa   |   |

## Applications

**Tested Applications:**  
IF/ICC, IHC, WB, ELISA

**Cited Applications:**  
WB, IF

**Species Specificity:**  
human, mouse, rat

**Cited Species:**  
human

**Note-IHC: suggested antigen retrieval with TE buffer pH 9.0; (\*) Alternatively, antigen retrieval may be performed with citrate buffer pH 6.0**

**Positive Controls:**

**WB:** HEK-293 cells, human heart tissue, human spleen tissue

**IHC:** human ovary tumor tissue,

**IF:** HeLa cells,

## Background Information

AP2A1 encodes adaptor protein complex 2 (AP-2) subunit alpha-1, which is a 100 kDa coated vesicle protein. Adaptor protein (AP) complexes are cytosolic heterotetramers that mediate the sorting of membrane proteins in the secretory and endocytic pathways. AP complexes are involved in the formation of clathrin-coated vesicles (CCVs) by recruiting the scaffold protein, clathrin. AP complexes also play a pivotal role in the cargo selection by recognizing the sorting signals within the cytoplasmic tail of integral membrane proteins. AP-2 is involved in clathrin-dependent endocytosis.

## Notable Publications

| Author          | Pubmed ID | Journal       | Application |
|-----------------|-----------|---------------|-------------|
| Amanda K Purdy  | 25238755  | J Immunol     | WB          |
| Boris Simonetti | 31576058  | Nat Cell Biol | WB          |
| George R Heaton | 32434048  | Neurobiol Dis | WB          |

## Storage

**Storage:**

Store at -20°C. Stable for one year after shipment.

**Storage Buffer:**

PBS with 0.02% sodium azide and 50% glycerol pH 7.3.

Aliquoting is unnecessary for -20°C storage

For technical support and original validation data for this product please contact:

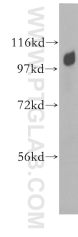
T: 4006900926

E: Proteintech-CN@ptglab.com

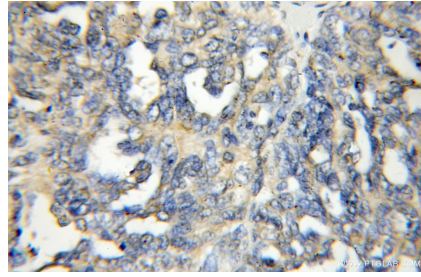
W: ptgcn.com

**This product is exclusively available under Proteintech Group brand and is not available to purchase from any other manufacturer.**

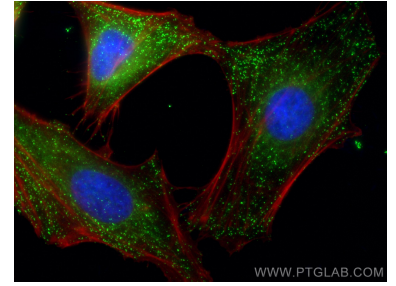
## Selected Validation Data



HEK-293 cells were subjected to SDS PAGE followed by western blot with 11401-1-AP (alpha Adaptin antibody) at dilution of 1:1000 incubated at room temperature for 1.5 hours.



Immunohistochemical analysis of paraffin-embedded human ovary tumor using 11401-1-AP (alpha Adaptin antibody) at dilution of 1:50 (under 10x lens).



Immunofluorescent analysis of (4% PFA) fixed HeLa cells using Alpha Adaptin antibody (11401-1-AP) at dilution of 1:100 and Coralite@488-Conjugated AffiniPure Goat Anti-Rabbit IgG(H+L), CL594-Phalloidin (red).