

# FBF1 Polyclonal antibody

Catalog Number: 11394-1-AP

## Basic Information

**Catalog Number:**

11394-1-AP

**Size:**

850 µg/ml

**Source:**

Rabbit

**Isotype:**

IgG

**Immunogen Catalog Number:**

AG1954

**GenBank Accession Number:**

BC012332

**GeneID (NCBI):**

85302

**UNIPROT ID:**

Q8TES7

**Full Name:**

Fas (TNFRSF6) binding factor 1

**Calculated MW:**

1133 aa, 125 kDa

**Observed MW:**

69-70 kDa

**Purification Method:**

Antigen affinity purification

**Recommended Dilutions:**

WB 1:500-1:2000

IP 0.5-4.0 µg for 1.0-3.0 mg of total protein lysate

## Applications

**Tested Applications:**

IP, WB, ELISA

**Species Specificity:**

human, mouse, rat

**Positive Controls:**

WB : mouse brain tissue,

IP : mouse brain tissue,

## Background Information

FBF1, also named as ALB and KIAA1863, is keratin-binding protein required for epithelial cell polarization. It is involved in apical junction complex (AJC) assembly via its interaction with PARD3. FBF1 is required for ciliogenesis. FBF1 has six isoforms with MW 125-127 kDa, 99 kDa, 69 kDa and 55 kDa. This antibody is induced by the fragment (492-792aa) of FBF1. It recognizes isoform 1, 2, 3, 5 and 6.

## Storage

**Storage:**

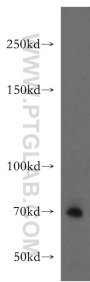
Store at -20°C. Stable for one year after shipment.

**Storage Buffer:**

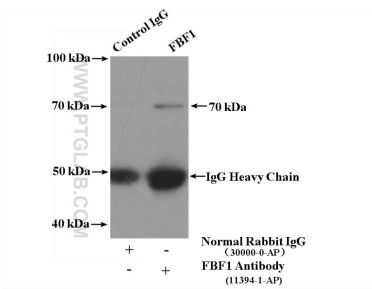
PBS with 0.02% sodium azide and 50% glycerol pH 7.3.

Aliquoting is unnecessary for -20°C storage

## Selected Validation Data



mouse brain tissue were subjected to SDS PAGE followed by western blot with 11394-1-AP (FbF1 antibody) at dilution of 1:400 incubated at room temperature for 1.5 hours.



IP result of anti-FBF1 (IP:11394-1-AP, 4ug;  
Detection:11394-1-AP 1:400) with mouse brain  
tissue lysate 5000ug.