

For Research Use Only

# EPCR/CD201 Polyclonal antibody

Catalog Number: 11391-1-AP

1 Publications



## Basic Information

Catalog Number:

11391-1-AP

Size:

350 ug/ml

Source:

Rabbit

Isotype:

IgG

Immunogen Catalog Number:

AG1937

GenBank Accession Number:

BC014451

GeneID (NCBI):

10544

UNIPROT ID:

Q9UNN8

Full Name:

protein C receptor, endothelial (EPCR)

Calculated MW:

238 aa, 27 kDa

Observed MW:

49 kDa

Purification Method:

Antigen affinity purification

Recommended Dilutions:

WB 1:500-1:1000

IHC 1:50-1:500

## Applications

Tested Applications:

WB, IHC, ELISA

Species Specificity:

human

**Note-IHC: suggested antigen retrieval with TE buffer pH 9.0; (\*) Alternatively, antigen retrieval may be performed with citrate buffer pH 6.0**

Positive Controls:

WB : human spleen tissue,

IHC : human pancreas cancer tissue, human lung cancer tissue

## Background Information

Protein C receptor (PROCR), also known as activated protein C receptor (APC receptor), EPCR, or CD201, is a transmembrane glycoprotein. EPCR promotes the activation of protein C, which has anticoagulant and cytoprotective effects. EPCR facilitates the activation of protein C by the thrombin-thrombomodulin complex but also facilitates APC-mediated cytoprotective effects on cells that involve the activation of protease-activated receptors (PAR) 1 and 3 (PMID: 27207424).

## Notable Publications

Author	Pubmed ID	Journal	Application
Yu Yanyan Y	23752568	Analyst	

## Storage

Storage:

Store at -20°C. Stable for one year after shipment.

Storage Buffer:

PBS with 0.02% sodium azide and 50% glycerol pH 7.3.

Aliquoting is unnecessary for -20°C storage

For technical support and original validation data for this product please contact:

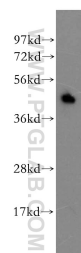
T: 4006900926

E: Proteintech-CN@ptglab.com

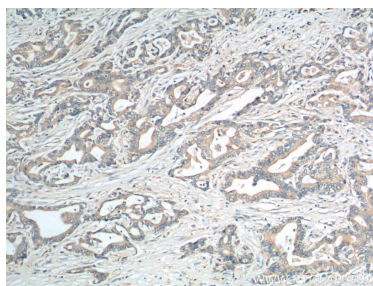
W: ptgcn.com

This product is exclusively available under Proteintech Group brand and is not available to purchase from any other manufacturer.

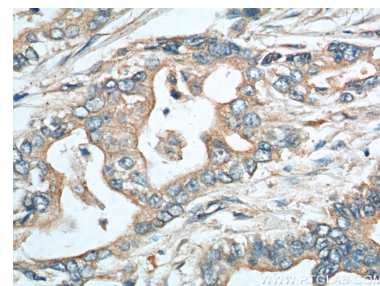
## Selected Validation Data



human spleen tissue were subjected to SDS PAGE followed by western blot with 11391-1-AP (EPCR/CD201 antibody) at dilution of 1:400 incubated at room temperature for 1.5 hours.



Immunohistochemical analysis of paraffin-embedded human pancreas cancer tissue slide using 11391-1-AP (EPCR/CD201 antibody at dilution of 1:100 (under 10x lens).



Immunohistochemical analysis of paraffin-embedded human pancreas cancer tissue slide using 11391-1-AP (EPCR/CD201 antibody at dilution of 1:100 (under 40x lens).