

For Research Use Only

ECH1 Polyclonal antibody

Catalog Number: 11385-1-AP

5 Publications



Basic Information

Catalog Number:

11385-1-AP

Size:

400 µg/ml

Source:

Rabbit

Isotype:

IgG

Immunogen Catalog Number:

AG1931

GenBank Accession Number:

BC017408

GeneID (NCBI):

1891

UNIPROT ID:

Q13011

Full Name:

enoyl Coenzyme A hydratase 1,
peroxisomal

Calculated MW:

328 aa, 36 kDa

Observed MW:

30-36 kDa

Purification Method:

Antigen affinity purification

Recommended Dilutions:

WB 1:500-1:2000

IHC 1:20-1:200

IF 1:10-1:100

Applications

Tested Applications:

IF/ICC, IHC, WB, ELISA

Cited Applications:

WB

Species Specificity:

human, mouse, rat

Cited Species:

mouse

**Note-IHC: suggested antigen retrieval with
TE buffer pH 9.0; (*) Alternatively, antigen
retrieval may be performed with citrate
buffer pH 6.0**

Positive Controls:

WB : mouse liver tissue, HepG2 cells, Jurkat cells, K-
562 cells, L02 cells, mouse heart tissue

IHC : human pancreas cancer tissue,

IF : HepG2 cells,

Background Information

Notable Publications

Author	Pubmed ID	Journal	Application
Miguel A Lanaspá	29533924	J Clin Invest	WB
Yanlu Wang	35300421	Front Cell Dev Biol	WB
Ishimoto Takuji T	23813872	Hepatology	WB

Storage

Storage:

Store at -20°C. Stable for one year after shipment.

Storage Buffer:

PBS with 0.02% sodium azide and 50% glycerol pH 7.3.

Aliquoting is unnecessary for -20°C storage

For technical support and original validation data for this product please contact:

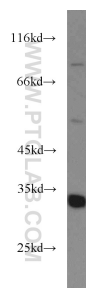
T: 4006900926

E: Proteintech-CN@ptglab.com

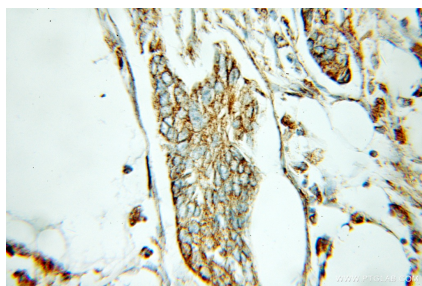
W: ptgcn.com

This product is exclusively available under Proteintech Group brand and is not available to purchase from any other manufacturer.

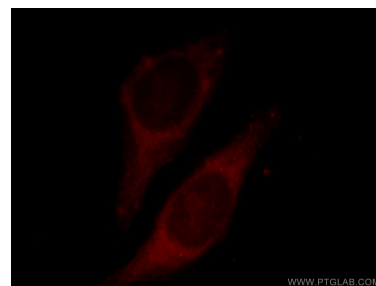
Selected Validation Data



mouse liver tissue were subjected to SDS PAGE followed by western blot with 11385-1-AP (ECH1 antibody) at dilution of 1:500 incubated at room temperature for 1.5 hours.



Immunohistochemical analysis of paraffin-embedded human pancreas cancer using 11385-1-AP (ECH1 antibody) at dilution of 1:100 (under 10x lens).



Immunofluorescent analysis of HepG2 cells, using ECH1 antibody 11385-1-AP at 1:25 dilution and Rhodamine-labeled goat anti-rabbit IgG (red).