

For Research Use Only

Cortactin Polyclonal antibody

Catalog Number: 11381-1-AP

Featured Product

25 Publications



Basic Information

Catalog Number:

11381-1-AP

Source:

Rabbit

Isotype:

IgG

Immunogen Catalog Number:

AG1940

GenBank Accession Number:

BC008799

GeneID (NCBI):

2017

UNIPROT ID:

Q14247

Full Name:

cortactin

Calculated MW:

57 kDa

Observed MW:

70-85 kDa

Purification Method:

Antigen affinity purification

Recommended Dilutions:

WB: 1:5000-1:50000

IP: 0.5-4.0 ug for 1.0-3.0 mg of total protein lysate

IHC: 1:200-1:1000

IF/ICC: 1:200-1:800

FC (Intra): 0.25 ug per 10⁶ cells in a 100 µl suspension

Applications

Tested Applications:

WB, IHC, IF/ICC, FC (Intra), IP, ELISA

Cited Applications:

WB, IHC, IF, IP, CoIP

Species Specificity:

human, mouse, rat

Cited Species:

human, mouse, rat

Note-IHC: suggested antigen retrieval with TE buffer pH 9.0; (*) Alternatively, antigen retrieval may be performed with citrate buffer pH 6.0

Positive Controls:

WB: HEK-293 cells, A549 cells, HAP1 cells, HUVEC cells, HT-1080 cells, HeLa cells, MCF-7 cells, NIH/3T3 cells

IP: MCF-7 cells,

IHC: human breast cancer tissue, mouse colon tissue

IF/ICC: HeLa cells,

FC (Intra): HeLa cells,

Background Information

Cortactin, encoded by CTTN gene (formerly EMS1), was originally identified as a substrate of the Src kinase. It is a cytoskeletal protein that interacts with F-actin and Arp2/3 complex and plays an important role in regulation of actin assembly and cytoskeleton dynamics. Overexpression of cortactin increases cell migration, and is thought to contribute to the invasive phenotype of breast cancer and several other tumors. Three isoforms of cortactin exist due to the alternative splicing. Although cortactin has a predicted molecular weight around 65 kDa, it was detected as 80/85 doublet or as multiple bands between 75 and 85 kDa on SDS-PAGE (PMID: 18607838, 19089942).

Notable Publications

Author	Pubmed ID	Journal	Application
Chengmei Huang	34583750	J Exp Clin Cancer Res	WB
Hao Bo	30588252	J Cancer	WB
Jing Wang	36357564	Cancer Gene Ther	WB

Storage

Storage:

Store at -20°C. Stable for one year after shipment.

Storage Buffer:

PBS with 0.02% sodium azide and 50% glycerol, pH7.3

Aliquoting is unnecessary for -20°C storage

For technical support and original validation data for this product please contact:

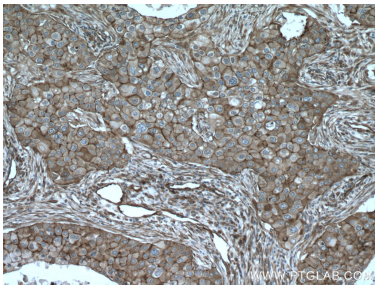
T: 4006900926

E: Proteintech-CN@ptglab.com

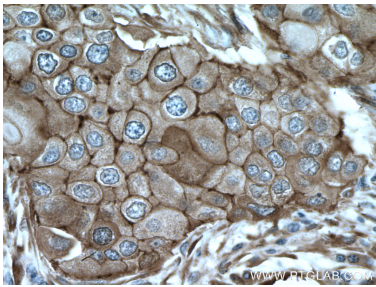
W: ptgcn.com

This product is exclusively available under Proteintech Group brand and is not available to purchase from any other manufacturer.

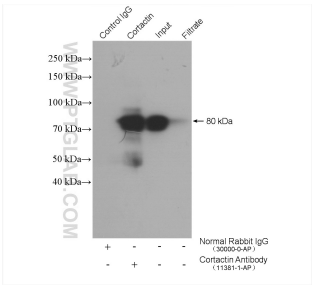
Selected Validation Data



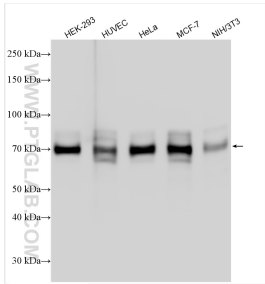
Immunohistochemical analysis of paraffin-embedded human breast cancer tissue slide using 11381-1-AP (Cortactin antibody) at dilution of 1:200 (under 10x lens). Heat mediated antigen retrieval with Tris-EDTA buffer (pH 9.0).



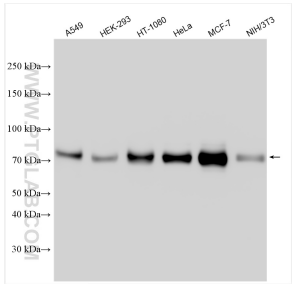
Immunohistochemical analysis of paraffin-embedded human breast cancer tissue slide using 11381-1-AP (Cortactin antibody) at dilution of 1:200 (under 40x lens). Heat mediated antigen retrieval with Tris-EDTA buffer (pH 9.0).



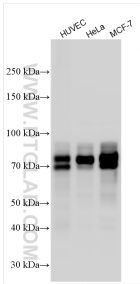
IP result of anti-Cortactin (IP:11381-1-AP, 4ug; Detection:11381-1-AP 1:1000) with MCF-7 cells lysate 2400 ug.



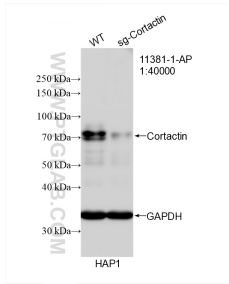
Various lysates were subjected to SDS PAGE followed by western blot with 11381-1-AP (Cortactin antibody) at dilution of 1:10000 incubated at room temperature for 1.5 hours.



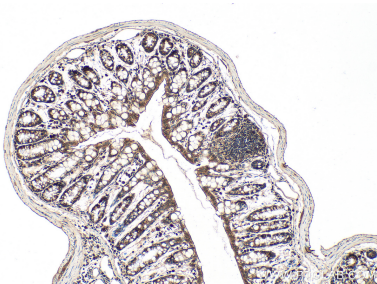
Various lysates were subjected to SDS PAGE followed by western blot with 11381-1-AP (Cortactin antibody) at dilution of 1:20000 incubated at room temperature for 1.5 hours.



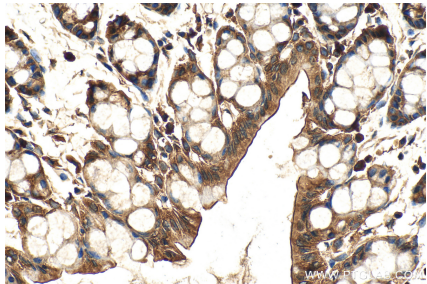
Various lysates were subjected to SDS PAGE followed by western blot with 11381-1-AP (Cortactin antibody) at dilution of 1:20000 incubated at room temperature for 1.5 hours.



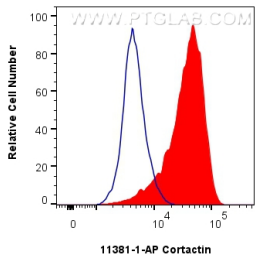
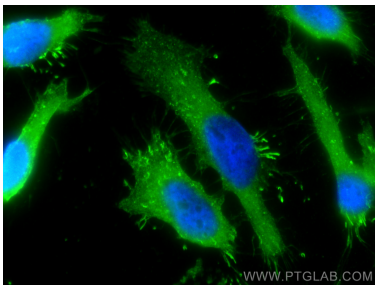
N/A



Immunohistochemical analysis of paraffin-embedded mouse colon tissue slide using 11381-1-AP (Cortactin antibody) at dilution of 1:800 (under 10x lens). Heat mediated antigen retrieval with Tris-EDTA buffer (pH 9.0).



Immunohistochemical analysis of paraffin-embedded mouse colon tissue slide using 11381-1-AP (Cortactin antibody) at dilution of 1:800 (under 40x lens). Heat mediated antigen retrieval with Tris-EDTA buffer (pH 9.0).



Immunofluorescent analysis of (-20°C Methanol) fixed HeLa cells using Cortactin antibody (11381-1-AP) at dilution of 1:400 and CoraLite®488-Conjugated AffiniPure Goat Anti-Rabbit IgG(H+L).

1x10⁶ HeLa cells were intracellularly stained with 0.25 ug Cortactin Polyclonal antibody (11381-1-AP) and CoraLite®488-Conjugated Goat Anti-Rabbit IgG(H+L) (SA00013-2)(red), or 0.25 ug rabbit IgG isotype control (blue). Cells were fixed with 4% PFA and permeabilized with Flow Cytometry Perm Buffer.