

For Research Use Only

ARHGEF5 Polyclonal antibody

Catalog Number: 11379-1-AP

4 Publications



Basic Information

Catalog Number:

11379-1-AP

Concentration:

500 ug/ml

Source:

Rabbit

Isotype:

IgG

Immunogen Catalog Number:

AG1892

GenBank Accession Number:

BC010046

GeneID (NCBI):

7984

UNIPROT ID:

Q12774

Full Name:

Rho guanine nucleotide exchange factor (GEF) 5

Calculated MW:

177 kDa

Observed MW:

60 kDa

Purification Method:

Antigen affinity purification

Recommended Dilutions:

WB 1:1000-1:4000

IP 0.5-4.0 ug for 1.0-3.0 mg of total protein lysate

IHC 1:50-1:500

IF/ICC 1:50-1:500

Applications

Tested Applications:

WB, IHC, IF/ICC, IP, ELISA

Cited Applications:

WB, IHC, IF

Species Specificity:

human, mouse, rat

Cited Species:

human, mouse, rat

Note-IHC: suggested antigen retrieval with TE buffer pH 9.0; (*) Alternatively, antigen retrieval may be performed with citrate buffer pH 6.0

Positive Controls:

WB : MCF7 cells, HEK-293 cells, HeLa cells, human kidney tissue, human liver tissue, mouse kidney tissue, mouse liver tissue, rat kidney tissue

IP : mouse kidney tissue,

IHC : human lung cancer tissue,

IF/ICC : HeLa cells,

Background Information

Notable Publications

Author	Pubmed ID	Journal	Application
Hye-Kyung Lee	26358398	Cell Biochem Funct	WB
Hye-Kyung Lee	25911094	J Biol Chem	WB, IF
Ji-Ye Kim	38932934	Front Mol Neurosci	WB

Storage

Storage:

Store at -20°C. Stable for one year after shipment.

Storage Buffer:

PBS with 0.02% sodium azide and 50% glycerol, pH7.3

Aliquoting is unnecessary for -20°C storage

For technical support and original validation data for this product please contact:

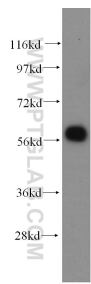
T: 4006900926

E: Proteintech-CN@ptglab.com

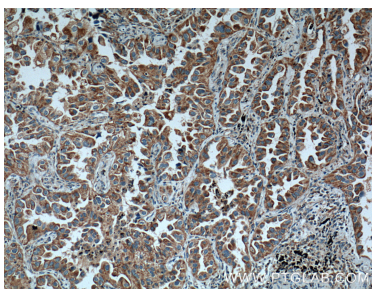
W: ptgcn.com

This product is exclusively available under Proteintech Group brand and is not available to purchase from any other manufacturer.

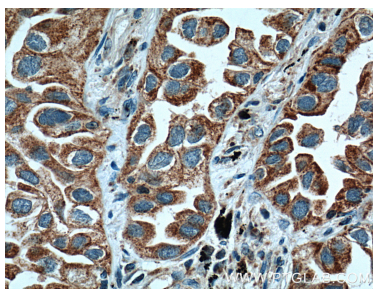
Selected Validation Data



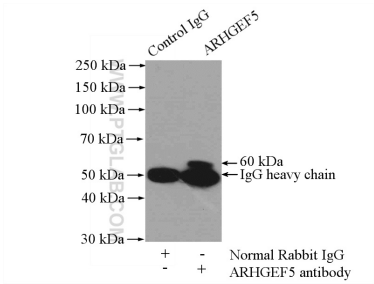
MCF7 cells were subjected to SDS PAGE followed by western blot with 11379-1-AP (ARHGEF5 antibody) at dilution of 1:500 incubated at room temperature for 1.5 hours.



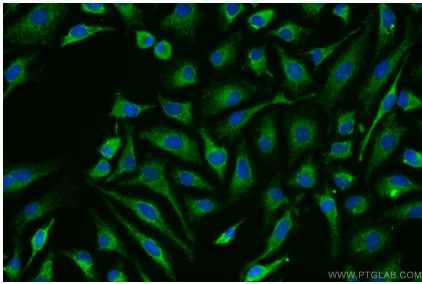
Immunohistochemical analysis of paraffin-embedded human lung cancer tissue slide using 11379-1-AP (ARHGEF5 Antibody) at dilution of 1:200 (under 10x lens). Heat mediated antigen retrieval with Tris-EDTA buffer (pH 9.0).



Immunohistochemical analysis of paraffin-embedded human lung cancer tissue slide using 11379-1-AP (ARHGEF5 Antibody) at dilution of 1:200 (under 40x lens). Heat mediated antigen retrieval with Tris-EDTA buffer (pH 9.0).



IP result of anti-ARHGEF5 (IP:11379-1-AP, 4ug; Detection:11379-1-AP 1:500) with mouse kidney tissue lysate 4000ug.



Immunofluorescent analysis of (4% PFA) fixed HeLa cells using ARHGEF5 antibody (11379-1-AP) at dilution of 1:200 and CoraLite®488-Conjugated AffiniPure Goat Anti-Rabbit IgG(H+L) (SA00013-2).