

For Research Use Only

SP100 Polyclonal antibody

Catalog Number: 11377-1-AP

4 Publications



Basic Information

Catalog Number:

11377-1-AP

Size:

700 µg/ml

Source:

Rabbit

Isotype:

IgG

Immunogen Catalog Number:

AG1939

GenBank Accession Number:

BC011562

GeneID (NCBI):

6672

UNIPROT ID:

P23497

Full Name:

SP100 nuclear antigen

Calculated MW:

879 aa, 100 kDa

Observed MW:

70-100 kDa, 110-130 kDa

Purification Method:

Antigen affinity purification

Recommended Dilutions:

WB 1:500-1:1000

IHC 1:20-1:200

Applications

Tested Applications:

WB, IHC, ELISA

Cited Applications:

WB

Species Specificity:

human

Cited Species:

human

Positive Controls:

WB : Jurkat cells,

IHC : human ovary tumor tissue,

Note-IHC: suggested antigen retrieval with TE buffer pH 9.0; (*) Alternatively, antigen retrieval may be performed with citrate buffer pH 6.0

Background Information

SP100 nuclear antigen, belongs to the nuclear bodies (NBs), has a role in the control of gene expression. It contains a HSR domain, which is important for the nuclear body targeting as well as for the dimerization, and one PxVxL motif, which if required for interaction with chromoshadow domains. Sp100 is an acidic protein that exerts a highly aberrant electrophoretic mobility in SDS-polyacrylamide gel electrophoresis.

Notable Publications

Author	Pubmed ID	Journal	Application
Alexander S Hahn	27356898	J Virol	
Philipp E Merkl	30670617	MBio	
Florian Full	24453968	PLoS Pathog	WB

Storage

Storage:

Store at -20°C. Stable for one year after shipment.

Storage Buffer:

PBS with 0.02% sodium azide and 50% glycerol pH 7.3.

Aliquoting is unnecessary for -20°C storage

For technical support and original validation data for this product please contact:

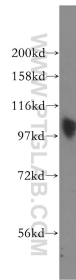
T: 4006900926

E: Proteintech-CN@ptglab.com

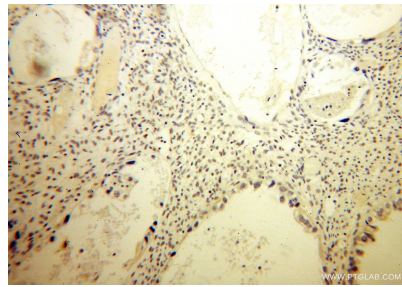
W: ptgcn.com

This product is exclusively available under Proteintech Group brand and is not available to purchase from any other manufacturer.

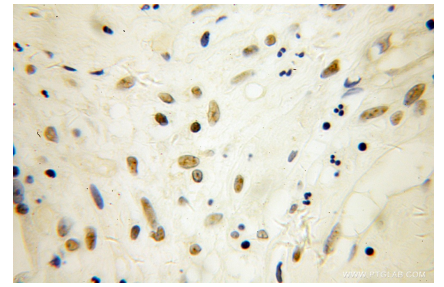
Selected Validation Data



Jurkat cells were subjected to SDS PAGE followed by western blot with 11377-1-AP (SP100 antibody) at dilution of 1:400 incubated at room temperature for 1.5 hours.



Immunohistochemical analysis of paraffin-embedded human ovary tumor using 11377-1-AP (SP100 antibody) at dilution of 1:50 (under 10x lens).



Immunohistochemical analysis of paraffin-embedded human ovary tumor using 11377-1-AP (SP100 antibody) at dilution of 1:50 (under 40x lens).