

For Research Use Only

# TLE3 Polyclonal antibody

Catalog Number: 11372-1-AP

Featured Product

21 Publications



## Basic Information

### Catalog Number:

11372-1-AP

### Size:

650 ug/ml

### Source:

Rabbit

### Isotype:

IgG

### Immunogen Catalog Number:

AG1930

### GenBank Accession Number:

BC015729

### GeneID (NCBI):

7090

### UNIPROT ID:

Q04726

### Full Name:

transducin-like enhancer of split 3  
(E(sp1) homolog, Drosophila)

### Calculated MW:

772 aa, 83 kDa

### Observed MW:

83 kDa

### Purification Method:

Antigen affinity purification

### Recommended Dilutions:

WB 1:1000-1:6000

IP 0.5-4.0 ug for 1.0-3.0 mg of total  
protein lysate

IHC 1:50-1:500

IF/ICC 1:200-1:800

## Applications

### Tested Applications:

WB, IHC, IF/ICC, IP, ELISA

### Cited Applications:

WB, IHC, IF, CoIP, ChIP

### Species Specificity:

human, mouse, rat

### Cited Species:

human, mouse

**Note-IHC: suggested antigen retrieval with  
TE buffer pH 9.0; (\*) Alternatively, antigen  
retrieval may be performed with citrate  
buffer pH 6.0**

### Positive Controls:

WB : HeLa cells, HEK-293 cells

IP : HepG2 cells,

IHC : human breast cancer tissue,

IF/ICC : HepG2 cells,

## Background Information

TLE3, also named as KIAA1547 and ESG3, belongs to the WD repeat Groucho/TLE family. It is a transcriptional corepressor that binds to a number of transcription factors. It inhibits the transcriptional activation mediated by CTNNB1 and TCF family members in Wnt signaling. The effects of full-length TLE family members may be modulated by association with dominant-negative AES. TLE3 is a member of the transducin-like enhancer of split (TLE) family of proteins that have been implicated in the tumorigenesis and classification of sarcomas. It is a candidate biomarker of response to taxane

## Notable Publications

Author	Pubmed ID	Journal	Application
Mohsan Saeed	32997711	PLoS Pathog	WB
Francisco José Ortega	25249007	J Mol Med (Berl)	WB
Ying Ren	31645658	Acta Pharmacol Sin	WB

## Storage

### Storage:

Store at -20°C. Stable for one year after shipment.

### Storage Buffer:

PBS with 0.02% sodium azide and 50% glycerol pH 7.3.

Aliquoting is unnecessary for -20°C storage

For technical support and original validation data for this product please contact:

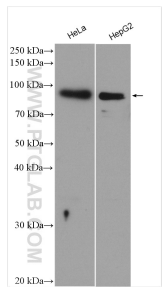
T: 4006900926

E: [Proteintech-CN@ptglab.com](mailto:Proteintech-CN@ptglab.com)

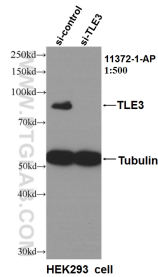
W: [ptgcn.com](http://ptgcn.com)

**This product is exclusively available under Proteintech Group brand and is not available to purchase from any other manufacturer.**

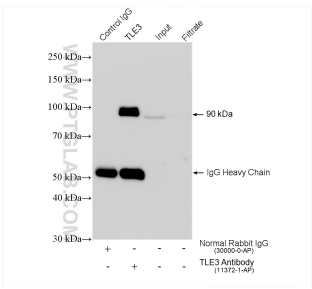
Selected Validation Data



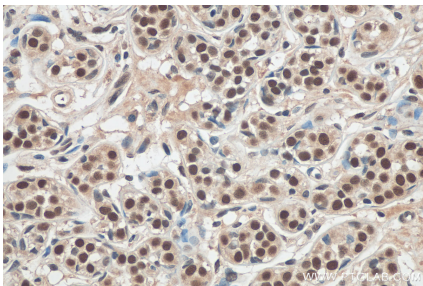
HeLa cells were subjected to SDS PAGE followed by western blot with 11372-1-AP (TLE3 antibody) at dilution of 1:3000 incubated at room temperature for 1.5 hours.



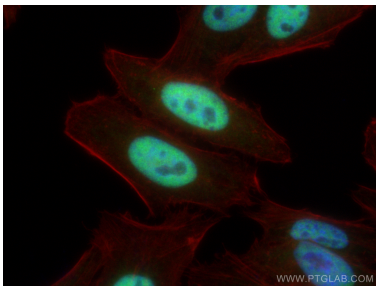
WB result of TLE3 antibody (11372-1-AP, 1:500) with si-Control and si-TLE3 transfected HEK293 cells.



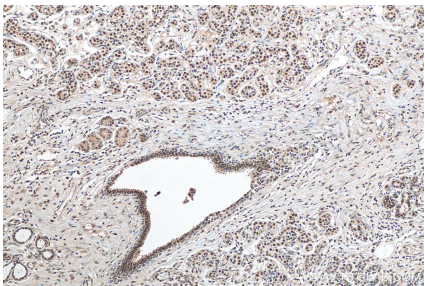
IP result of anti-TLE3 (IP:11372-1-AP, 4ug; Detection:11372-1-AP 1:2000) with HepG2 cells lysate 1080 ug.



Immunohistochemical analysis of paraffin-embedded human breast cancer tissue slide using 11372-1-AP (TLE3 antibody) at dilution of 1:200 (under 40x lens). Heat mediated antigen retrieval with Tris-EDTA buffer (pH 9.0).



Immunofluorescent analysis of (4% PFA) fixed HepG2 cells using TLE3 antibody (11372-1-AP) at dilution of 1:400 and CoraLite®488-Conjugated AffiniPure Goat Anti-Rabbit IgG(H+L), CL594-phalloidin (red).



Immunohistochemical analysis of paraffin-embedded human breast cancer tissue slide using 11372-1-AP (TLE3 antibody) at dilution of 1:200 (under 10x lens). Heat mediated antigen retrieval with Tris-EDTA buffer (pH 9.0).