

For Research Use Only

TIN2 Polyclonal antibody

Catalog Number: 11368-1-AP

5 Publications



Basic Information

Catalog Number:

11368-1-AP

Concentration:

800 µg/ml

Source:

Rabbit

Isotype:

IgG

Immunogen Catalog Number:

AG1922

GenBank Accession Number:

BC005030

GeneID (NCBI):

26277

UNIPROT ID:

Q9BSI4

Full Name:

TERF1 (TRF1)-interacting nuclear factor 2

Calculated MW:

451 aa, 50 kDa

Observed MW:

50 kDa, 40 kDa

Purification Method:

Antigen affinity purification

Recommended Dilutions:

WB 1:500-1:1000

IF/ICC 1:10-1:100

Applications

Tested Applications:

WB, IF/ICC, ELISA

Cited Applications:

WB, chip

Species Specificity:

human, mouse

Cited Species:

human

Positive Controls:

WB : mouse spleen tissue,

IF/ICC : HepG2 cells,

Background Information

TIN2, also named as TINF2, is a component of the shelterin complex (telosome) that is involved in the regulation of telomere length and protection. TIN2 has some isoforms with MW 50 kDa (TIN2L), 40 kDa (TIN2S) and 13 kDa. This antibody detects TIN2L, TIN2S and the shelterin complex.

Notable Publications

Author	Pubmed ID	Journal	Application
Orit Uziel	26515461	Oncotarget	chip
Tomer Harpaz	30326633	Cells	
Fang Li	39765136	Tissue Cell	WB

Storage

Storage:

Store at -20°C. Stable for one year after shipment.

Storage Buffer:

PBS with 0.02% sodium azide and 50% glycerol pH 7.3.

Aliquoting is unnecessary for -20°C storage

For technical support and original validation data for this product please contact:

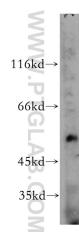
T: 4006900926

E: Proteintech-CN@ptglab.com

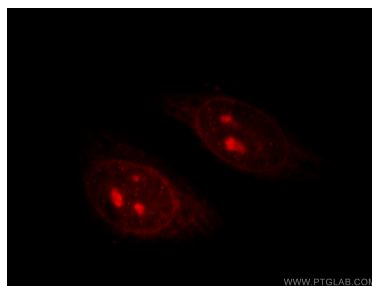
W: ptgcn.com

This product is exclusively available under Proteintech Group brand and is not available to purchase from any other manufacturer.

Selected Validation Data



mouse spleen tissue were subjected to SDS PAGE followed by western blot with 11368-1-AP (TIN2 antibody) at dilution of 1:200 incubated at room temperature for 1.5 hours.



Immunofluorescent analysis of HepG2 cells, using TINF2 antibody 11368-1-AP at 1:25 dilution and Rhodamine-labeled goat anti-rabbit IgG (red).