

For Research Use Only

RYBP Polyclonal antibody

Catalog Number: 11365-1-AP

2 Publications



Basic Information

Catalog Number:

11365-1-AP

Source:

Rabbit

Isotype:

IgG

Immunogen Catalog Number:

AG1908

GenBank Accession Number:

BC014959

GeneID (NCBI):

23429

UNIPROT ID:

Q8N488

Full Name:

RING1 and YY1 binding protein

Calculated MW:

228 aa, 25 kDa

Observed MW:

32 kDa

Purification Method:

Antigen affinity purification

Recommended Dilutions:

WB: 1:500-1:1000

IP: 0.5-4.0 ug for 1.0-3.0 mg of total protein lysate

Applications

Tested Applications:

WB, IP, ELISA

Cited Applications:

WB

Species Specificity:

human, mouse, rat

Cited Species:

human

Positive Controls:

WB : K-562 cells,

IP : mouse spleen tissue,

Background Information

Polycomb repressive complexes (PRCs) are important chromatin regulators of embryonic stem (ES) cell function [PMID:22269950]. RYBP binds Polycomb H2A monoubiquitin ligases Ring1A and Ring1B and has been suggested to assist PRC localization to their targets. RYBP, firstly identified as a direct interactor with Ring1A, acts as transcriptional repressor in reporter assays, both in tissue culture cells and in the fly [PMID:16125914]

Notable Publications

Author	Pubmed ID	Journal	Application
Xianchun Lan	35933409	Nat Commun	WB
Jacob Gordon	40712028	Sci Adv	WB

Storage

Storage:

Store at -20°C. Stable for one year after shipment.

Storage Buffer:

PBS with 0.02% sodium azide and 50% glycerol, pH7.3

Aliquoting is unnecessary for -20°C storage

For technical support and original validation data for this product please contact:

T: 4006900926

E: Proteintech-CN@ptglab.com

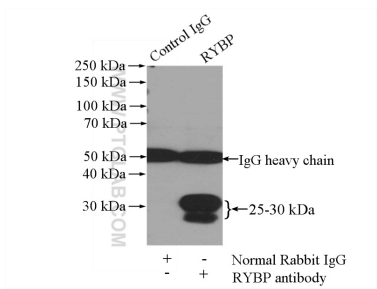
W: ptgcn.com

This product is exclusively available under Proteintech Group brand and is not available to purchase from any other manufacturer.

Selected Validation Data



K-562 cells were subjected to SDS PAGE followed by western blot with 11365-1-AP (RYBP antibody) at dilution of 1:500 incubated at room temperature for 1.5 hours.



IP result of anti-RYBP (IP:11365-1-AP, 4ug; Detection:11365-1-AP 1:300) with mouse spleen tissue lysate 4000ug.