

# EIF3E Polyclonal antibody

Catalog Number: 11352-1-AP

## Basic Information

**Catalog Number:**

11352-1-AP

**Size:**

300 µg/ml

**Source:**

Rabbit

**Isotype:**

IgG

**Immunogen Catalog Number:**

AG1856

**GenBank Accession Number:**

BC000734

**GeneID (NCBI):**

3646

**UNIPROT ID:**

P60228

**Full Name:**

eukaryotic translation initiation factor 3, subunit E

**Calculated MW:**

48 kDa

**Observed MW:**

48-52 kDa

**Purification Method:**

Antigen affinity purification

**Recommended Dilutions:**

WB 1:500-1:2400

IP 0.5-4.0 µg for 1.0-3.0 mg of total protein lysate

IHC 1:50-1:500

IF/ICC 1:10-1:100

## Applications

**Tested Applications:**

WB, IHC, IF/ICC, IP, ELISA

**Species Specificity:**

human, mouse, rat

**Note-IHC: suggested antigen retrieval with TE buffer pH 9.0; (\*) Alternatively, antigen retrieval may be performed with citrate buffer pH 6.0**

**Positive Controls:**

**WB :** HeLa cells, HEK-293 cells, HepG2 cells, Jurkat cells

**IP :** HepG2 cells,

**IHC :** human breast cancer tissue,

**IF/ICC :** HepG2 cells,

## Background Information

### Storage

**Storage:**

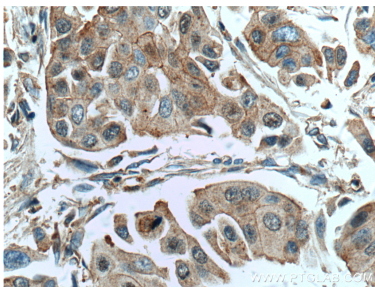
Store at -20°C. Stable for one year after shipment.

**Storage Buffer:**

PBS with 0.02% sodium azide and 50% glycerol pH 7.3.

Aliquoting is unnecessary for -20°C storage

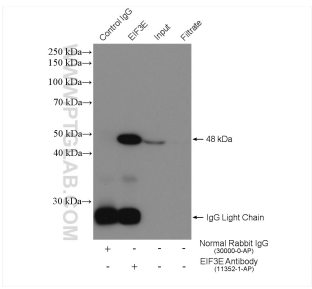
Selected Validation Data



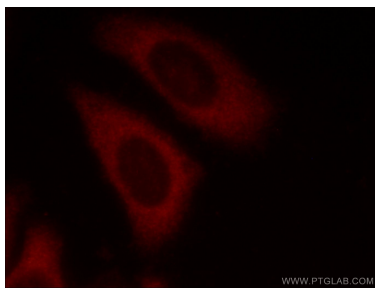
Immunohistochemical analysis of paraffin-embedded human breast cancer tissue slide using 11352-1-AP (EIF3E antibody) at dilution of 1:200 (under 40x lens. Heat mediated antigen retrieval with Tris-EDTA buffer (pH 9.0)).



HeLa cells were subjected to SDS PAGE followed by western blot with 11352-1-AP (EIF3E antibody) at dilution of 1:500 incubated at room temperature for 1.5 hours.



IP result of anti-EIF3E (IP:11352-1-AP, 4ug; Detection:11352-1-AP 1:500) with HepG2 cells lysate 880 ug.



Immunofluorescent analysis of HepG2 cells using 11352-1-AP (EIF3E antibody) at dilution of 1:25 and Rhodamine-Goat anti-Rabbit IgG.