

For Research Use Only

IRF1 Polyclonal antibody

Catalog Number: 11335-1-AP

Featured Product

44 Publications



Basic Information

Catalog Number:

11335-1-AP

Concentration:

900 ug/ml

Source:

Rabbit

Isotype:

IgG

Immunogen Catalog Number:

AG1879

GenBank Accession Number:

BC009483

GeneID (NCBI):

3659

UNIPROT ID:

P10914

Full Name:

IRF 1

Calculated MW:

325 aa, 37 kDa

Observed MW:

45-50 kDa

Purification Method:

Antigen affinity purification

Recommended Dilutions:

WB 1:500-1:1000

IHC 1:20-1:200

IF/ICC 1:50-1:500

Applications

Tested Applications:

WB, IHC, IF/ICC, FC (Intra), ELISA

Cited Applications:

WB, IHC, IF, IP, CoIP, ChIP

Species Specificity:

human

Cited Species:

human, mouse, rat, pig, monkey

Note-IHC: suggested antigen retrieval with TE buffer pH 9.0; (*) Alternatively, antigen retrieval may be performed with citrate buffer pH 6.0

Positive Controls:

WB: IFN gamma treated HeLa cells, HL-60 cells, IFN gamma treated THP-1 cells

IHC: human breast cancer tissue,

IF/ICC: IFN gamma treated HepG2 cells,

Background Information

IRF1, also named as IFN regulatory factor 1, is a 325 amino acid protein, which belongs to the IRF family. IRF1 as a transcriptional regulator which displays a remarkable functional diversity in the regulation of cellular responses. The calculated molecular weight of IRF1 is 37 kDa, but the modified IRF1 protein is about 45-50 kDa.

Notable Publications

Author	Pubmed ID	Journal	Application
Bin Zhang	32964498	Neurochem Res	WB
Hironori Bando	30283439	Front Immunol	WB
Shilong Zhang	33013386	Front Pharmacol	WB

Storage

Storage:

Store at -20°C. Stable for one year after shipment.

Storage Buffer:

PBS with 0.02% sodium azide and 50% glycerol pH 7.3.

Aliquoting is unnecessary for -20°C storage

For technical support and original validation data for this product please contact:

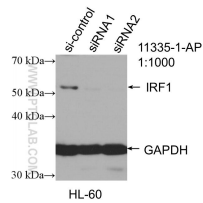
T: 4006900926

E: Proteintech-CN@ptglab.com

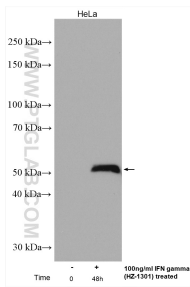
W: ptgcn.com

This product is exclusively available under Proteintech Group brand and is not available to purchase from any other manufacturer.

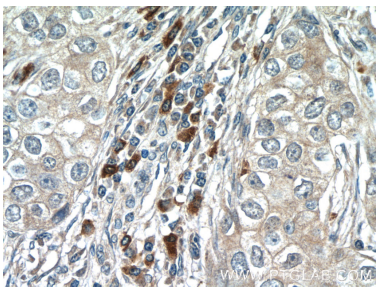
Selected Validation Data



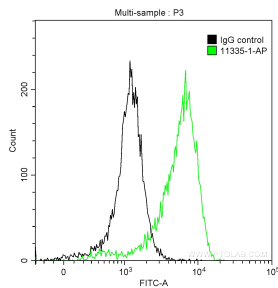
WB result of IRF1 antibody (11335-1-AP; 1:1000; incubated at room temperature for 1.5 hours) with sh-Control and sh-IRF 1 transfected HL-60 cells.



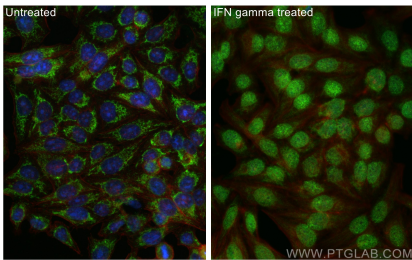
Western blot analysis of HeLa cells, untreated or treated with Human IFN- γ (hIFN- γ) (HZ-1301) (100 ng/ml, 48 hr), using 11335-1-AP (IRF1 antibody) at dilution of 1:600 incubated at room temperature for 1.5 hours.



Immunohistochemical analysis of paraffin-embedded human breast cancer tissue slide using 11335-1-AP (IRF1 Antibody) at dilution of 1:50 (under 40x lens).



1X10⁶ Jurkat cells were intracellularly stained with 0.5 ug Anti-Human IRF 1 (11335-1-AP) and CoraLite®488-Conjugated AffiniPure Goat Anti-Rabbit IgG(H+L) at dilution 1:1000 (green), and 0.5 ug Control Antibody. Cells were fixed with 4% PFA and permeabilized with 0.1% TritonX-100.



Immunofluorescent analysis of (-20°C Ethanol) fixed IFN gamma treated HepG2 cells using IRF1 antibody (11335-1-AP) at dilution of 1:200 and CoraLite®488-Conjugated Goat Anti-Rabbit IgG(H+L) (SA00013-2), CL594-Phalloidin (red).