

For Research Use Only

EIF2B4 Polyclonal antibody

Catalog Number: 11332-1-AP

Featured Product

9 Publications



Basic Information

Catalog Number:

11332-1-AP

Size:

650 µg/ml

Source:

Rabbit

Isotype:

IgG

Immunogen Catalog Number:

AG1875

GenBank Accession Number:

BC001870

GeneID (NCBI):

8890

UNIPROT ID:

Q9UI10

Full Name:

eukaryotic translation initiation factor 2B, subunit 4 delta, 67kDa

Calculated MW:

523 aa, 58 kDa

Observed MW:

58 kDa

Purification Method:

Antigen affinity purification

Recommended Dilutions:

WB 1:500-1:1000

IHC 1:20-1:200

IF/ICC 1:50-1:500

Applications

Tested Applications:

WB, IHC, IF/ICC, ELISA

Cited Applications:

WB

Species Specificity:

human, mouse

Cited Species:

human, mouse

Note-IHC: suggested antigen retrieval with TE buffer pH 9.0; (*) Alternatively, antigen retrieval may be performed with citrate buffer pH 6.0

Positive Controls:

WB : MCF-7 cells, K-562 cells, HeLa cells, HL-60 cells, mouse skeletal muscle tissue

IHC : human breast cancer tissue, human testis tissue

IF/ICC : MCF-7 cells,

Background Information

Notable Publications

Author	Pubmed ID	Journal	Application
Yusuke Sekine	27812215	PLoS One	WB
Michael Schoof	33688831	Elife	WB
Noel C Wortham	26614765	Biochem J	WB

Storage

Storage:

Store at -20°C. Stable for one year after shipment.

Storage Buffer:

PBS with 0.02% sodium azide and 50% glycerol pH 7.3.

Aliquoting is unnecessary for -20°C storage

For technical support and original validation data for this product please contact:

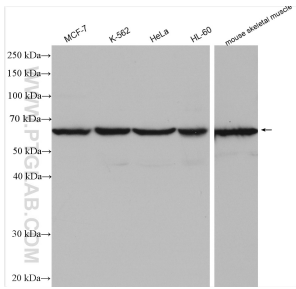
T: 4006900926

E: Proteintech-CN@ptglab.com

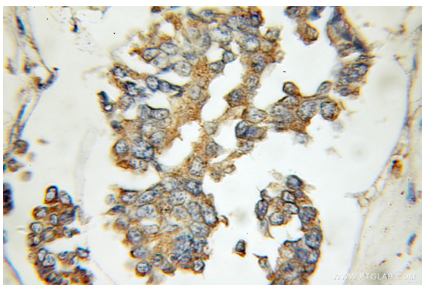
W: ptgcn.com

This product is exclusively available under Proteintech Group brand and is not available to purchase from any other manufacturer.

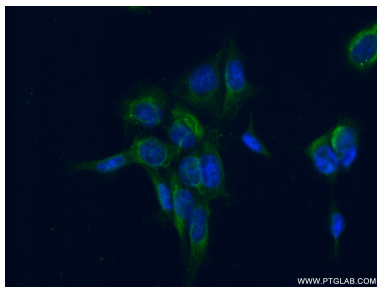
Selected Validation Data



Various lysates were subjected to SDS PAGE followed by western blot with 11332-1-AP (EIF2B4 antibody) at dilution of 1:600 incubated at room temperature for 1.5 hours.



Immunohistochemical analysis of paraffin-embedded human breast cancer using 11332-1-AP (EIF2B4 antibody) at dilution of 1:100 (under 10x lens).



Immunofluorescent analysis of (-20℃ Ethanol) fixed MCF-7 cells using 11332-1-AP (EIF2B4 antibody) at dilution of 1:50 and Alexa Fluor 488-conjugated AffiniPure Goat Anti-Rabbit IgG(H+L).