

For Research Use Only

DNASE1L3 Polyclonal antibody

Catalog Number: 11330-1-AP



Basic Information

| | | |
|--|---|--|
| Catalog Number: 11330-1-AP | GenBank Accession Number: BC015831 | Purification Method: Antigen affinity purification |
| Size: 400 µg/ml | GeneID (NCBI): 1776 | Recommended Dilutions: WB 1:200-1:600 |
| Source: Rabbit | UNIPROT ID: Q13609 | |
| Isotype: IgG | Full Name: deoxyribonuclease I-like 3 | |
| Immunogen Catalog Number: AG1873 | Calculated MW: 305 aa, 36 kDa | |
| | Observed MW: 33-38 kDa | |

Applications

| | |
|--|---|
| Tested Applications: WB, ELISA | Positive Controls: WB : HEK-293 cells, Raji cells |
| Species Specificity: human | |

Background Information

Deoxyribonuclease 1-like 3 (DNASE1L3, DNase gamma, DNase Y, LS-DNase) is member of a DNASE1 protein family that is identified by similar biochemical properties such as Ca²⁺/Mg²⁺ dependency and an optimal pH of about 7.0 as well as by a high similarity in their nucleic acid and amino acid sequences [PMID:15796714]. It is an endonuclease and cleaves double-stranded DNA (and single-stranded DNA) producing 3'-OH/5'-P ends, which is Ca²⁺/Mg²⁺-dependent and inhibited by Zn²⁺, but not by monomeric actin [PMID:9665719]. In addition, it has been suggested to be involved in apoptotic DNA fragmentation of thymocytes neuronal PC12 cells, C2C12 myoblasts and of cell lines expressing the recombinant nuclease [PMID: 7957253, 9307016]

Storage

Storage:
Store at -20°C. Stable for one year after shipment.
Storage Buffer:
PBS with 0.02% sodium azide and 50% glycerol pH 7.3.
Aliquoting is unnecessary for -20°C storage

For technical support and original validation data for this product please contact:

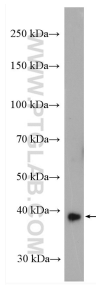
T: 4006900926

E: Proteintech-CN@ptglab.com

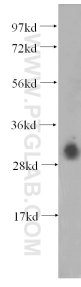
W: ptgcn.com

This product is exclusively available under Proteintech Group brand and is not available to purchase from any other manufacturer.

Selected Validation Data



Raji cells were subjected to SDS PAGE followed by western blot with 11330-1-AP (DNASE1L3 antibody) at dilution of 1:600 incubated at room temperature for 1.5 hours.



HEK-293 cells were subjected to SDS PAGE followed by western blot with 11330-1-AP (DNASE1L3 antibody) at dilution of 1:600 incubated at room temperature for 1.5 hours.