

For Research Use Only

LPXN Polyclonal antibody, PBS Only

Catalog Number: 11307-1-PBS

Featured Product



Basic Information

Catalog Number:

11307-1-PBS

Source:

Rabbit

Isotype:

IgG

Immunogen Catalog Number:

AG1845

GenBank Accession Number:

BC019035

GeneID (NCBI):

9404

UNIPROT ID:

O60711

Full Name:

leupaxin

Calculated MW:

43 kDa

Observed MW:

45 kDa

Purification Method:

Antigen affinity purification

Applications

Tested Applications:

WB, IHC, IF/ICC, IP, Indirect ELISA

Species Specificity:

human

Background Information

LPXN, also known as Leupaxin, LDPL, belongs to the paxillin family. LPXN contributes to the regulation of cell adhesion, spreading, and cell migration and acts as a negative regulator in integrin-mediated cell adhesion events (PMID: 20543562). LPXN has four leucine-rich LD-motifs in the N-terminus and four LIM domains in the C-terminus. It may function in cell type-specific signaling by associating with PYK2, a member of the focal adhesion kinase family (PMID: 9565592). Studies in breast cancer implicate LPXN is involved in the regulation of ER action as a co-factor (PMID: 25955236). LPXN is expressed in prostate cancer cells and its expression intensity is directly linked to PCa progression (PMID: 18451096).

Storage

Storage:

Store at -80°C.

The product is shipped with ice packs. Upon receipt, store it immediately at -80°C

Storage Buffer:

PBS only, pH7.3

For technical support and original validation data for this product please contact:

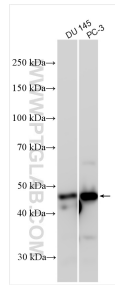
T: 4006900926

E: Proteintech-CN@ptglab.com

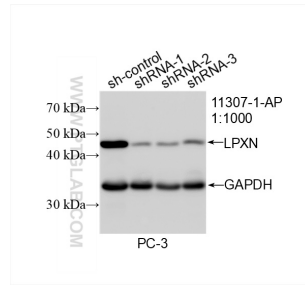
W: ptgcn.com

This product is exclusively available under Proteintech Group brand and is not available to purchase from any other manufacturer.

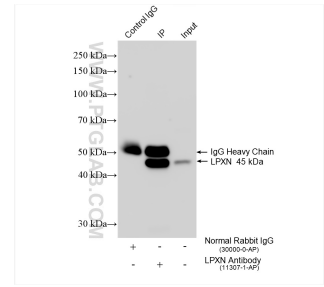
Selected Validation Data



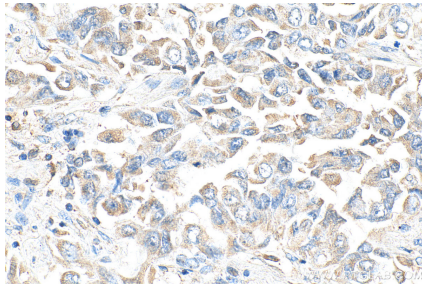
Various lysates were subjected to SDS PAGE followed by western blot with 11307-1-AP (LPXN antibody) at dilution of 1:5000 incubated at room temperature for 1.5 hours. This data was developed using the same antibody clone with 11307-1-PBS in a different storage buffer formulation.



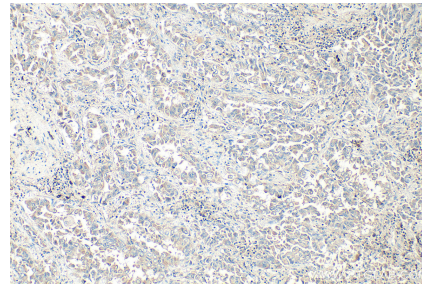
WB result of LPXN antibody (11307-1-AP; 1:1000; incubated at room temperature for 1.5 hours) with sh-Control and sh-LPXN transfected PC-3 cells. This data was developed using the same antibody clone with 11307-1-PBS in a different storage buffer formulation.



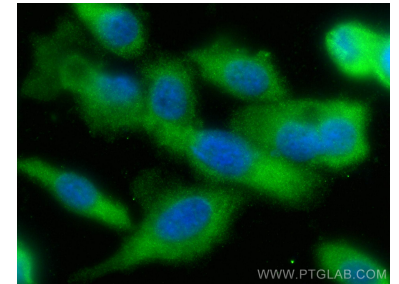
IP result of anti-LPXN (IP:11307-1-AP, 4ug; Detection:11307-1-AP 1:5000) with PC-3 cells lysate 1575 ug. This data was developed using the same antibody clone with 11307-1-PBS in a different storage buffer formulation.



Immunohistochemical analysis of paraffin-embedded human lung cancer tissue slide using 11307-1-AP (LPXN antibody) at dilution of 1:800 (under 40x lens). Heat mediated antigen retrieval with Tris-EDTA buffer (pH 9.0). This data was developed using the same antibody clone with 11307-1-PBS in a different storage buffer formulation.



Immunohistochemical analysis of paraffin-embedded human lung cancer tissue slide using 11307-1-AP (LPXN antibody) at dilution of 1:800 (under 10x lens). Heat mediated antigen retrieval with Tris-EDTA buffer (pH 9.0). This data was developed using the same antibody clone with 11307-1-PBS in a different storage buffer formulation.



Immunofluorescent analysis of (-20°C Ethanol) fixed PC-3 cells using LPXN antibody (11307-1-AP) at dilution of 1:400 and Multi-rAb CoraLite® Plus 488-Goat Anti-Rabbit Recombinant Secondary Antibody (H+L) (RGAR002). This data was developed using the same antibody clone with 11307-1-PBS in a different storage buffer formulation.