

For Research Use Only

SERPINE2 Polyclonal antibody

Catalog Number: 11303-1-AP

Featured Product

9 Publications



Basic Information

Catalog Number:

11303-1-AP

Size:

450 µg/ml

Source:

Rabbit

Isotype:

IgG

Immunogen Catalog Number:

AG1830

GenBank Accession Number:

BC015663

GeneID (NCBI):

5270

UNIPROT ID:

P07093

Full Name:

serpin peptidase inhibitor, clade E (nexin, plasminogen activator inhibitor type 1), member 2

Calculated MW:

44 kDa

Observed MW:

44-50 kDa

Purification Method:

Antigen affinity purification

Recommended Dilutions:

WB 1:500-1:1000

IP 0.5-4.0 µg for 1.0-3.0 mg of total protein lysate

IHC 1:20-1:200

IF 1:50-1:500

Applications

Tested Applications:

IF/ICC, IF-P, IHC, IP, WB, ELISA

Cited Applications:

WB, IP, IF, IHC

Species Specificity:

human, mouse, rat

Cited Species:

human, rat, mouse

Note-IHC: suggested antigen retrieval with TE buffer pH 9.0; (*) Alternatively, antigen retrieval may be performed with citrate buffer pH 6.0

Positive Controls:

WB: C6 cells, A549 cells, MCF-7 cells, rat brain tissue, rat heart tissue

IP: A549 cells,

IHC: human testis tissue, human pancreas cancer tissue

IF: human testis tissue, A549 cells, mouse testis tissue

Background Information

SERPINE2 also called protease nexin-1 or glial-derived neurite promoting factor, is a member of the serine protease inhibitor (SERPIN) superfamily. It would be a potent inhibitor of the urokinase-plasminogen activator (uPA), tissue-type PA (tPA), thrombin, trypsin, factor Xia, and prostasin. SERPINE2 is widely expressed in various tissues, including endothelial cells, fibroblasts, smooth muscle cells, tumor cells, glial cells, neurons, and placental cells.

Notable Publications

Author	Pubmed ID	Journal	Application
Wei Cai	36170234	Autophagy	IP
Jingjing Zhang	34648881	Cancer Lett	WB, IHC, IP
Mary Ann Stepp	30446696	Sci Rep	IF

Storage

Storage:

Store at -20°C. Stable for one year after shipment.

Storage Buffer:

PBS with 0.02% sodium azide and 50% glycerol pH 7.3.

Aliquoting is unnecessary for -20°C storage

For technical support and original validation data for this product please contact:

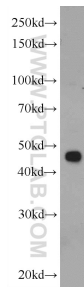
T: 4006900926

E: Proteintech-CN@ptglab.com

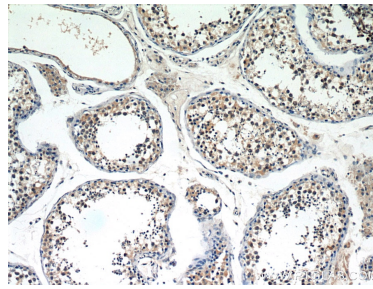
W: ptgcn.com

This product is exclusively available under Proteintech Group brand and is not available to purchase from any other manufacturer.

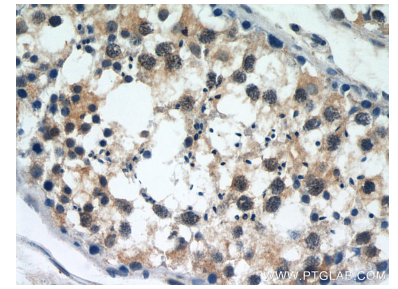
Selected Validation Data



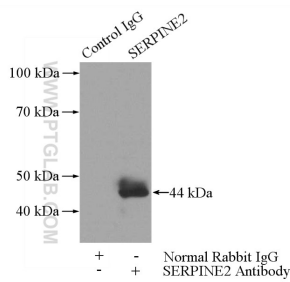
C6 cells were subjected to SDS PAGE followed by western blot with 11303-1-AP (SERPINE2 Antibody) at dilution of 1:600 incubated at room temperature for 1.5 hours.



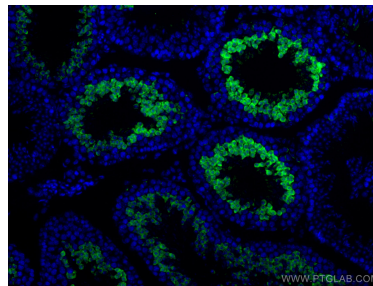
Immunohistochemical analysis of paraffin-embedded human testis slide using 11303-1-AP (SERPINE2 Antibody) at dilution of 1:50.



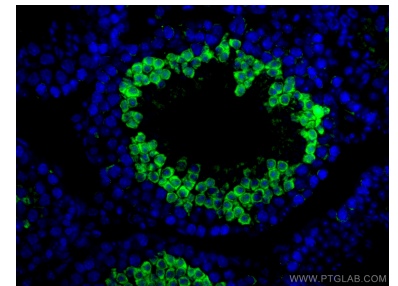
Immunohistochemical analysis of paraffin-embedded human testis slide using 11303-1-AP (SERPINE2 Antibody) at dilution of 1:50.



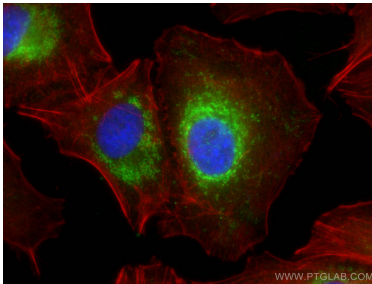
IP result of anti-SERPINE2 (IP:11303-1-AP, 3 μ g; Detection:11303-1-AP 1:300) with A549 cells lysate 2800 μ g.



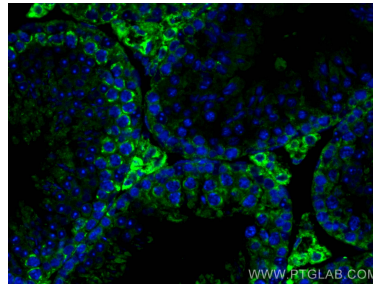
Immunofluorescent analysis of (4% PFA) fixed human testis tissue using SERPINE2 antibody (11303-1-AP) at dilution of 1:200 and CoraLite@488-Conjugated AffiniPure Goat Anti-Rabbit IgG(H+L).



Immunofluorescent analysis of (4% PFA) fixed human testis tissue using SERPINE2 antibody (11303-1-AP) at dilution of 1:200 and CoraLite@488-Conjugated AffiniPure Goat Anti-Rabbit IgG(H+L).



Immunofluorescent analysis of (4% PFA) fixed A549 cells using SERPINE2 antibody (11303-1-AP) at dilution of 1:400 and CoraLite@488-Conjugated AffiniPure Goat Anti-Rabbit IgG(H+L), CL594-Phalloidin (red).



Immunofluorescent analysis of (4% PFA) fixed mouse testis tissue using SERPINE2 antibody (11303-1-AP) at dilution of 1:200 and CoraLite@488-Conjugated AffiniPure Goat Anti-Rabbit IgG(H+L).